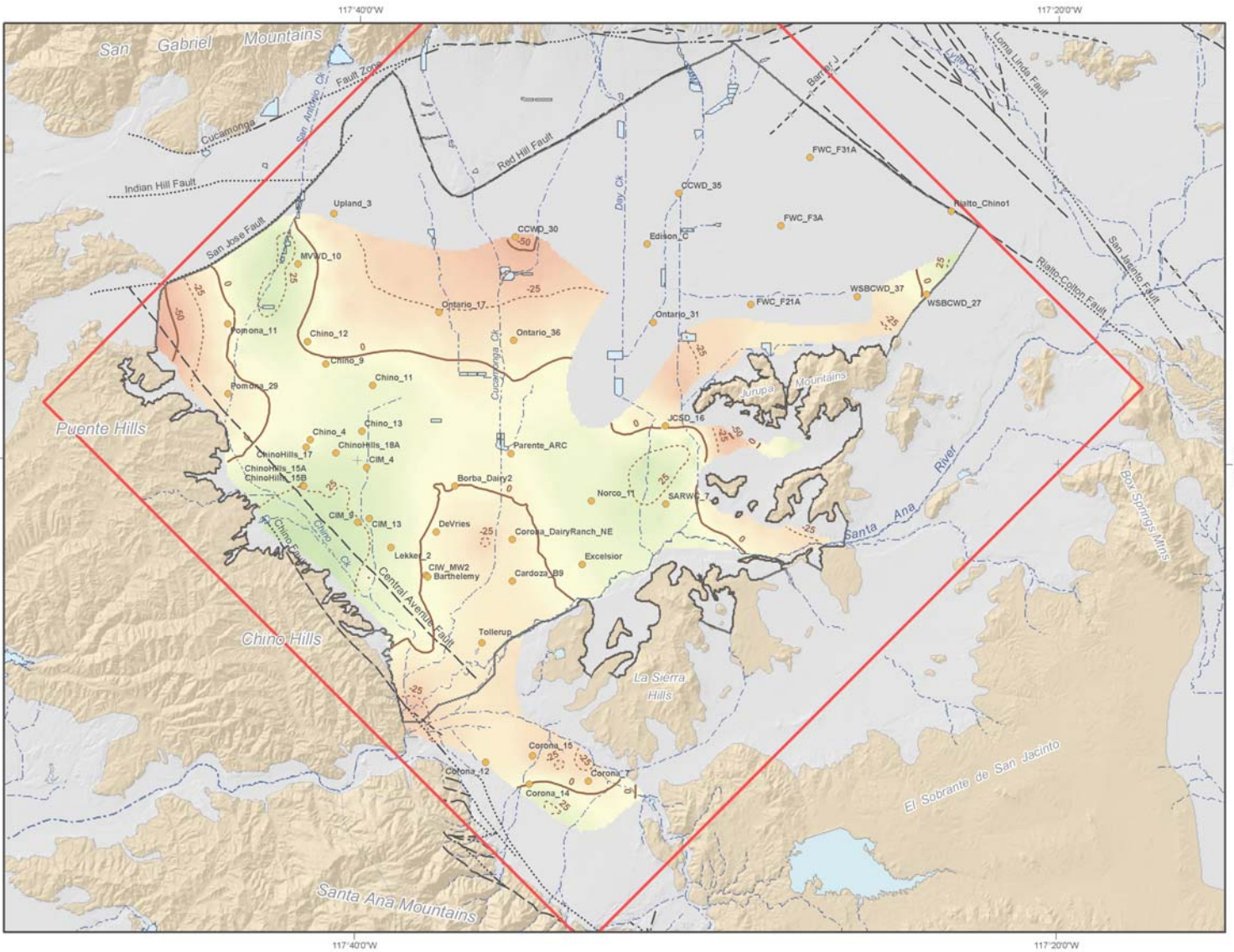




# OPTIMUM BASIN MANAGEMENT PROGRAM

## Chino Basin Dry-Year Yield Program Modeling Report

### Volume III



Prepared for:

**Chino Basin Watermaster & Inland Empire Utilities Agency**

under a Subcontract Agreement with:

**Black & Veatch Corp.**

Prepared by:

**WE WILDERMUTH ENVIRONMENTAL, INC.**

23692 Birtcher Drive  
Lake Forest, CA 92630  
949.420.3030