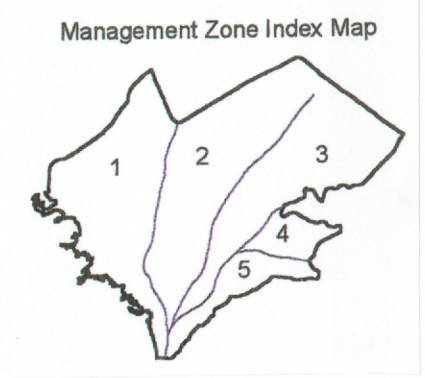
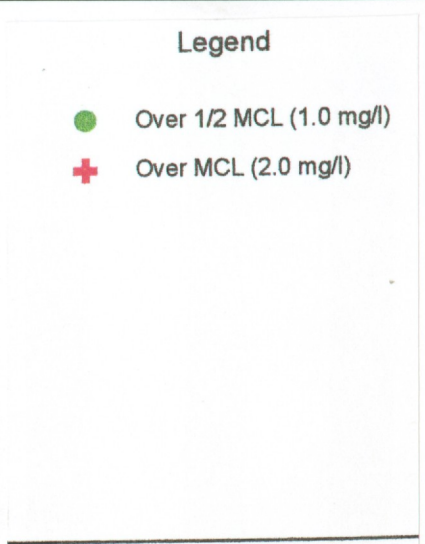
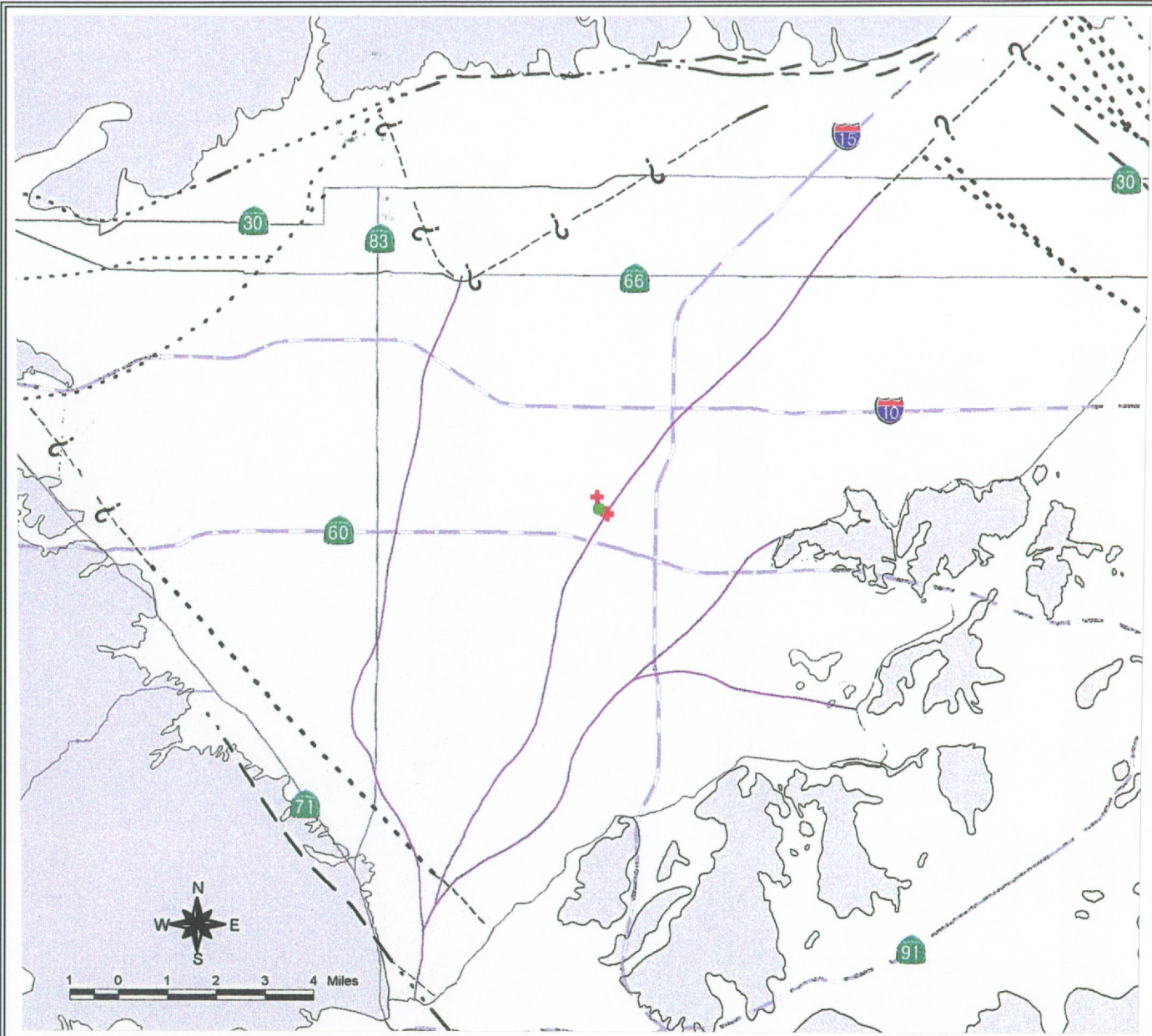


4-369



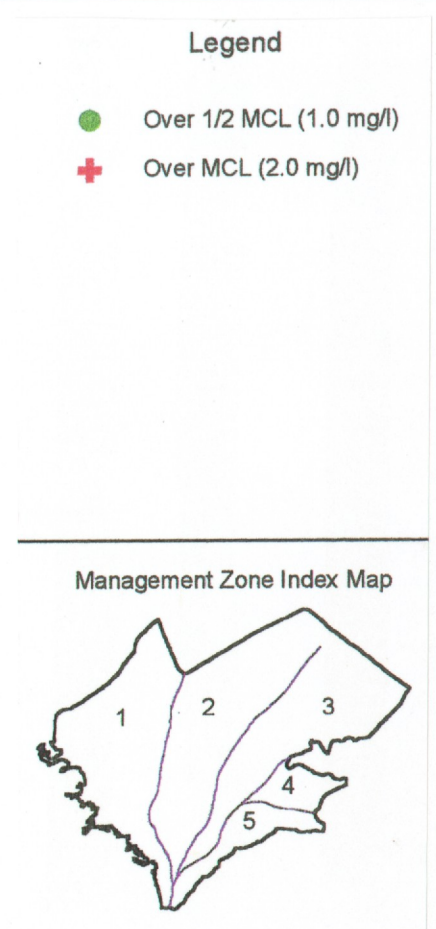
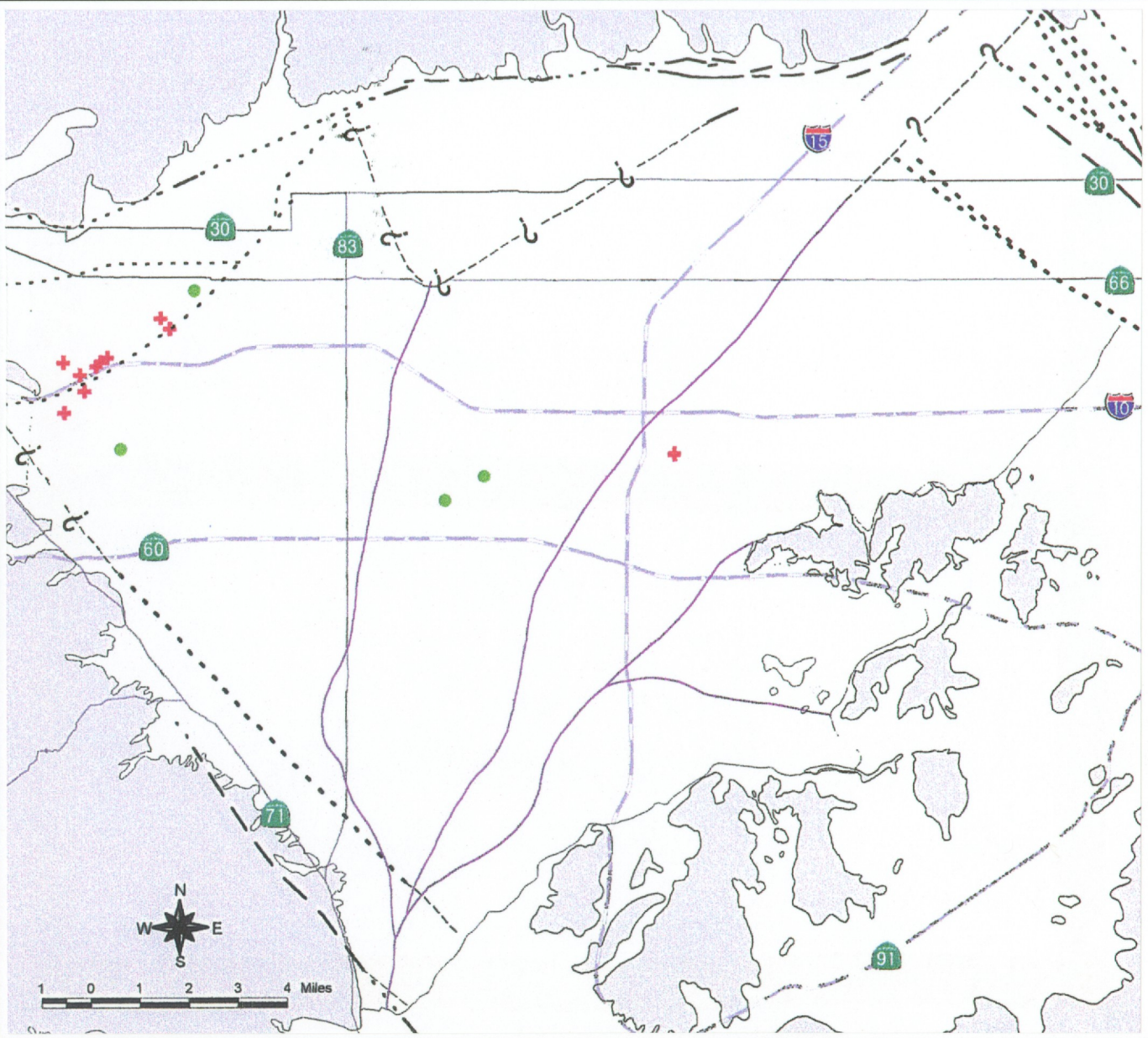
WELLS WITH ONE OR MORE HISTORICAL 1,1-DICHLOROETHANE VALUES ABOVE 1/2 THE EXISTING MCL

TOM DODSON & ASSOCIATES
Environmental Consultants

FIGURE 4.10-4

Source: OBMP Phase I Report, Figure 2-50

4-370



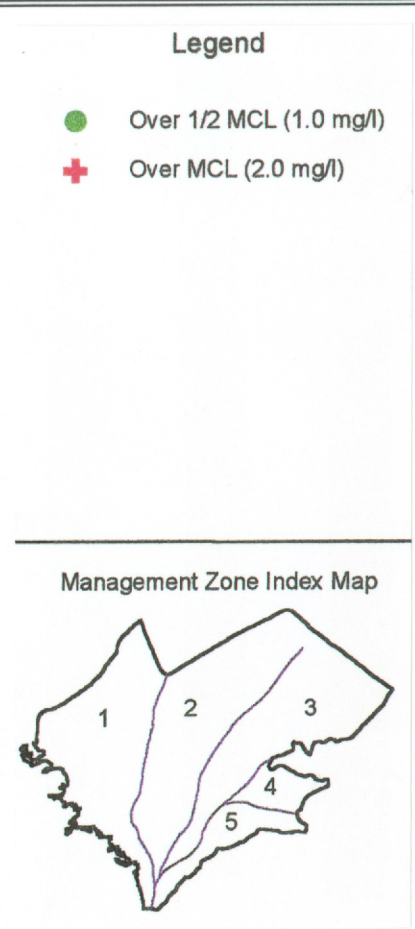
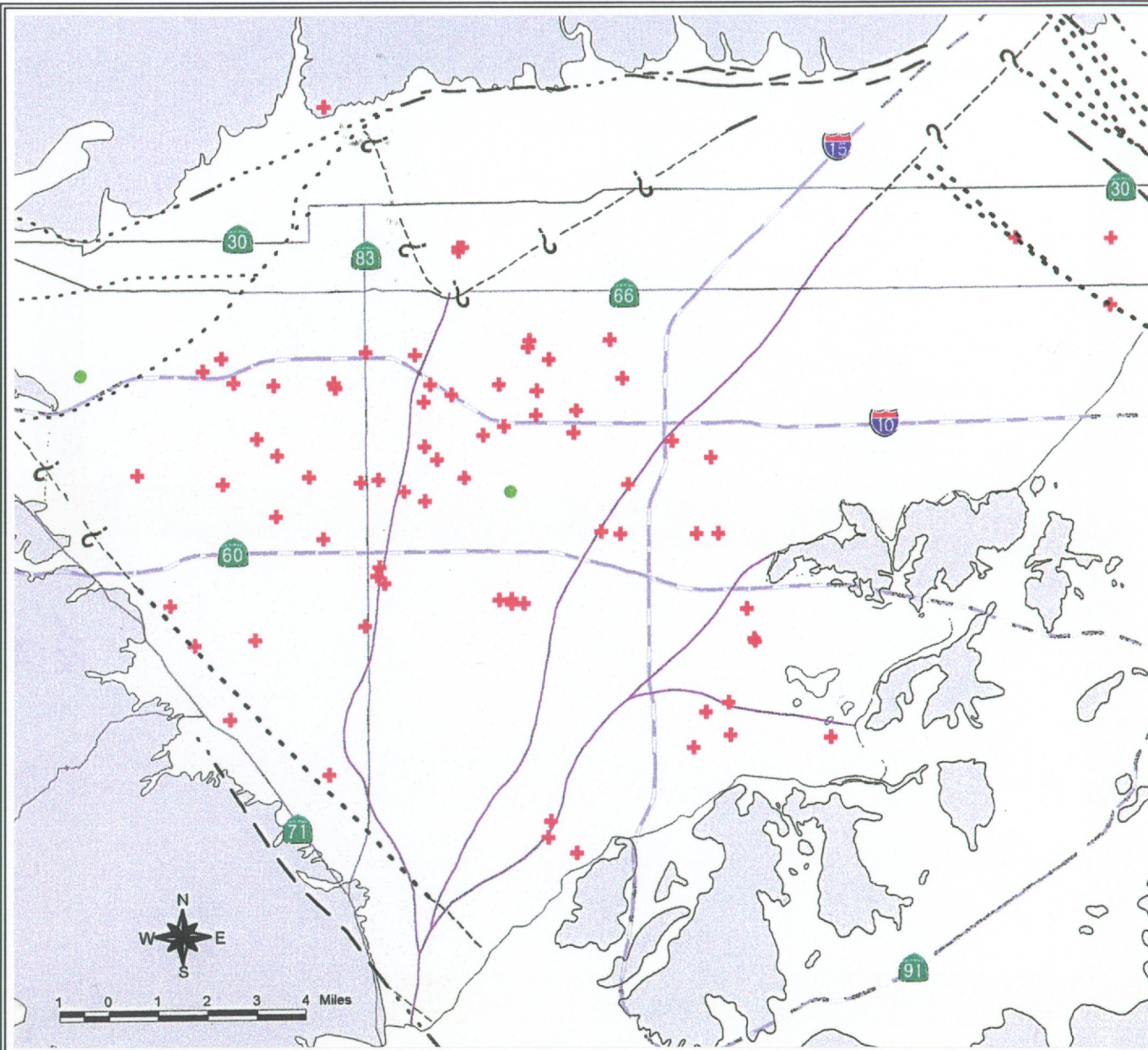
WELLS WITH ONE OR MORE HISTORICAL 1,1-DICHLOROETHENE VALUES ABOVE 1/2 THE EXISTING MCL

Source: OBMP Phase I Report, Figure 2-51

TOM DODSON & ASSOCIATES
Environmental Consultants

FIGURE 4.10-5

4-372

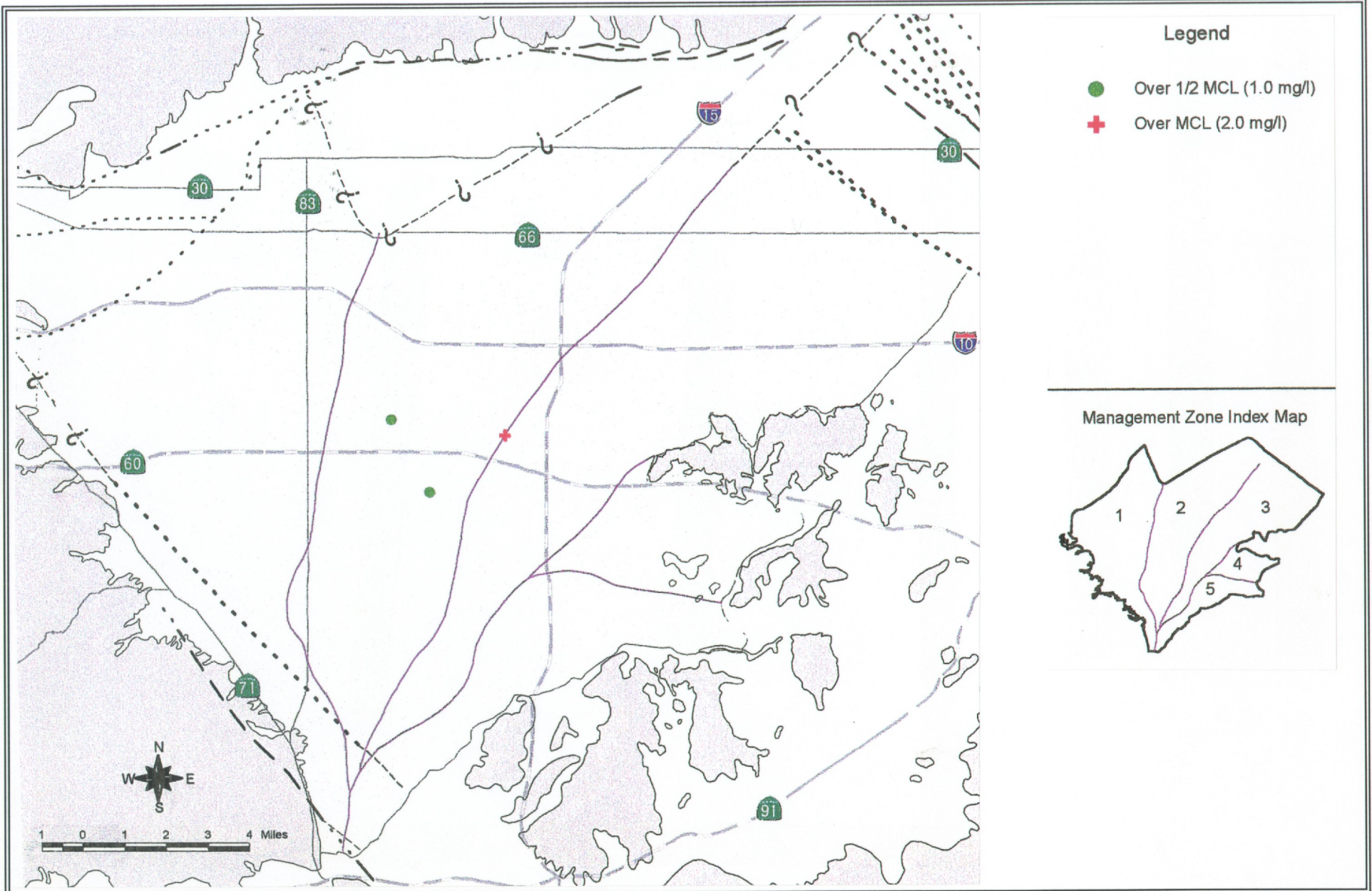


WELLS WITH ONE OR MORE HISTORICAL 1,2-DICHLOROETHANE VALUES ABOVE 1/2 THE EXISTING MCL

Source: OBMP Phase I Report, Figure 2-53

TOM DODSON & ASSOCIATES
Environmental Consultants

FIGURE 4.10-7



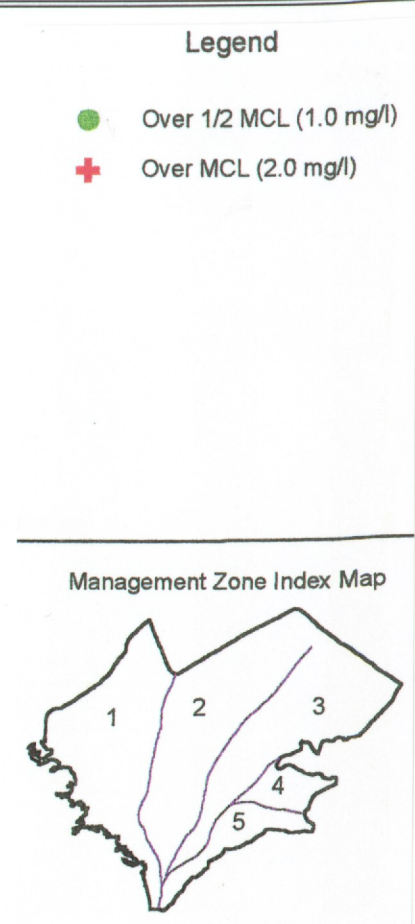
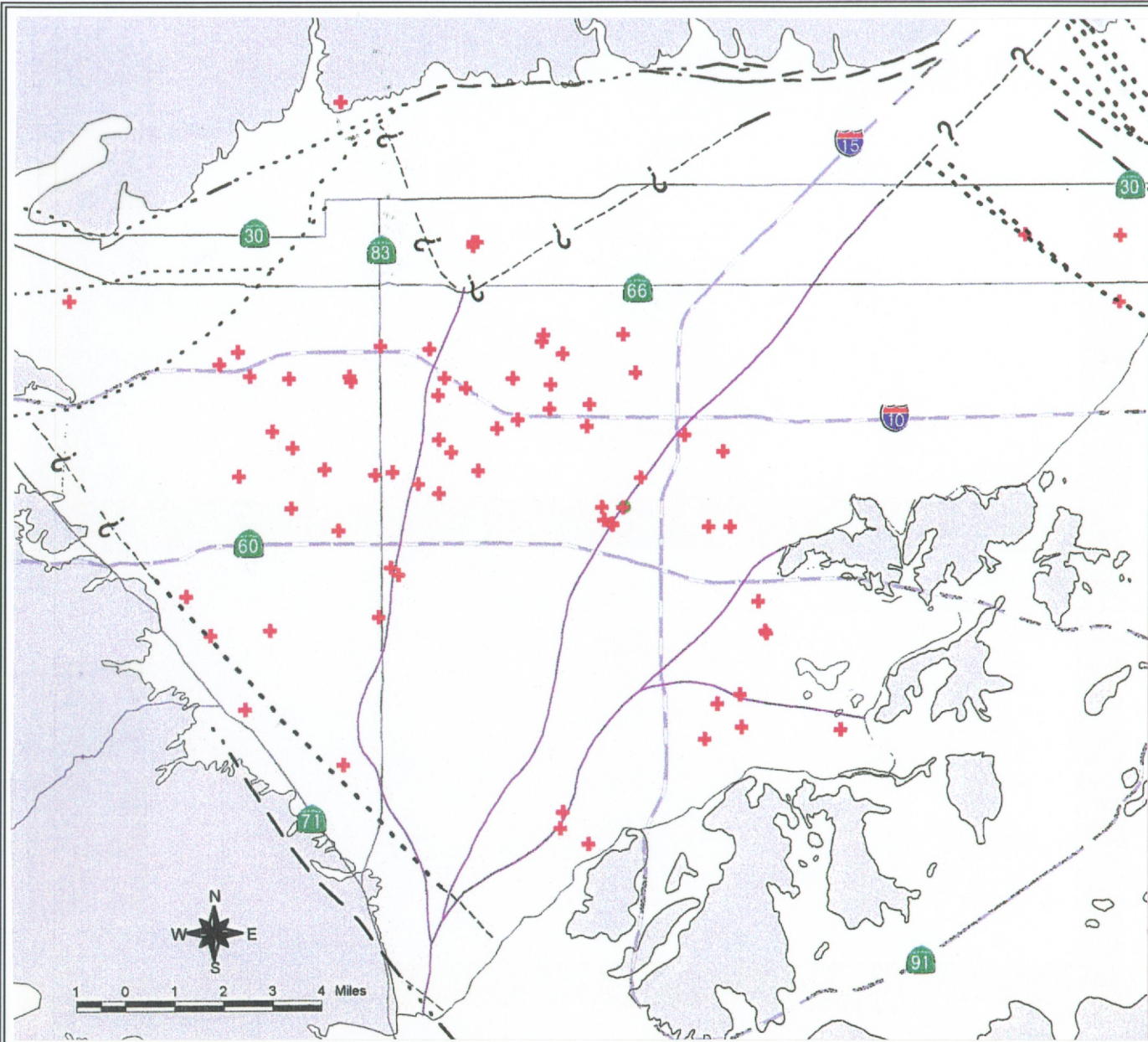
WELLS WITH ONE OR MORE HISTORICAL CIS-1,2-DICHLORO-ETHENE VALUES ABOVE 1/2 THE EXISTING MCL

Source: OBMP Phase I Report, Figure 2-52

TOM DODSON & ASSOCIATES
Environmental Consultants

FIGURE 4.10-6

4-373



**WELLS WITH ONE OR MORE HISTORICAL VINYL CHLORIDE
VALUES ABOVE 1/2 THE EXISTING MCL**

Source: OBMP Phase I Report, Figure 2-54

TOM DODSON & ASSOCIATES
Environmental Consultants

FIGURE 4.10-8