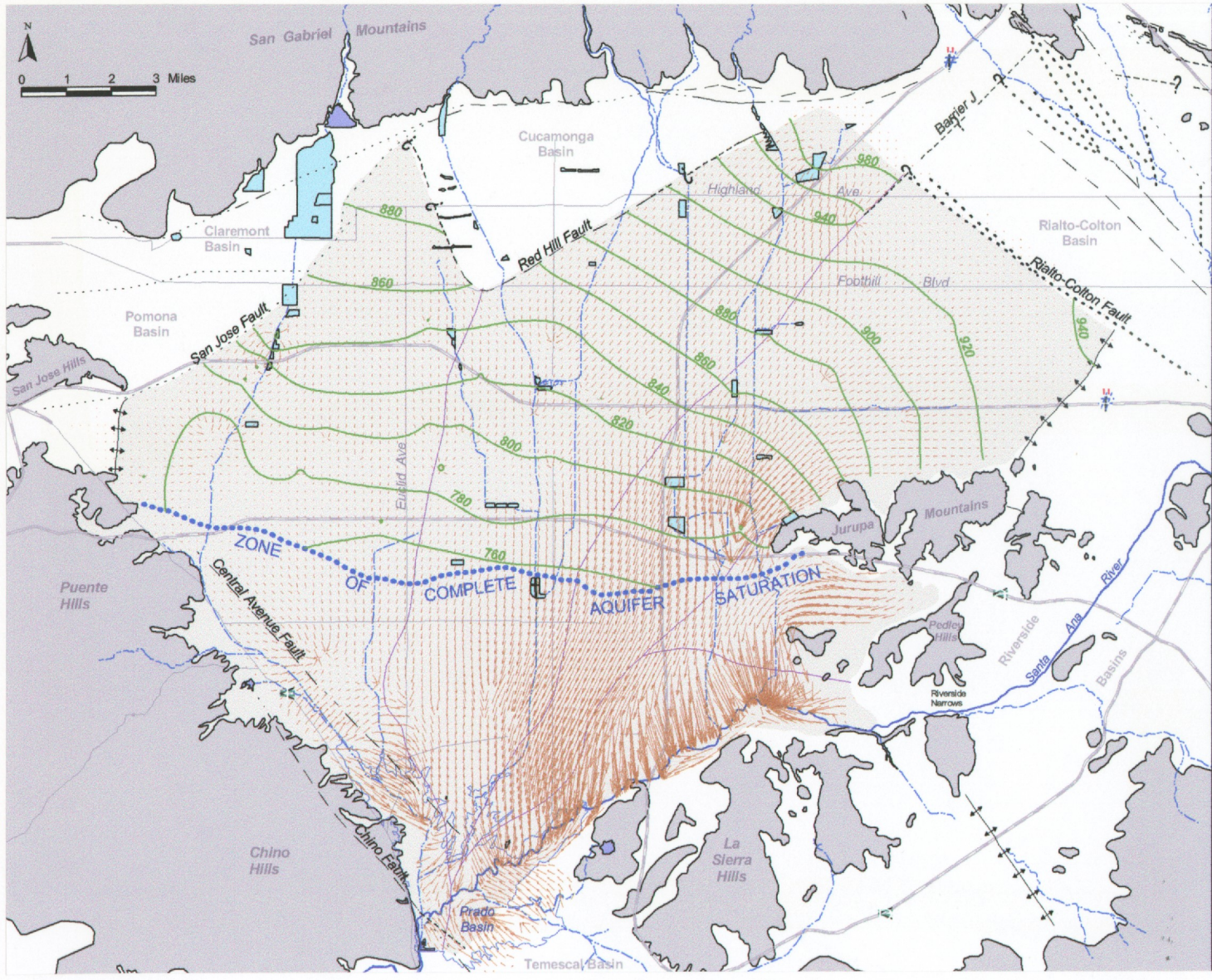


4-263



Legend

- 1200 Groundwater Elevation Contour (feet above mean sea level)
- Groundwater Flow Direction & Relative Flow Velocity
- Management Zone Boundaries
- Hydrologic Chino Basin

Other Map Features

- Unconsolidated Sediments
- Consolidated Bedrock
- Faults (solid where known, dashed where approximate, dotted where concealed, queried where uncertain)
- Groundwater Barrier (suspected fault)
- Groundwater Divide
- Spreading Ground Area
- Waterways & Reservoirs
- Major Roads & Highways

Management Zone Index

The Management Zone Index map shows the Chino region divided into five management zones: Chino-1, Chino-2, Chino-3, Chino-4, and Chino-5.

ESTIMATED GROUNDWATER ELEVATION FOR ULTIMATE CONDITIONS WITHOUT OBMP

Source: Wildermuth Environmental, Inc.

TOM DODSON & ASSOCIATES
Environmental Consultants

FIGURE 4.5-50