



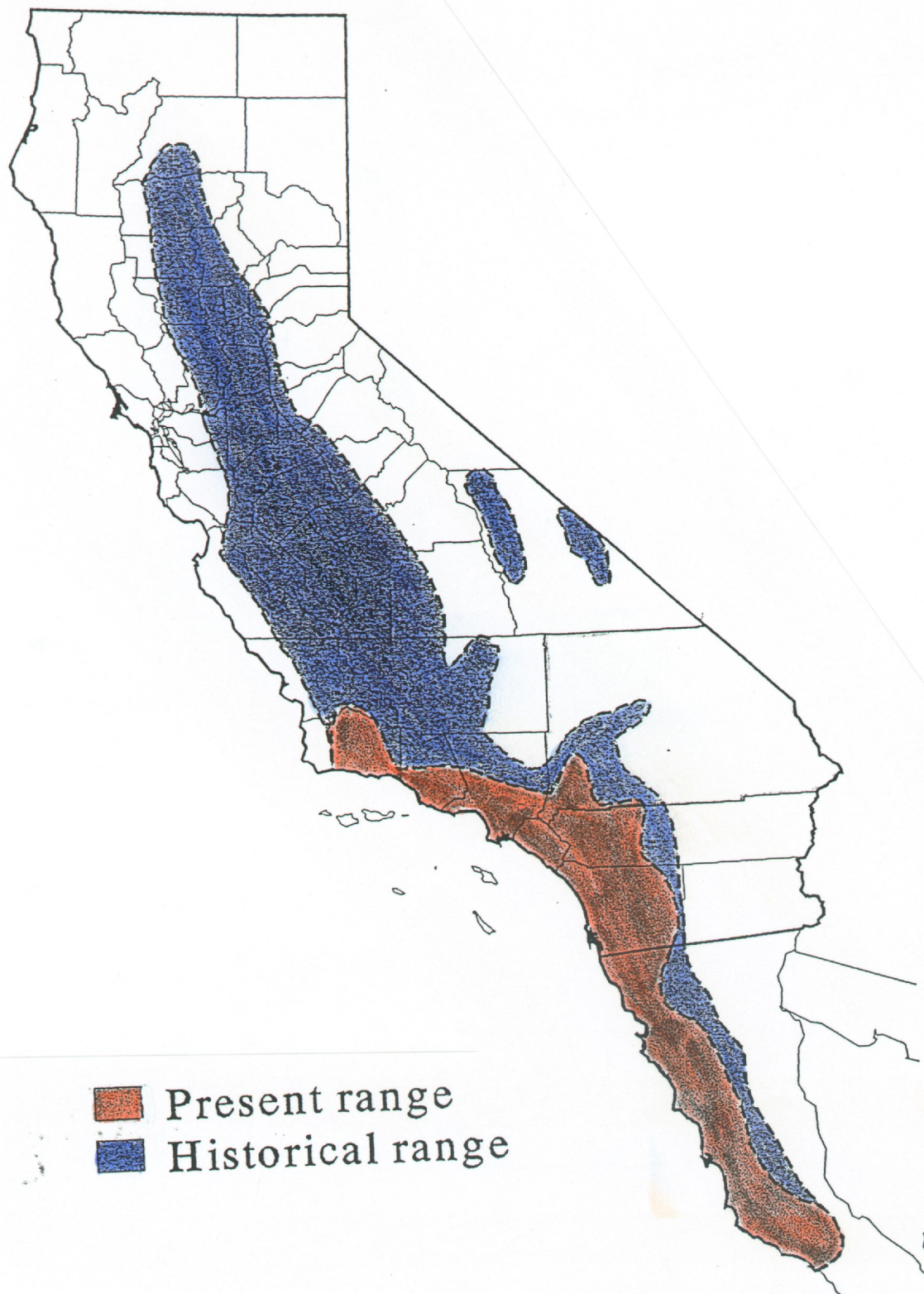
**SENSITIVE AREAS FOR ARROYO TOAD**

Source: San Bernardino County Planning Department and U.S. Fish and Wildlife Service

**TOM DODSON & ASSOCIATES**  
Environmental Consultants

**FIGURE 4.8-2**





**SENSITIVE AREAS FOR LEAST  
BELL'S VIREO**

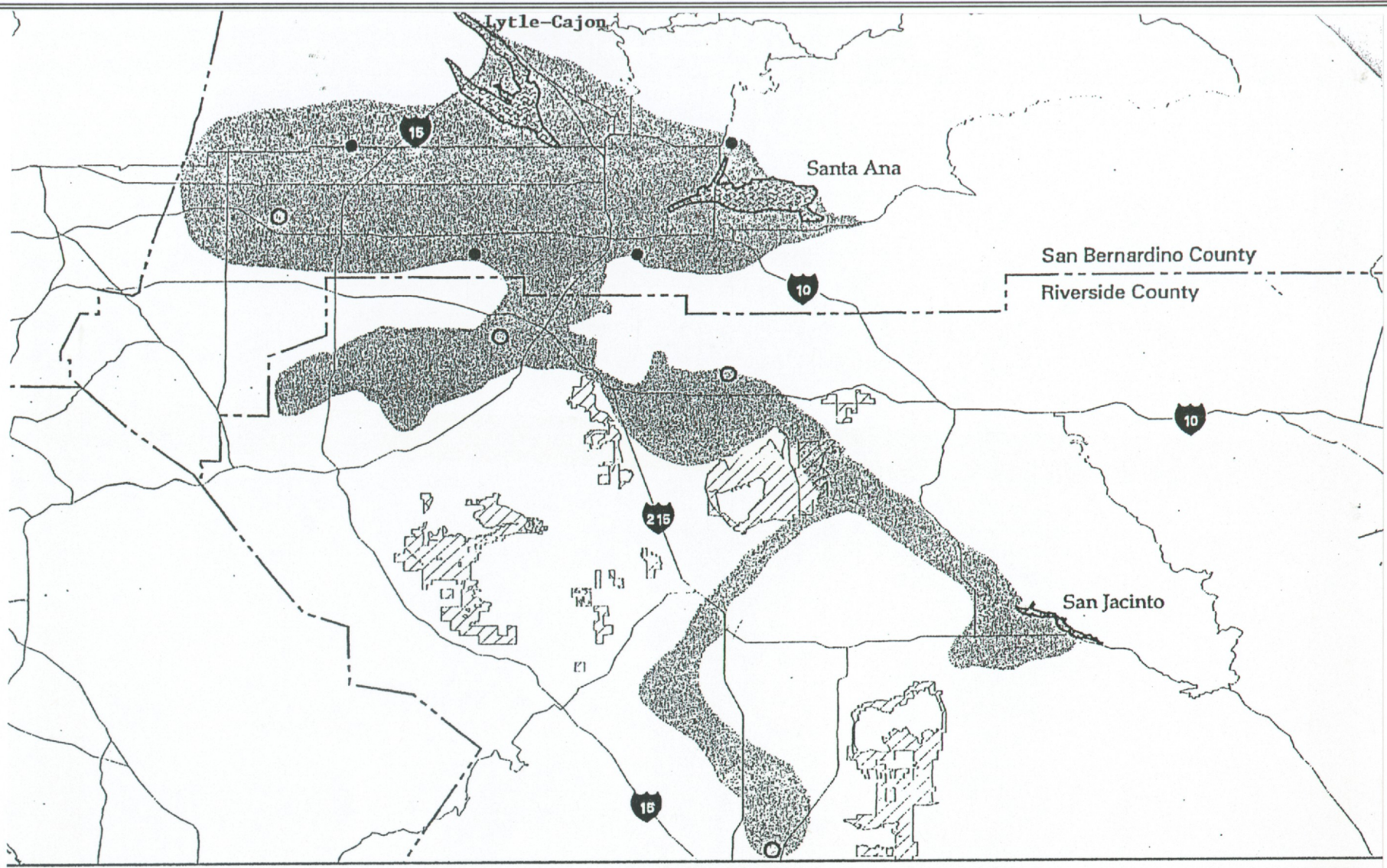
Source: San Bernardino County Planning Department

**TOM DODSON & ASSOCIATES**  
Environmental Consultants

**FIGURE 4.8-3**



4-341



- |                           |                   |                |  |                                    |
|---------------------------|-------------------|----------------|--|------------------------------------|
| Estimated Historic Range  | SKR Reserve Areas | Major Highways | Historic Locations Based on Museum Records     | SBKR = San Bernardino kangaroo rat |
| Current Major Populations | County Boundaries |                | Small Remnant Populations (< 25 acres in size) | SKR = Stephens' kangaroo rat       |

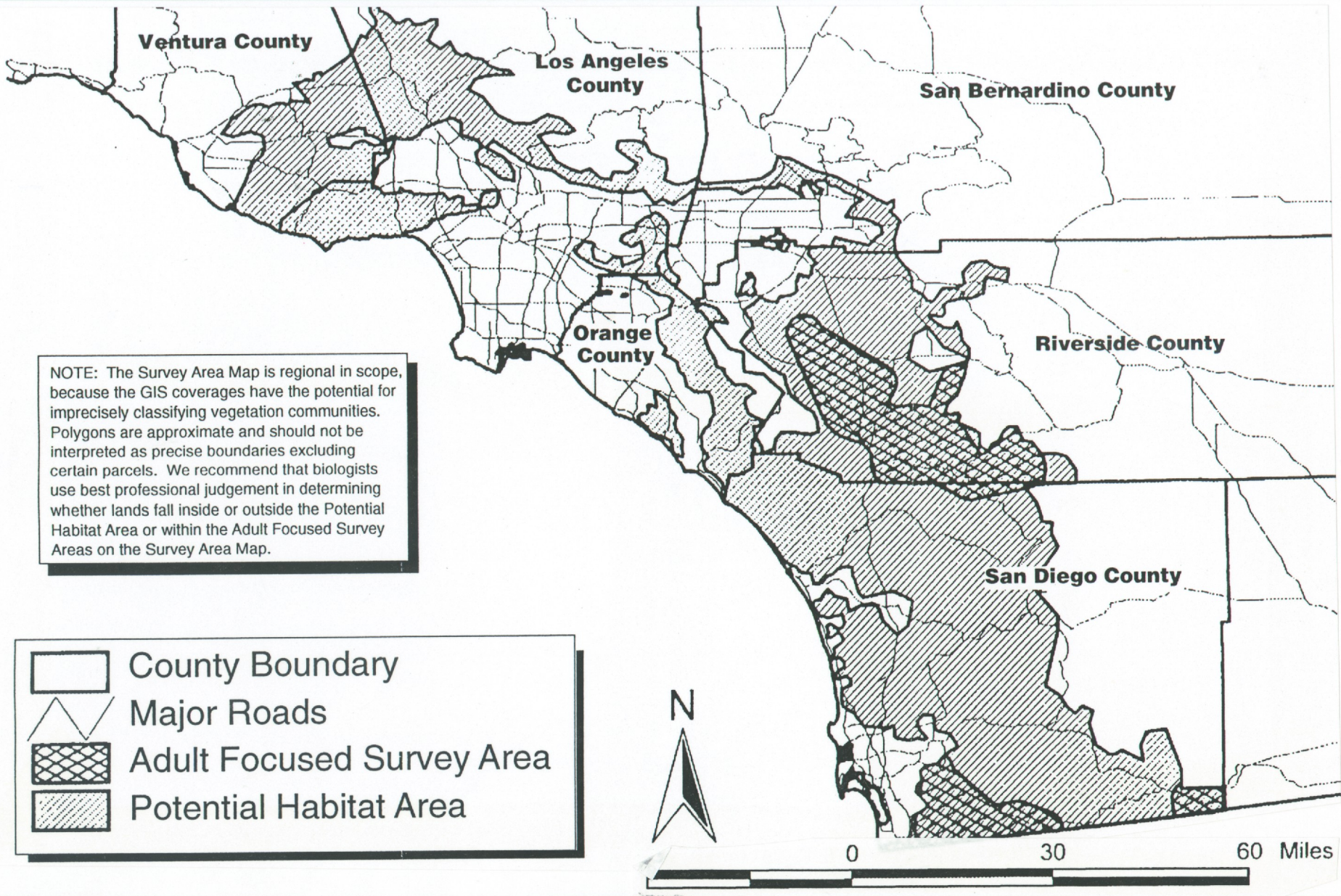
**SENSITIVE AREAS FOR SAN BERNARDINO KANGAROO RAT**

**TOM DODSON & ASSOCIATES**  
 Environmental Consultants

**FIGURE 4.8-5**

Source: U.S. Fish and Wildlife Service





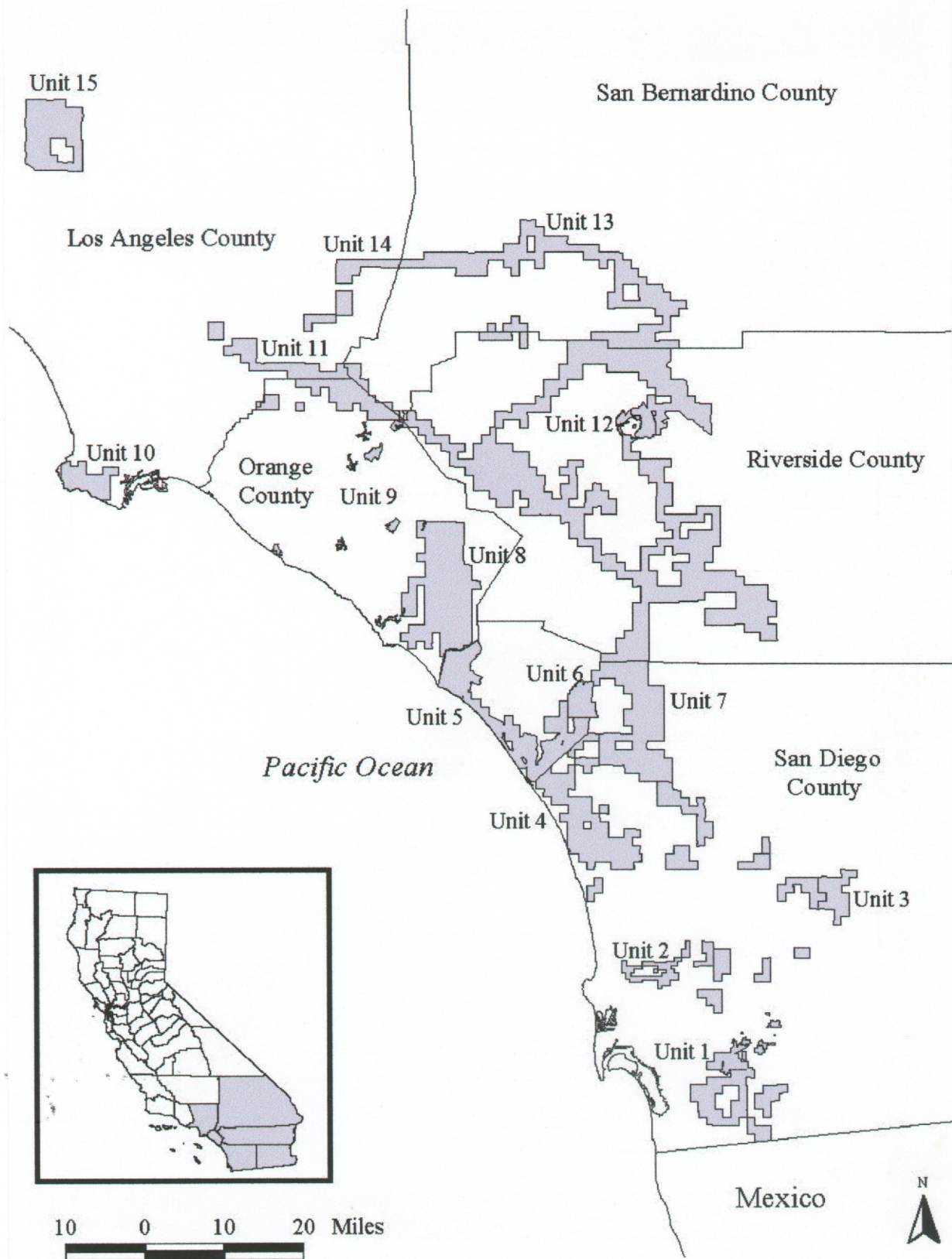
**SENSITIVE AREAS FOR QUINO CHECKERSPOT BUTTERFLY**

**TOM DODSON & ASSOCIATES**  
Environmental Consultants

**FIGURE 4.8-4**

Source: U.S. Fish and Wildlife Service





**SENSITIVE AREAS FOR COASTAL CALIFORNIA GNATCATCHER**

**TOM DODSON & ASSOCIATES**  
 Environmental Consultants

**FIGURE 4.8-6**

Source: U.S. Fish and Wildlife Service Federal Register Notice