

Figure 2 - 37e  
1975 Land Use

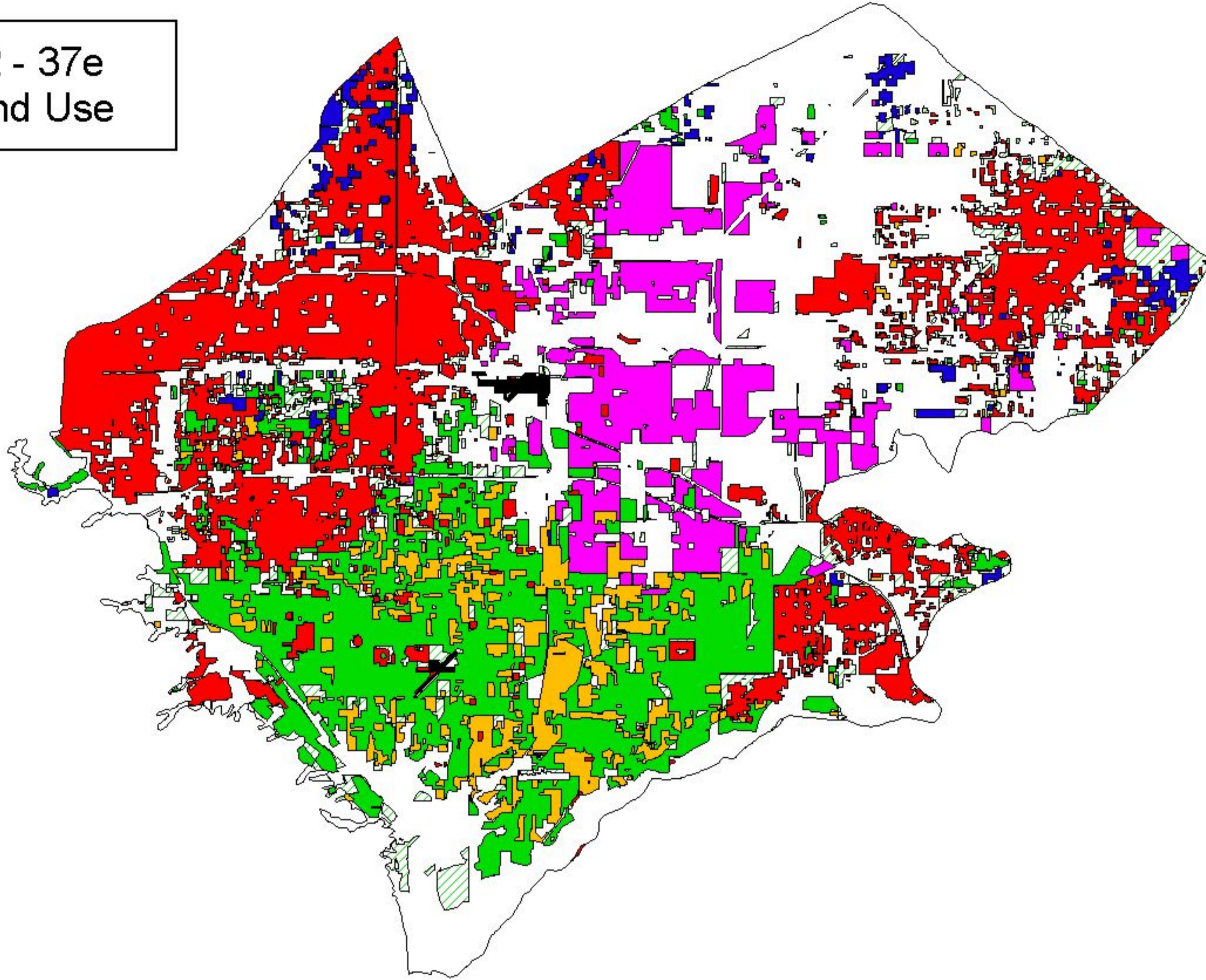
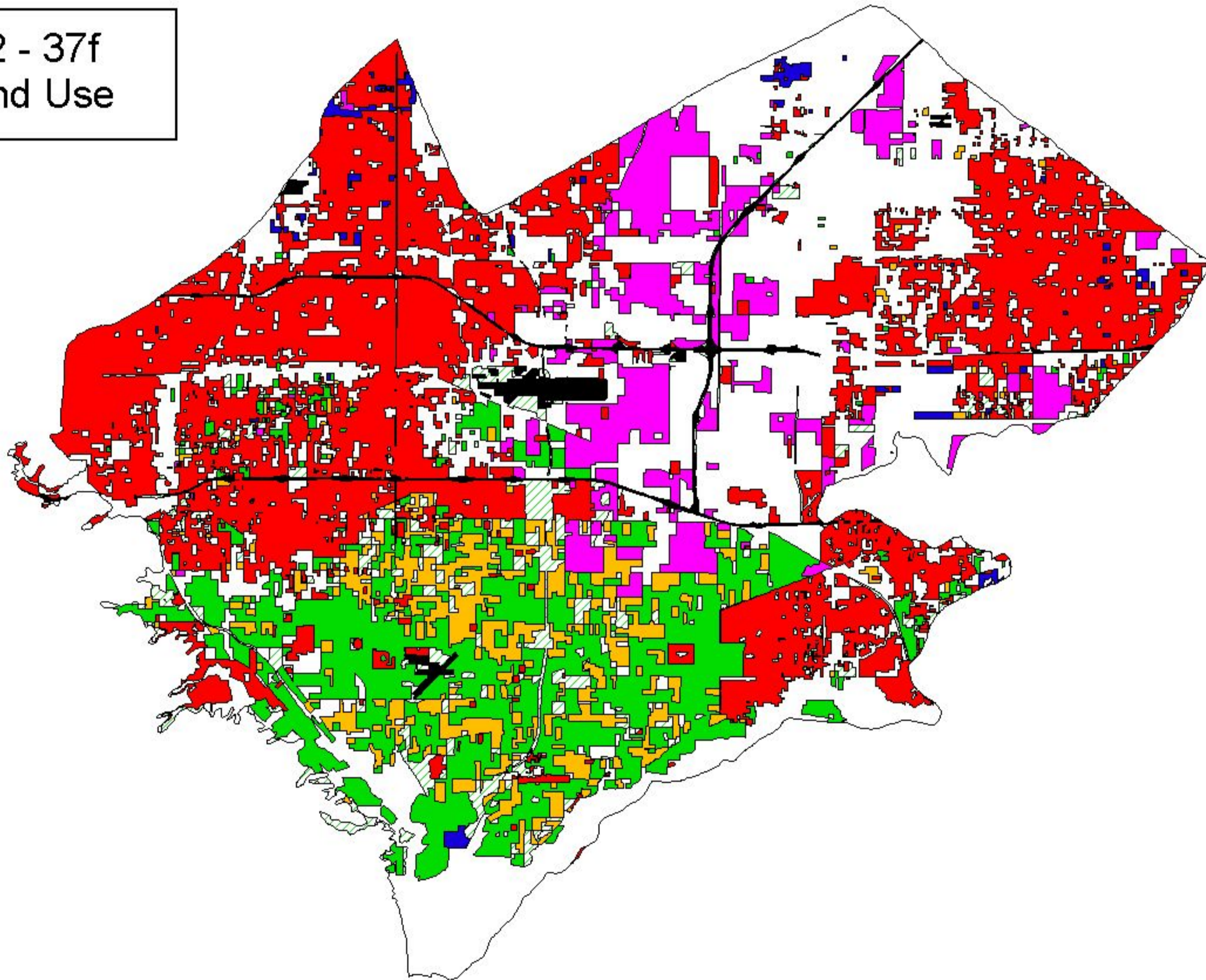
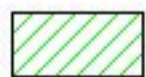










Figure 2 - 37f  
1984 Land Use



- |  |  |
|--|--|
|  Non-Irrigated Fieldcrops, Pasture  |  Dairies and Feedlots                                   |
|  Irrigated Fieldcrops, Pasture      |  Urban, Residential, Commercial, Industrial, and Vacant |
|  Irrigated and Non-Irrigated Citrus |  Native Vegetation                                      |
|  Irrigated Vineyards                |  Special Impervious                                     |
|  Non-Irrigated Vineyards            |  |

**WE** WILDERMUTH  
ENVIRONMENTAL, INC.

Date: August 19, 1999