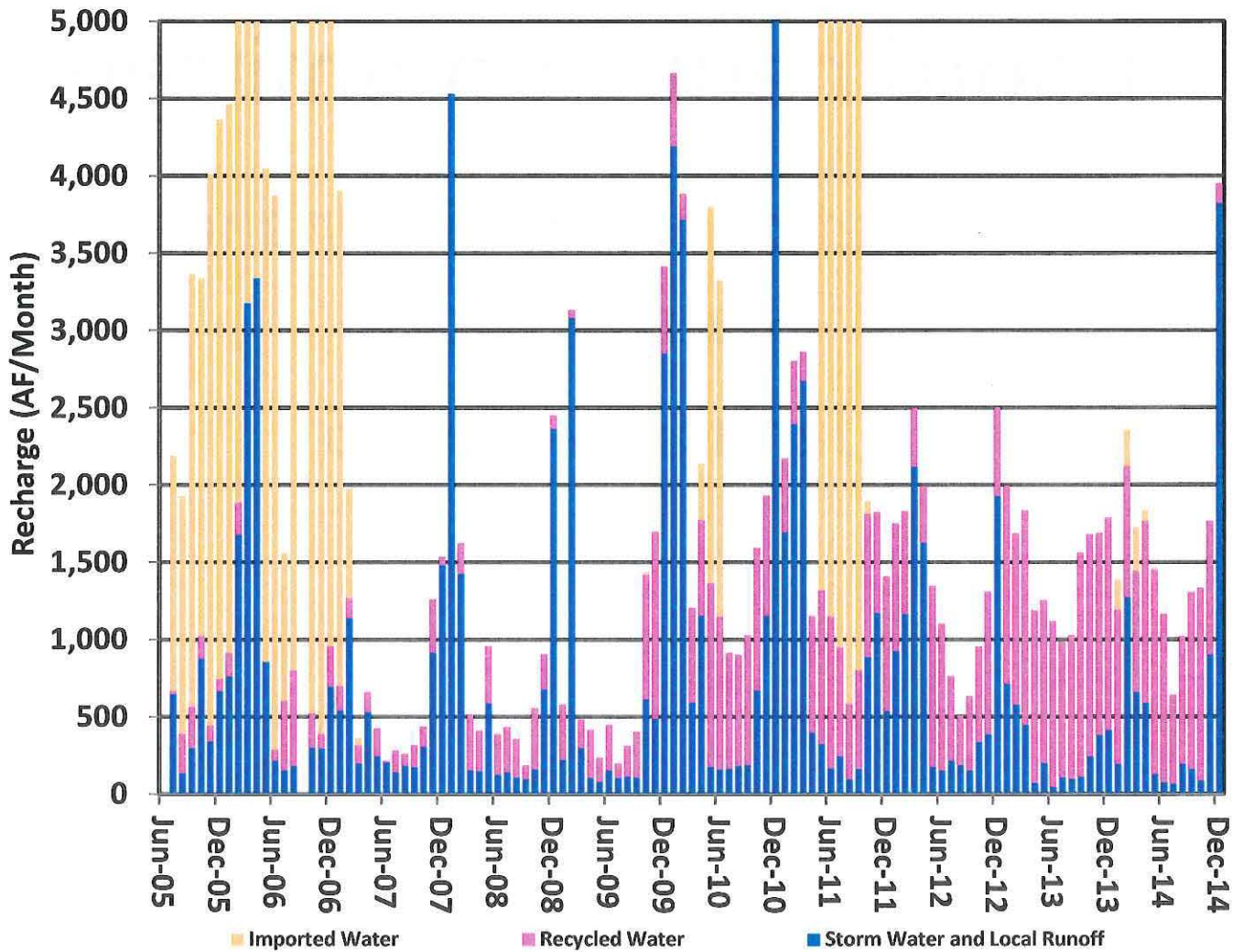


Groundwater Recharge Coordinating Committee

Operational & Maintenance
Status Report

January 27, 2015

Operational Status



SUMMARY OF CHINO BASIN GROUNDWATER RECHARGE OPERATIONS
October 2014

Drainage System	Recharge Volume (AF)*			Management Zone Subtotals	
	Basin	SW/LR	MW		RW
San Antonio Channel Drainage System					
College Heights	-	-	N	MZ-1 56 AF**	
Upland	-	-	N		
Montclair 1, 2, 3 & 4	10	-	N		
Brooks	6	-	56		
West Cucamonga Channel Drainage System					
8th Street	-	-	-	MZ-2 709 AF**	
7th Street	-	-	-		
Ely 1, 2, & 3	16	-	286		
Minor Drainage					
Grove	9	N	N		
Cucamonga and Deer Creek Channel Drainage Systems					
Turner 1 & 2	39	-	63		
Turner 3 & 4	-	-	-		
Day Creek Channel Drainage System					
Lower Day	-	-	X		
Etiwanda Channel Drainage System					
Etiwanda Debris	-	-	X		
Victoria	3	-	75		
San Sevaine Channel Drainage System					
San Sevaine 1, 2, 3, & 4	-	-	-		
San Sevaine 5	-	-	-		
West Fontana Channel System					
Hickory	-	-	226		
Banana	-	-	206		
Declez Channel Drainage System					
RP3 Cells 1,3, & 4	16	-	335		
RP3 Cell 2	9	-	-		
Declez	3	-	-		
Non-Replenishment Recharge Deduct **					
Brooks (MVWD) MZ-1	(6)				
Montclair (MVWD) MZ-1	(10)				
Turner (CVWD) MZ-2	(8)				
Upland	-				
Month Total = 1,334 AF	87	0	1,247	October 2014	
Fiscal Year to Date Total				Fiscal Year to Date	
Since July 1, 2014 = 4,303 AF	512	0	3,791		
Calendar Year to Date Total				Calendar Year to Date	
Since Jan. 1, 2014 = 13,408 AF	2,600	0	10,808		

SW : Storm Water, LR : Local Runoff (and GE, MVWD), MW : MWD Imported Water, RW : Recycled Water

- : No stormwater/local runoff, or basin not in use due to maintenance or testing.

X : Turnouts not available - to be installed during future projects.

N : No turnout planned for installation.

* : Data are preliminary based on the data available at the time of this report preparation.

** : Management Zone Subtotals have deducted from them any Non-Replenishment Recharge, which is recharge originating from pumped groundwater and is not new water.

SUMMARY OF CHINO BASIN GROUNDWATER RECHARGE OPERATIONS

November 2014

Drainage System Basin	Recharge Volume (AF)*			Management Zone Subtotals	
	SW/LR	MW	RW		
San Antonio Channel Drainage System					
College Heights	-	-	N	MZ-1 288 AF**	
Upland	48	-	N		
Montclair 1, 2, 3 & 4	30	-	N		
Brooks	28	-	37		
West Cucamonga Channel Drainage System					
8th Street	140	-	-	MZ-2 837 AF**	
7th Street	6	-	-		
Ely 1, 2, & 3	170	-	70		
Minor Drainage					
Grove	53	N	N		
Cucamonga and Deer Creek Channel Drainage Systems					
Turner 1 & 2	108	-	58		
Turner 3 & 4	-	-	-		
Day Creek Channel Drainage System					
Lower Day	25	-	X		
Etiwanda Channel Drainage System					
Etiwanda Debris	2	-	X		
Victoria	57	-	4		
San Sevaine Channel Drainage System					
San Sevaine 1, 2, 3, & 4	15	-	-		
San Sevaine 5	3	-	-		
West Fontana Channel System					
Hickory	-	-	272	MZ-3 642 AF**	
Banana	7	-	173		
Declez Channel Drainage System					
RP3 Cells 1,3, & 4	100	-	250		
RP3 Cell 2	12	-	-		
Declez	100	-	-		
Non-Replenishment Recharge**					
Upland (SAWCo) MZ-1	-				
Montclair (MVWD) MZ-1	(1)				
Turner (SAWCO) MZ-2	-				
Month Total = 1,767 AF					
	903	0.0	864	November 2014	
Fiscal Year to Date Total					
Since July 1, 2014 = 6,070 AF	1,415	0.0	4,655	Fiscal Year to Date	
Calendar Year to Date Total					
Since Jan. 1, 2014 = 15,175 AF	3,503	0.0	11,672	Calendar Year to Date	

SW : Storm Water, LR : Local Runoff (and GE, MVWD), MW : MWD Imported Water, RW : Recycled Water

- : No stormwater/local runoff, or basin not in use due to maintenance or testing.

X : Turnouts not available - to be installed during future projects.

N : No turnout planned for installation.

* : Data are preliminary based on the data available at the time of this report preparation.

** : Management Zone Subtotals have deducted from them any Non-Replenishment Recharge, which is recharge originating from pumped groundwater and is not new water.

SUMMARY OF CHINO BASIN GROUNDWATER RECHARGE OPERATIONS
December 2014

Drainage System Basin	Recharge Volume (AF)*			Management Zone Subtotals	
	SW/LR	MW	RW		
San Antonio Channel Drainage System					
College Heights	-	-	N	MZ-1 897 AF**	
Upland	186	-	N		
Montclair 1, 2, 3 & 4	267	-	N		
Brooks	95	-	-		
West Cucamonga Channel Drainage System					
8th Street	199	-	-	MZ-2 2,097 AF**	
7th Street	154	-	-		
Ely 1, 2, & 3	392	-	5		
Minor Drainage					
Grove	202	N	N		
Cucamonga and Deer Creek Channel Drainage Systems					
Turner 1 & 2	255	-	2		
Turner 3 & 4	348	-	-		
Day Creek Channel Drainage System					
Lower Day	241	-	X		
Etiwanda Channel Drainage System					
Etiwanda Debris	23	-	X		
Victoria	153	-	-		
San Sevaine Channel Drainage System					
San Sevaine 1, 2, 3, & 4	112	-	-		
San Sevaine 5	135	-	-		
West Fontana Channel System					
Hickory	185	-	46		
Banana	145	-	67		
Declez Channel Drainage System					
RP3 Cells 1,3, & 4	373	-	6	MZ-3 952 AF**	
RP3 Cell 2	46	-	-		
Declez	315	-	-		
Non-Replenishment Recharge**					
Upland (SAWCo) MZ-1	-				
Montclair (MVWD) MZ-1	(4)				
Turner (CVWD) MZ-2	(2)				
Month Total = 3,946 AF	3,820	0.0	126	December 2014	
Fiscal Year to Date Total				Fiscal Year to Date	
Since July 1, 2014 = 10,016 AF	5,235	0.0	4,781		
Calendar Year to Date Total				Calendar Year to Date	
Since Jan. 1, 2014 = 19,121 AF	7,323	0.0	11,798		

SW : Storm Water, LR : Local Runoff (and GE, MVWD), MW : MWD Imported Water, RW : Recycled Water
 - : No stormwater/local runoff, or basin not in use due to maintenance or testing.
 X : Turnouts not available - to be installed during future projects.
 N : No turnout planned for installation.
 * : Data are preliminary based on the data available at the time of this report preparation.
 ** : Management Zone Subtotals have deducted from them any Non-Replenishment Recharge, which is recharge originating from pumped groundwater and is not new water.

Upcoming Maintenance Activities

- 1. 7th & 8th Street Basins
Infiltration Restoration
Project**
- 2. Turner Basins 3 & 4A Silt
Removal**
- 3. Brooks Basin Inlet Gate
Repair**
- 4. Turner Basin 1 Inlet Gate**
- 5. RP-3 Channel Cleaning**
- 6. Turner Basins 1 & 2 Silt
Removal**
- 7. Declez Basin 1 Silt Removal**