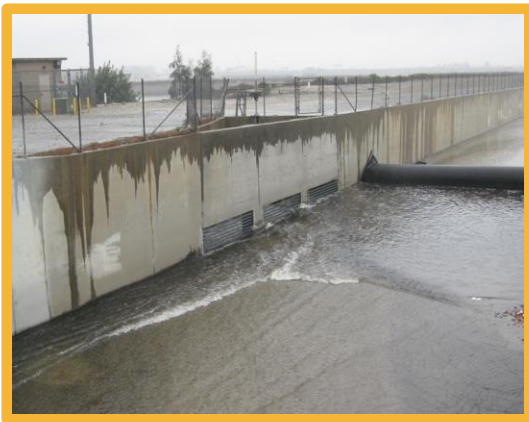
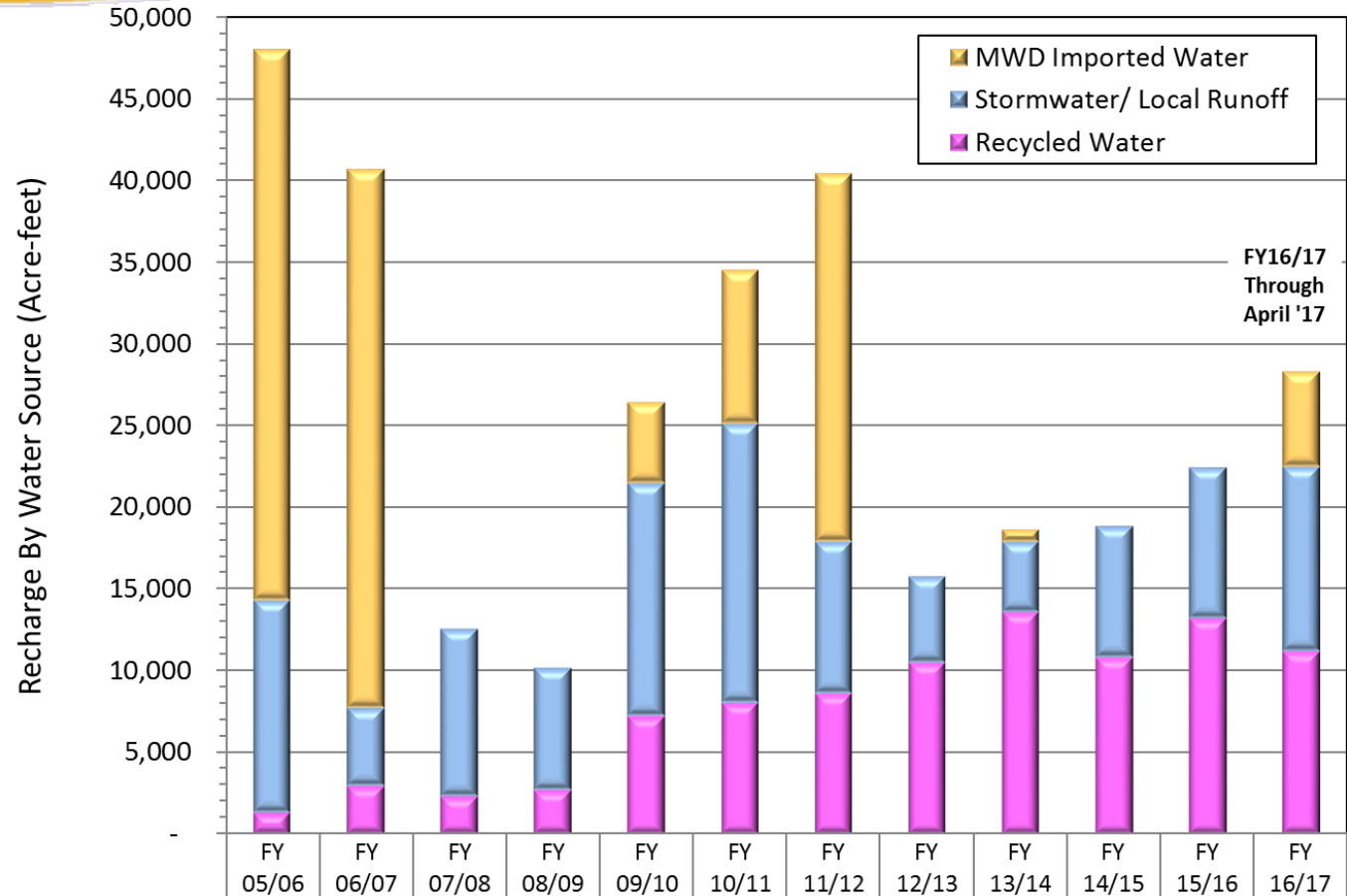


Groundwater Recharge O&M Update

Watermaster Advisory Committee Meeting

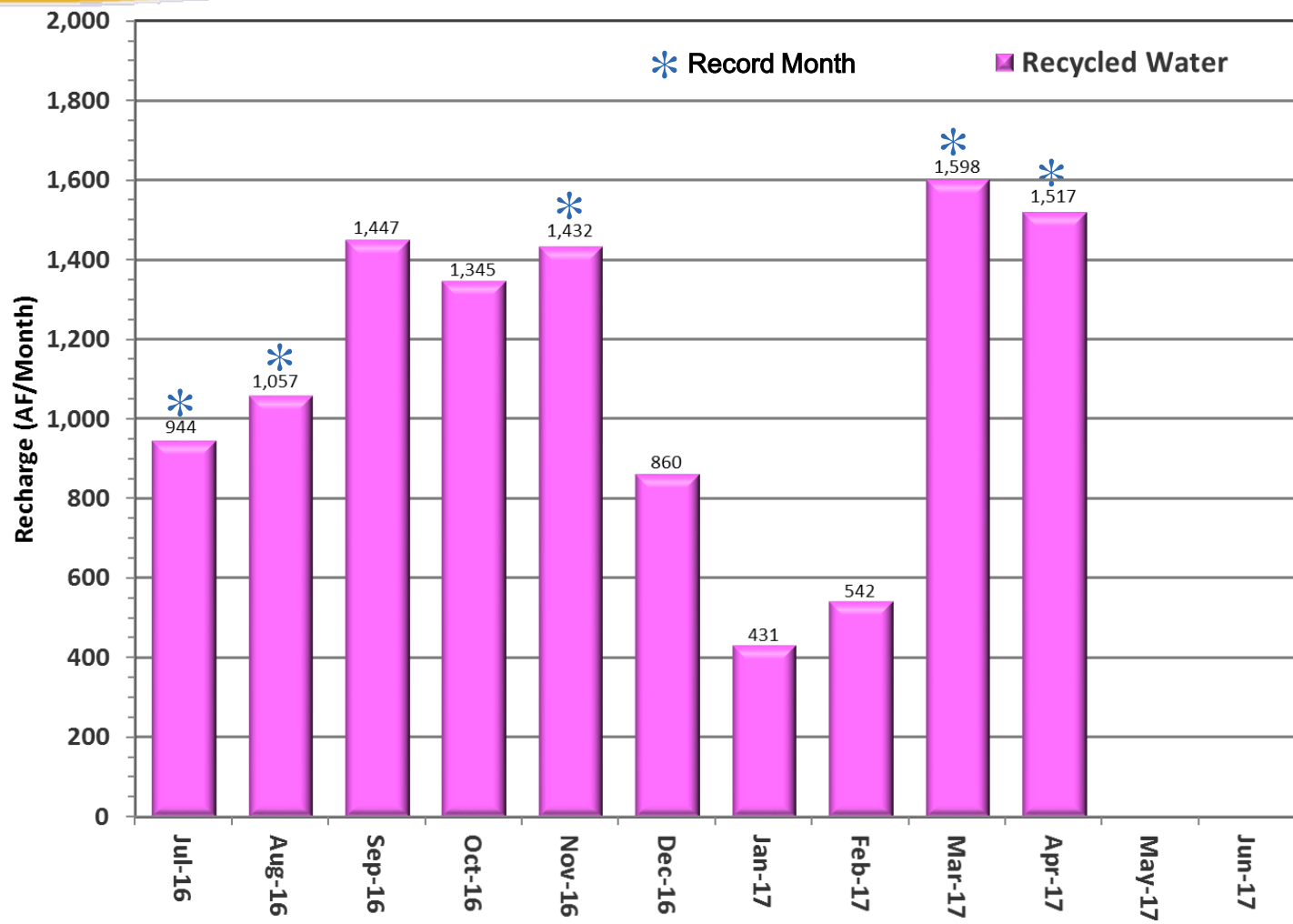


RECHARGE PROGRAM – 12-YEAR HISTORY

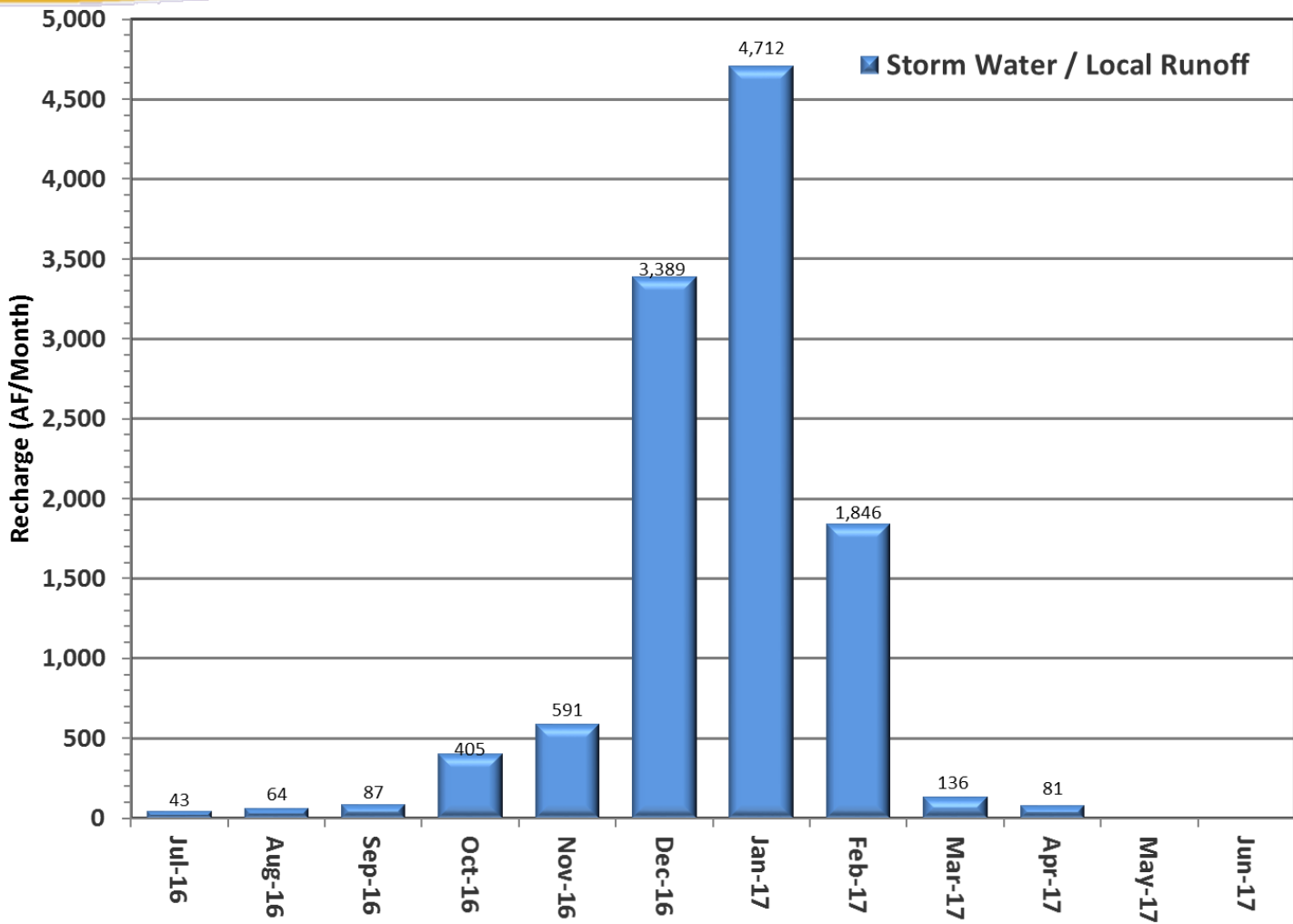


MWD Imported Water	33,756	32,968	-	-	5,000	9,465	22,560	-	795	-	-	5,811
Stormwater/ Local Runoff	12,999	4,770	10,243	7,498	14,274	17,051	9,266	5,298	4,299	7,996	9,226	11,353
Recycled Water	1,304	2,989	2,340	2,684	7,210	8,065	8,634	10,479	13,593	10,840	13,222	11,173

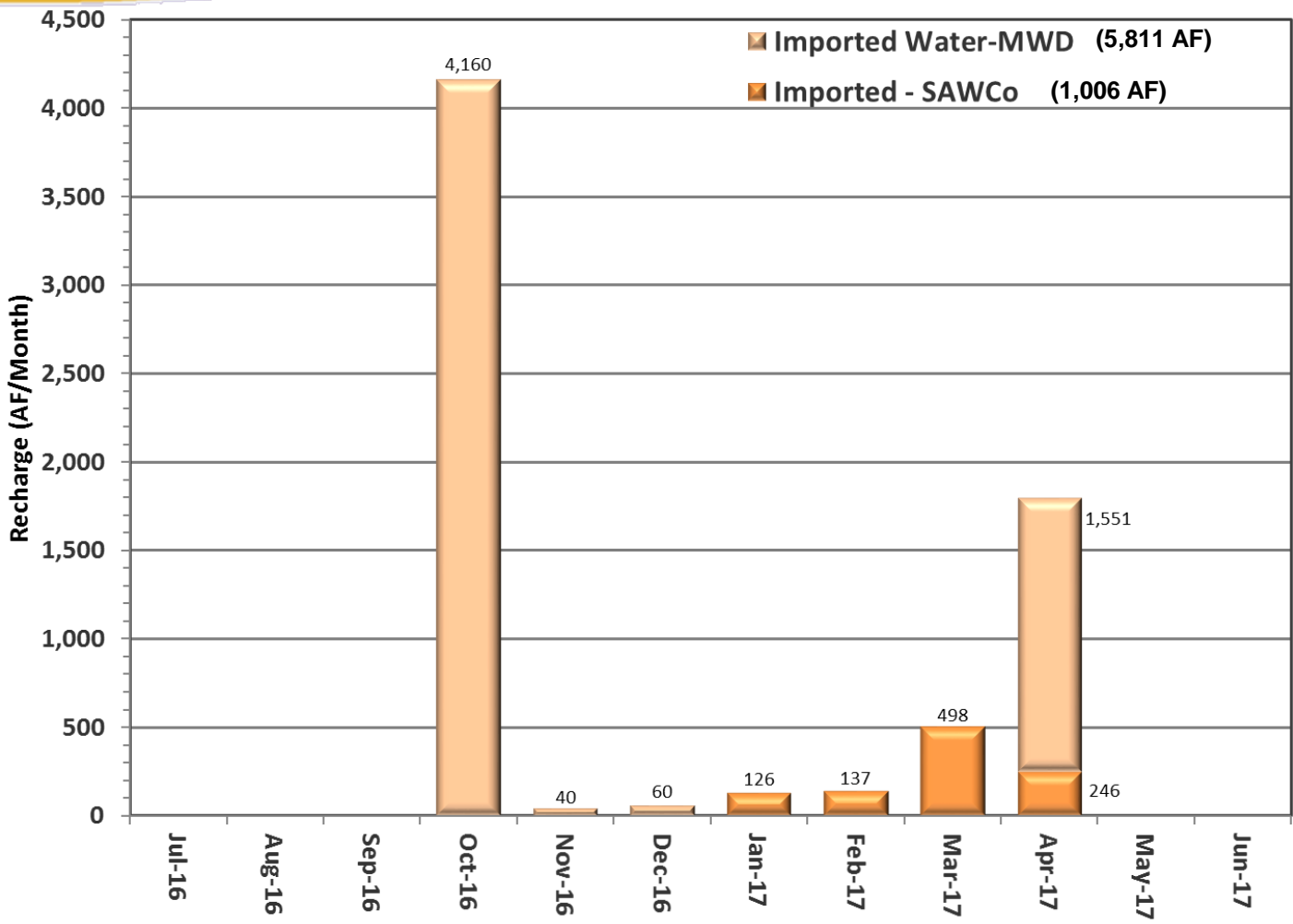
Recycled Water (FY16/17 through April)



STORMWATER (FY16/17 through April)



IMPORTED WATER (FY16/17 through April)



Upcoming Activities

- FY2016/17
 - Completed Infiltration Restorations (Declez, RP3 1&4, Victoria, & Turner 3&4)
 - Upcoming Infiltration Restoration Hickory and Banana Basins (May-June)
 - SAWCo Water Deliveries
- FY2017/18
 - Infiltration Restoration - Ely (May 2018)
 - Soil Removal Declez & 8th (Aug 2017)
 - Rubber Dam Purchase of Backup (Summer 2017)

Banana Basin - dewater for cleaning



Turner Rubber Dam - 13 year wear



Questions

Etiwanda
Debris
Basin

