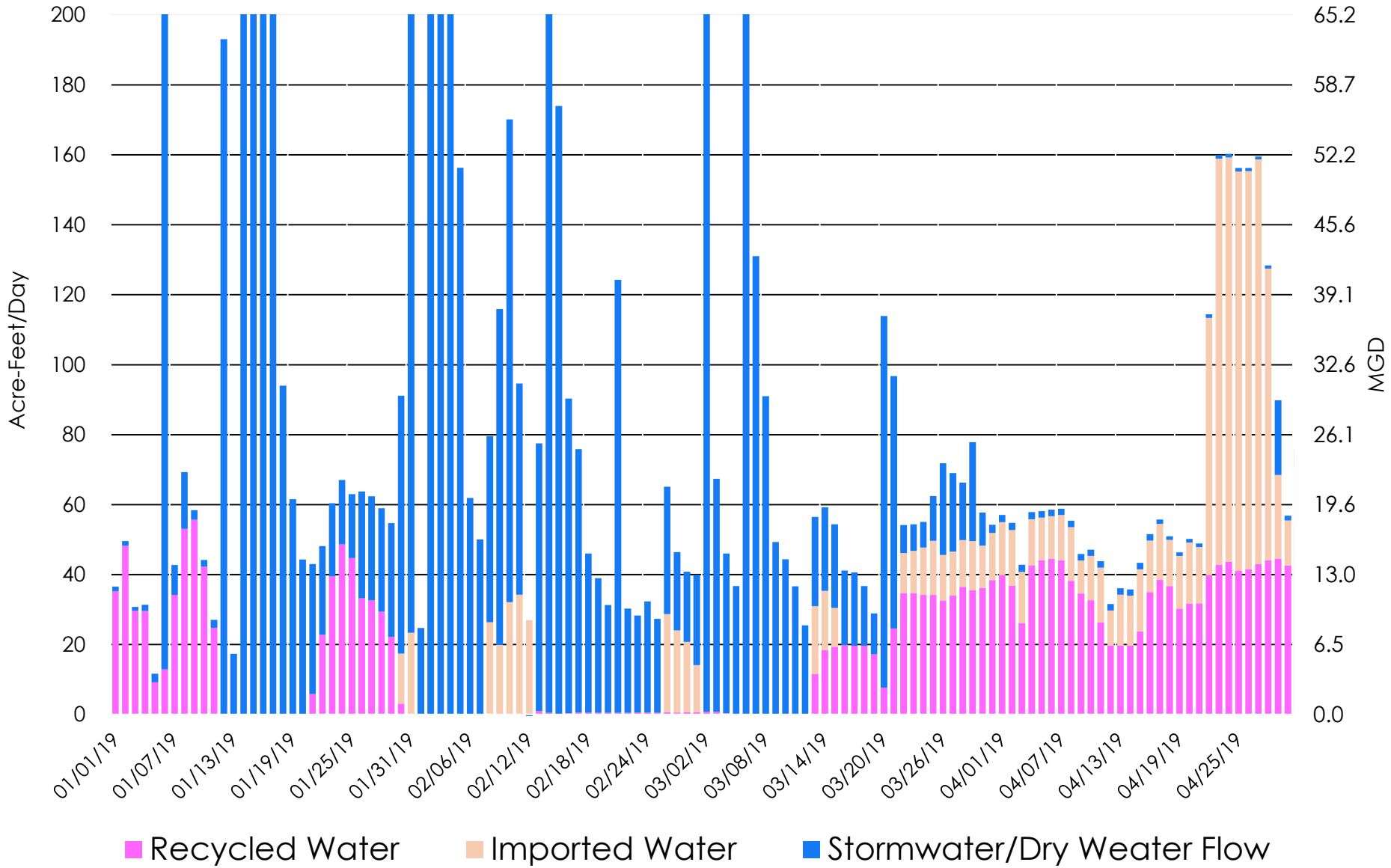


GWR O&M UPDATE

GRCC
JUNE 11, 2019

Garrett Bell
IEUA

GWR Daily Deliveries By Water Type



WATER CAPTURE SINCE JAN 2019



BURROWING OWL/BIRD SURVEY

BASIN INFILTRATION RESTORATION CURRENT ACTIVITIES



Apr 3, 2019 9:56:51 AM



BANANA BASIN

Dewatering Begun

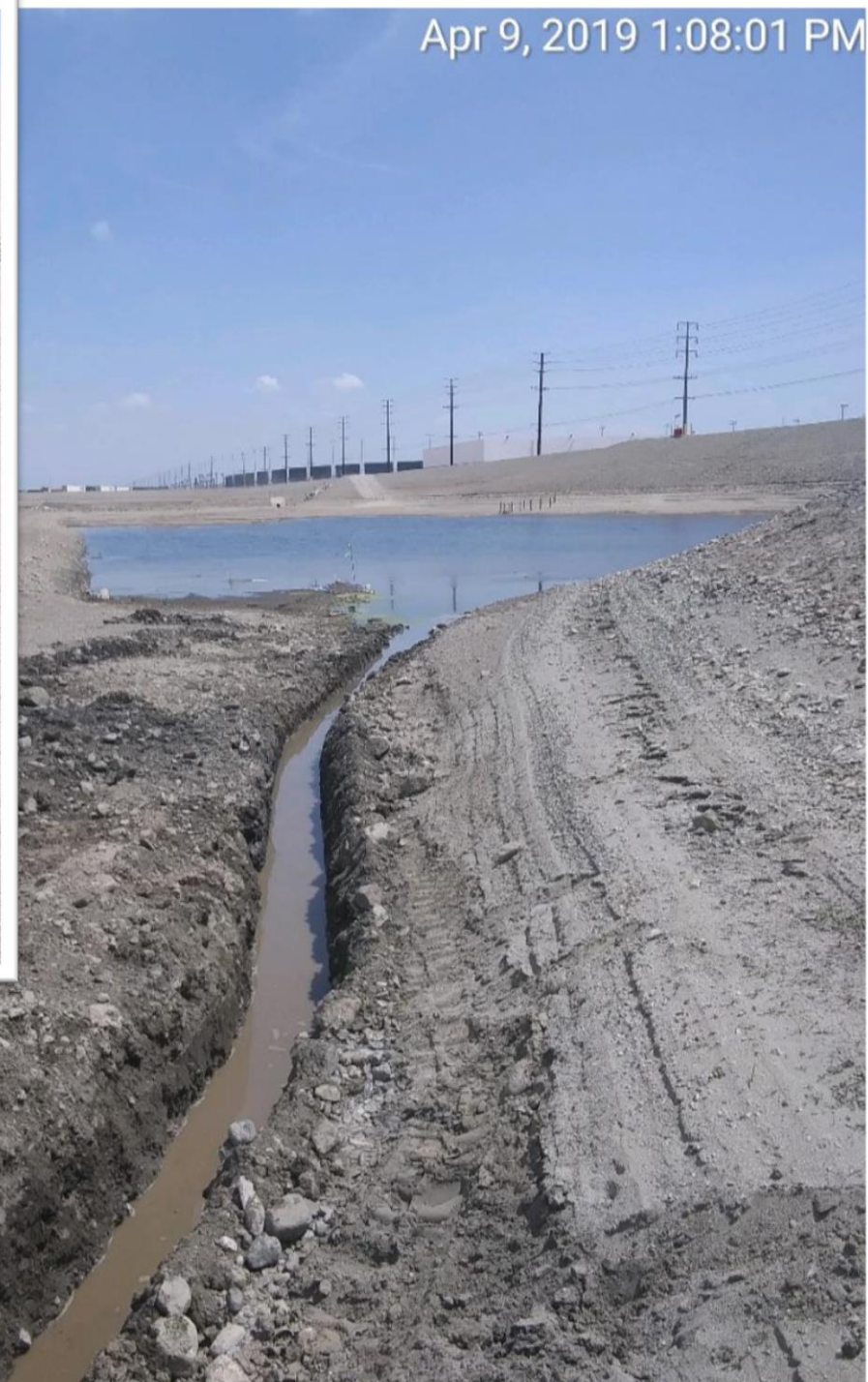
May 7, 2019 2:37:09 PM



BANANA BASIN

Water added to provide habitat for nesting fowl, Work has begun on basin as of 6/10/2019

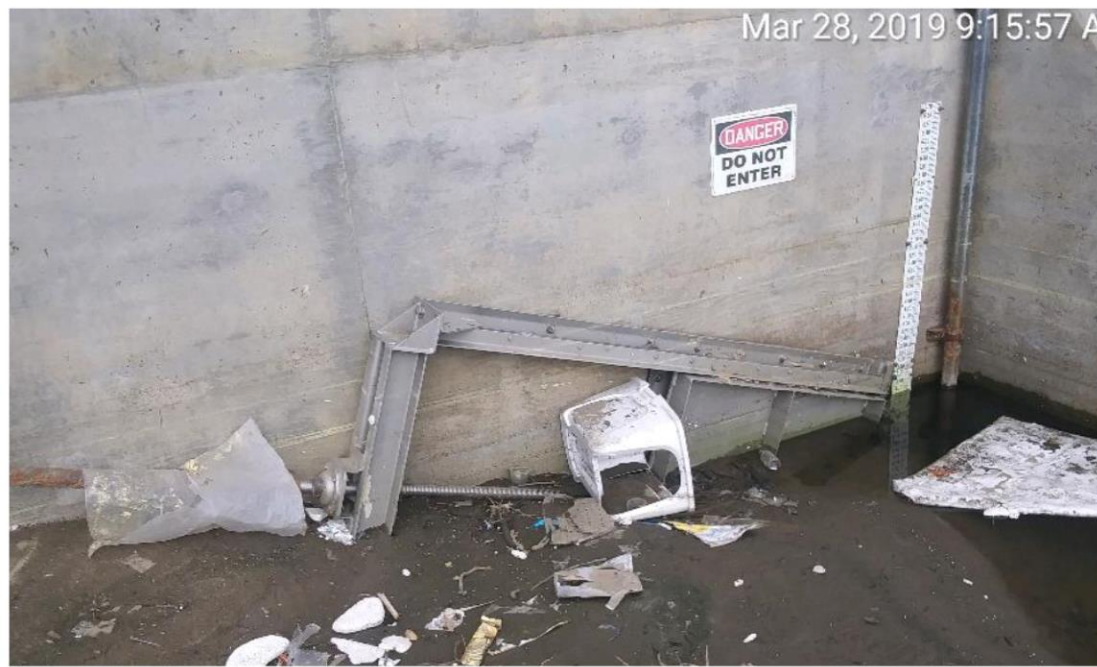
Apr 9, 2019 1:08:01 PM



HICKORY BASIN

Dewatering Ditch Digging

Mar 28, 2019 9:15:57 A



Mar 28, 2019 10:11:43 AM



HICKORY BASIN

Digging out gate for water transfer

May 21, 2019 1:58:51 PM



May 23, 2019 8:55:16 AM



HICKORY BASIN

Contractor initial cut of
main floor

Apr 4, 2019 12:44:03 PM



RP3 BASIN

Dewatering



RP3 BASIN Scraping Cell 3

May 13, 2019 9:39:00 AM



RP3 BASIN Cell 3 example of material



RP3 BASIN

Channel to be cleared of storm debris



ELY BASIN FORE BAY RAINS DELAYING PUMPING

May 15, 2019 at 11:55:46



May 15, 2019 at 11:37:40



ELY BASIN 1 AND 2 LOW FLOW CHANNEL CLEANOUT

Jun 11, 2019 10:27:18 AM



ELY 3 BASIN PUMPING

Feb 17, 2019 1:57:08 PM



Turner Basin 4A,B,C



Turner 2 Basin



Victoria Basin



Declez Cell 1

FUTURE BASIN INFILTRATION RESTORATION PROJECTS

DRY YEAR YIELD ACTIVITIES



May 15, 2019 11:07:16 AM



ETIWANDA DEBRIS BASIN
INFILTRATION RESTORATION NEEDED FOR DYY



San Sevaine Basin 2 (storm water pumping)

COMPLETED PIPELINE AND TURNOUTS TO FEED SAN SEVAINE BASINS 1,2,3

May 30, 2019 3:43:00 PM



SAN SEVAINE 2 BASIN WEED REMOVAL NEARLY COMPLETE

Feb 26, 2019 at 11:31:28



ETIWANDA DEBRIS BASIN ERROSION



DROP INLET FROM ETIWANDA CHANNEL
FILLED WITH STORM DEBRIS NOW CLEARED



SAN SEVAINE 5 SILTING IN OF PUMP INTAKE

OTHER MAINTENANCE



Mar 25,



GRATE CLEANING

San Antonio Channel at
Brooks Inlet



May 16, 2019 1:18:12 PM



ETIWANDA INLET TO
VICTORIA
GRATE REPLACED
(WELDED IN PLACE)