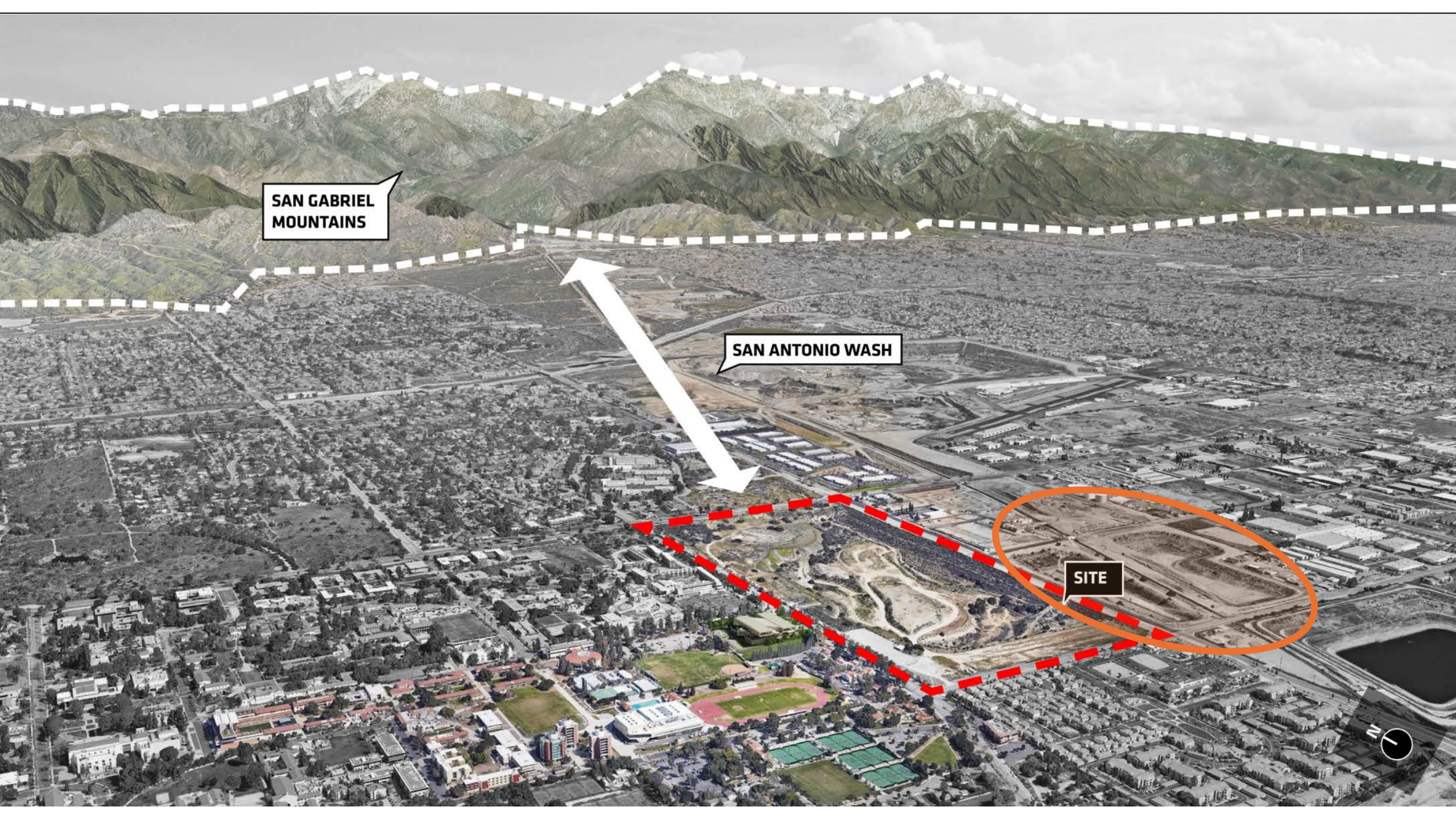


CMC Update

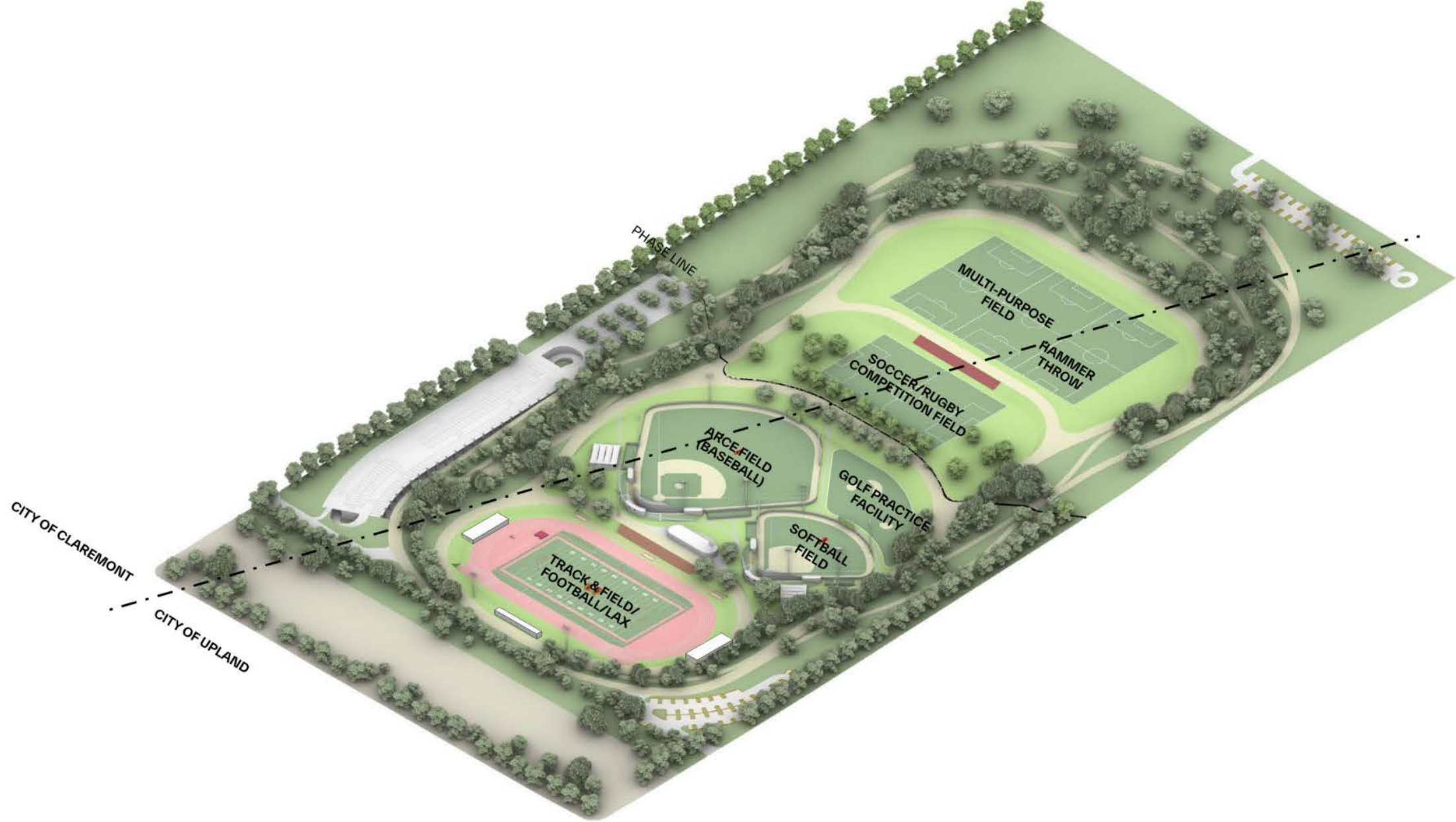


SAN GABRIEL MOUNTAINS

SAN ANTONIO WASH

SITE

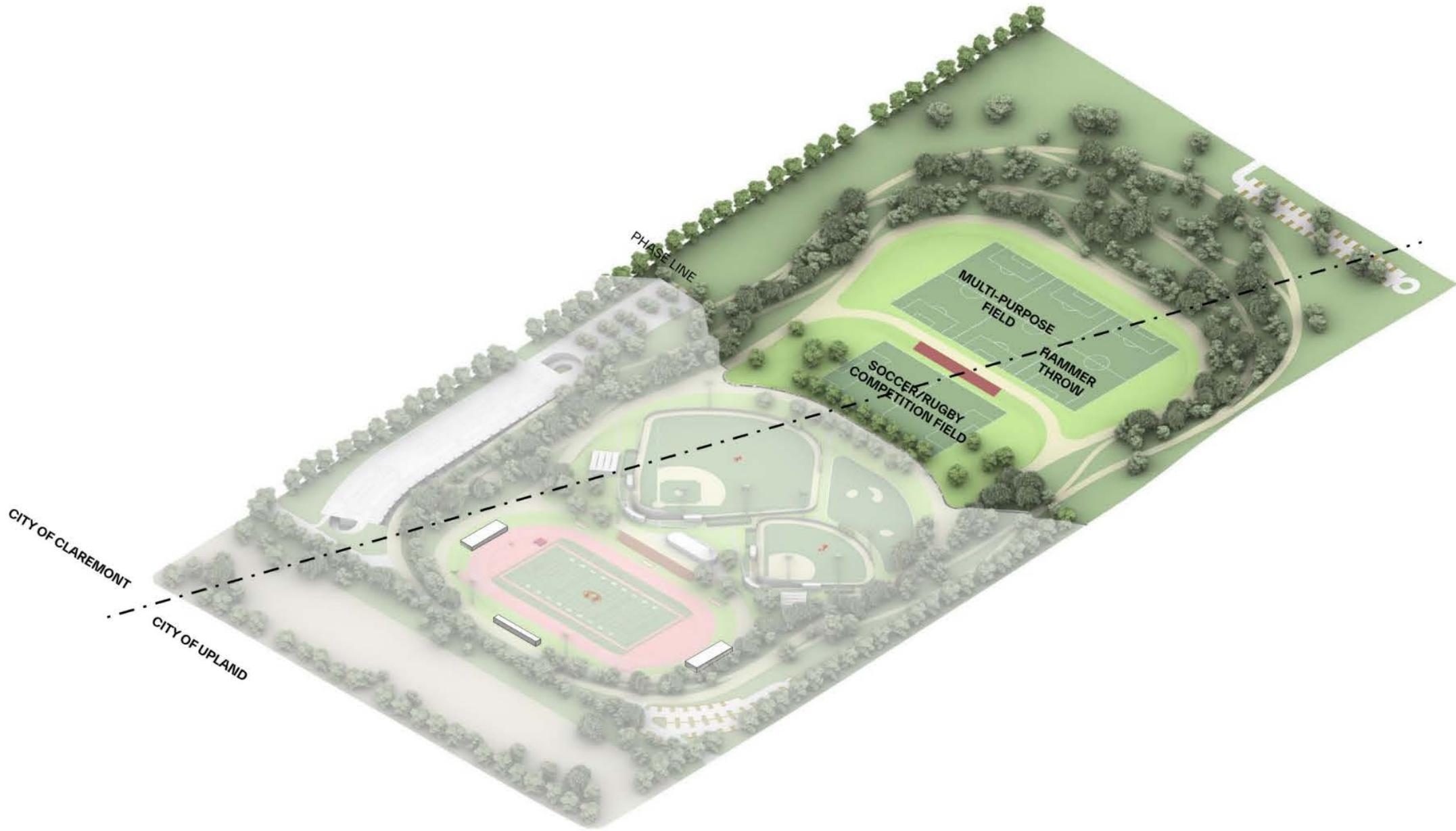




COMPLETE



PHASE 1



PHASE 2



EXISTING: FORMER GRAVEL QUARRY & LANDFILL FACILITY

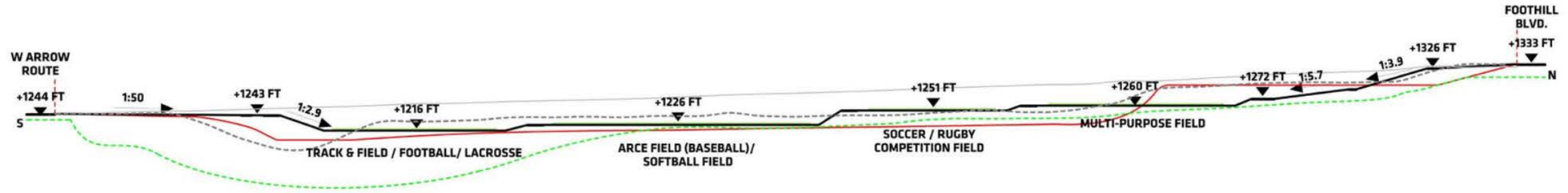


PROPOSAL: RECLAIMED RECREATIONAL SPORTS PARK

C

C

THE NEW GRADING FEATURES
FLAT TERRACES ETC.



SECTION C

- PROPOSED GRADING
- 2016 GRADING
- - - EXISTING FILL
- - - NATIVE SOIL

SECTIONS

STORMWATER MANAGEMENT STRATEGIES: DRY PONDS, BIOSWALE, AND STORM WATER STORAGE TANK



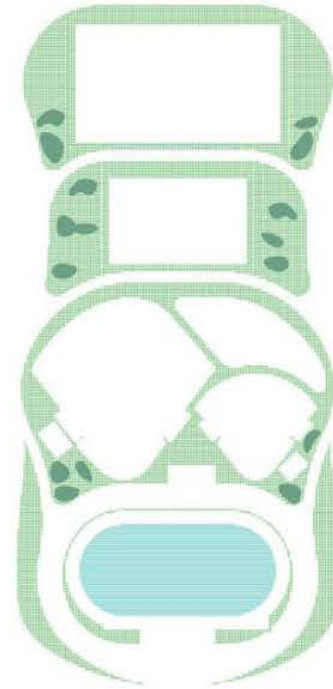
BIOSWALE AT THE BOTTOM OF THE BOWL

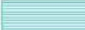

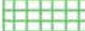


BIORETENTION/ DRY POND



BIOSWALE NEAR PARKING



-  WATER STORAGE
-  BIO-RETENTION / DRY POND
-  BIOSWALE AREAS

STORMWATER MANAGEMENT CONCEPTS

Current Stated Plan:

- Grading in **September 2024** to install storm chambers under the football field.

