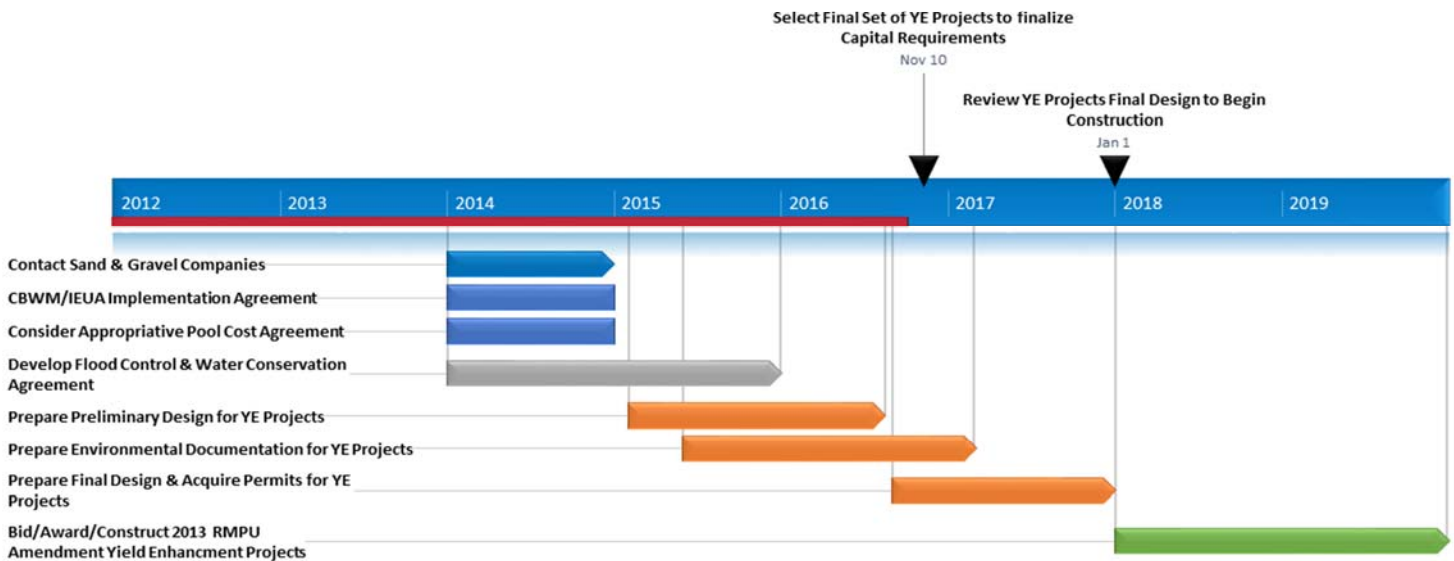


2013 Amendment to 2010 RMPU Implementation

Status Report – January 2017

Schedule:



STATUS

In April 2015, the 2013 Amendment to 2010 Recharge Master Plan update Steering Committee was merged with the IEUA/Watermaster Joint Projects Committee meeting and renamed the Recharge Investigations and Projects Committee (RIPCom), and meets monthly. This was done so that progress on all recharge projects, including prior projects, RMPU Sustainability and Yield Enhancement projects, and potential new projects could be reviewed by all Pool representatives before making a recommendation to their respective Pools. Progress on all projects are reported separately.

Year 1(2014)

Yield Enhancement Projects: Contact Sand and Gravel Companies

IEUA, with the help of Watermaster stakeholders has developed a list of haulers who may be interested in the dirt removal. Following the approval of a project's Preliminary Design Report (PDR), contact with the Sand and Gravel companies will be made. There are a few concerns to be addressed. Most companies prefer not to be tied to an IEUA/Watermaster schedule, rather, they would prefer to be driven by the needs of development-related construction projects. IEUA estimates having 12 potential companies interested in dirt hauling, however, the number may fluctuate as demands and future schedules change.

Yield Enhancement Projects: Develop Watermaster and IEUA Yield Enhancement Project Implementation Agreement

This was completed, and the Master Agreement and Task Orders have been signed by both IEUA and Watermaster Boards.

Yield Enhancement Projects: Consider AP New Yield Cost Allocation Agreement

Within the Safe Yield Reset effort, it was determined that the stormwater yield from the RMPU projects will initially be part of the New Yield allocation. The cost sharing will be based on the Operating Safe Yield percentage, with an opt-out provision that would allow Fontana Water Company the first chance at that water. Section 5.1 of the 2015 Safe Yield Reset Agreement further describes the mechanisms for accounting and allocation among the Appropriative Pool Parties. As of present, the Safe Yield Reset matter is still pending before the Court.

Yield Enhancement Projects: Develop Flood Control and Water Conservation Agreement

IEUA and Watermaster have met and exchanged correspondence with the San Bernardino County Flood Control District (SBCFCD) to expand the Four Party Agreement to include all facilities necessary for RMPU Implementation. IEUA, Watermaster, and SBCFCD have also met to discuss SBCFCD's anticipated permit conditions for the RMPU projects so that there would be minimal or no impact to the RMPU projects' scope, budget, or schedule. IEUA and Watermaster have also met with Chino Basin Water Conservation District (CBWCD) to discuss the CBWCD facilities that are involved in the RMPU Implementation. As of January 2017, negotiations are ongoing.

Yield Enhancement Projects: Agreement with Property Owners

Contact with SBCFCD and CBWCD has been made through the above-mentioned process. The Sierra Basin is no longer considered a potential project as the City of Fontana has communicated that the basin is to be repurposed in the future. The Lower San Sevaïne (PID 17) property was sold at auction; status is "ongoing due diligence by potential buyer" until May 2017. IEUA has worked with California Steel Industries (CSI) on a wastewater issue and is discussing the terms of using that recharge basin for the project contemplated in the RMPU. CSI has expressed interest in recharging the basin with stormwater, recycled water, and other sources of supplemental water. As of December 2016, discussions are ongoing.

Years 2 and 3 (2015 and 2016)

Yield Enhancement Projects: Prepare Preliminary Design of Recommended Yield Enhancement Projects

The Preliminary Design effort has been completed and was reported separately for each project. The reports have been posted on Watermaster's FTP site and also accessible at this link:

[http://www.cbwm.org/FTP/Recharge%20Investigations%20and%20Projects%20Committee%20\(RIPCom\)/Project%20PDRs/](http://www.cbwm.org/FTP/Recharge%20Investigations%20and%20Projects%20Committee%20(RIPCom)/Project%20PDRs/)

Yield Enhancement Projects: Prepare Environmental Documentation for Yield Enhancement Projects

The required environmental documents for the San Sevaine Basin RMPU Project was completed in January 2016, through an IEUA Board adoption of a mitigated negative declaration on the proposed project. The required environmental documents for Lower Day Basin RMPU Project will have a similar find and action. The IEUA Board adopted the findings on April 20, 2016. The remaining RMPU projects will be addressed separately through a programmatic environmental impact report on the proposed planning level projects within the Recharge Master Plan Update document. A report is scheduled to be completed by March 2017.

Financing Plan

The 2013 RMPU Master Plan Update Financing Plan was approved on May 26, 2016 by the Watermaster Board. The Plan is posted on Watermaster's FTP site and also accessible at this link:

[http://www.cbwm.org/FTP/Recharge%20Investigations%20and%20Projects%20Committee%20\(RIPCom\)/RMPU%20Agreements/20160512%20Financing%20Plan%20for%20the%202013%20RMPU.pdf](http://www.cbwm.org/FTP/Recharge%20Investigations%20and%20Projects%20Committee%20(RIPCom)/RMPU%20Agreements/20160512%20Financing%20Plan%20for%20the%202013%20RMPU.pdf)

Years 3 and 4(2016 and 2017)

Prepare Final Designs and Acquire Necessary Permits for Yield Enhancement

In November 2016, the Watermaster Parties selected projects to move forward for Final Design. The suite of projects are collectively identified as the Post-2014 Stormwater Recharge Projects.

Project ID	Post-2014 Stormwater Recharge Program
23a	Wineville/Jurupa/RP-3 Basins with SW Force Main Improvements
11	Victoria Basin
12	Lower Day Basin*
2	Montclair Basins
7	San Sevaine*
	<ol style="list-style-type: none"> 1. Upon receipt of bid results IEUA/CBWM are to confirm with the AP on project advancement prior to awarding the construction contracts. 2. On Project 23a, the bid for the pump station and force main will be an optional bid item.

The Final Designs for the Post-2014 Stormwater Recharge Projects are to be completed by the end of 2017. San Sevaine's design effort was completed in November 2016 while Lower Day, which is also on an accelerated schedule, will complete Final Design by April 2017.

Years 5 and 6 (2018 and 2019)

Construct 2013 RMPU Amendment Yield Enhancement Projects

Construction of the selected RMPU projects after Final Design are anticipated to be complete by the end of 2019.

Monitoring, Reporting, and Accounting Long-Term Average Net New Stormwater Recharge

The due date for the third round of requests for Water Quality Management Plan (WQMPs), Design Reports, and As-Built drawings for new projects and projects built between Fiscal Years 2011 and 2016 was November 1, 2016. As of January 2017, Watermaster is working with Wildermuth Environmental, Inc. (WEI) to analyze the data received.

Sustainability Projects:

Effort is underway. JCSD is the lead on this and is working with IEUA, the City of Ontario, MVWD, and FWC to refine sustainability project opportunities. JCSD began receiving water from the City of Ontario in April 2015 per the Ontario-Jurupa In Lieu Sustainability Project Agreement. With this agreement, JCSD will receive 2,000 acre-feet of the City of Ontario's CDA allotment of water in exchange for the purchase of an equal quantity of imported water from the WFA plant for use by the City of Ontario. JCSD is also exploring other sources of imported water beyond Metropolitan Water District to diversify its water source portfolio.

The joint Vulcan/ FWC project at the Vulcan Recharge Basin anticipated recharge in the Basin in early September 2015, however, due to some logistical issues it was delayed until December 21, 2015. In February 2016, Vulcan/FWC completed its 100 acre-foot recharge project. The exact amount recharged was 100.006 acre feet. Further recharge is not anticipated until the winter of 2017.