

Draft Table 1
Summary of Compliance with Section 5 of the 2013 Amendment to the 2010 RMPU
for Projects Constructed during Fiscal Year 2011 to 2016

Appropriator	Number of Projects	Drainage Area (acres)	MS4 Projects that Utilize Infiltration Features for MS4 Compliance ⁵				Confirmed Approval Date	Confirmed Construction Date	Confirmed Maintenance
			Number of Projects	Drainage Area (acres)	Design Capture Volume ⁶ (af)	Reconnaissance Estimate of Stormwater Recharge under Idealized Conditions ⁷ (afy)			
All MS4 Projects Submitted to Watermaster									
Chino, City of	18	890	5	445	24	98	11	3	0
Chino Hills, City of ¹	0	0	0	0	0	0	0	0	0
Ontario, City of	38	396	35	376	32	83	24	13	16
Pomona, City of ²	28	144	16	100	5	22	4	0	0
Upland, City of	6	23	5	23	1	5	1	5	0
CVWD ²	0	0	0	0	0	0	0	0	0
FWC	60	584	46	501	45	110	48	0	0
JCSD	18	879	10	472	14	104	1	3	0
MMWC	1	3	0	0	0	0	0	1	1
MVWD	12	59	7	27	2	6	12	11	0
Riverside County ^{3,4}	0	0	0	0	0	0	0	0	0
San Bernardino County	6	10	2	7	1	2	0	0	0
SAWCo ¹	0	0	0	0	0	0	0	0	0
Total	187	2,988	126	1,951	124	428	101	36	17
Submitted MS4 Projects within the Chino Basin									
Chino, City of	18	890	5	445	24	98	11	3	0
Chino Hills, City of ¹	0	0	0	0	0	0	0	0	0
Ontario, City of	38	396	35	376	32	83	24	13	16
Pomona, City of ²	12	61	10	55	3	13	2	0	0
Upland, City of	6	23	5	23	1	5	1	5	0
CVWD ²	0	0	0	0	0	0	0	0	0
FWC	53	394	39	328	28	72	44	0	0
JCSD	18	556	10	472	14	104	1	0	0
MMWC	1	3	0	0	0	0	0	1	1
MVWD ³	12	59	7	27	2	6	12	11	0
Riverside County ^{4,5}	0	0	0	0	0	0	0	0	0
San Bernardino County	6	9	2	7	1	2	0	0	0
SAWCo ¹	0	0	0	0	0	0	0	0	0
Total	164	2,391	113	1,733	105	381	95	33	17

Notes:

CVWD: Cucamonga Valley Water District

FWC: Fontana Water Company

JCSD: Jurupa Company Services District

MMWC: Marygold Mutual Water Company

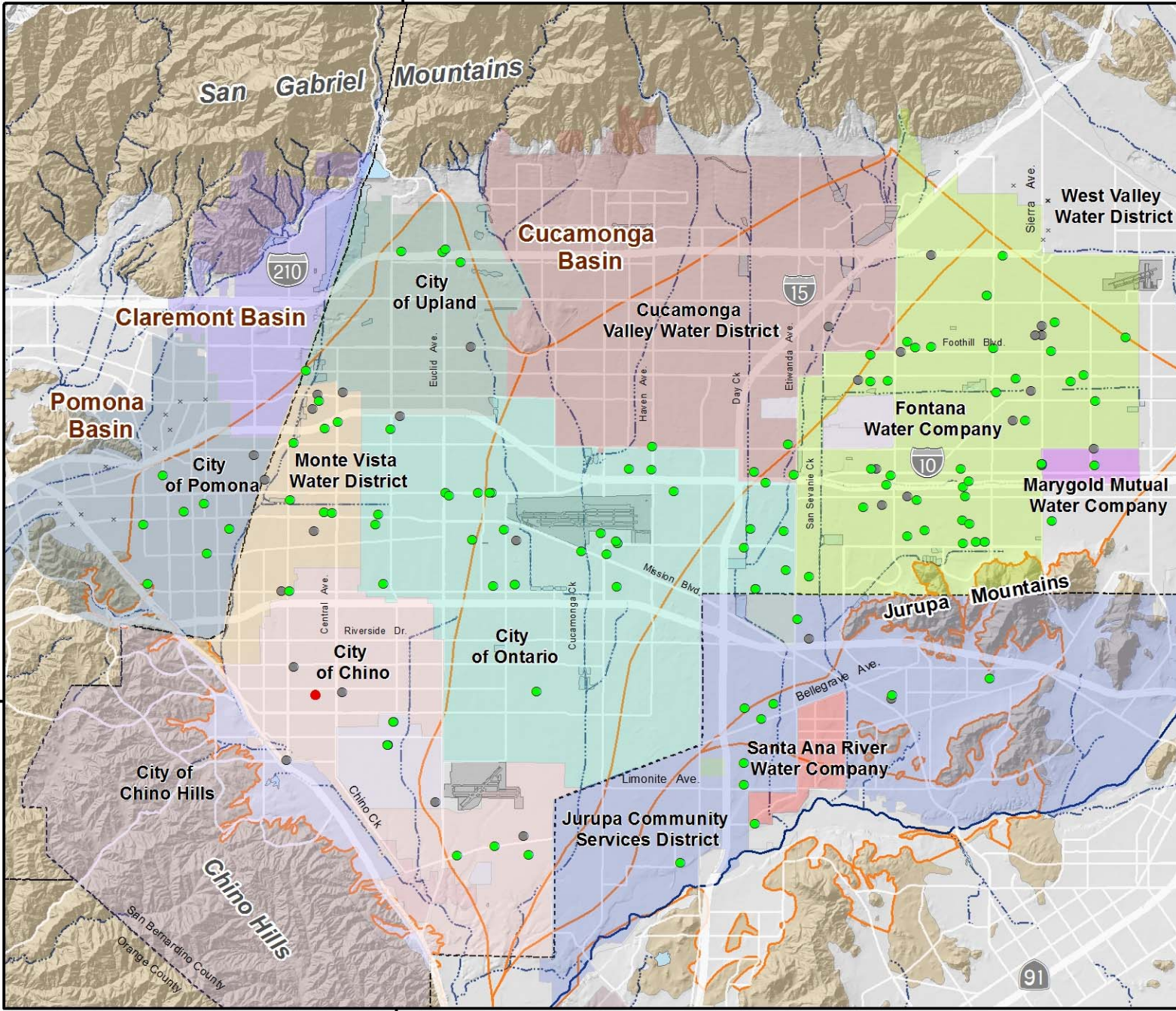
MVWD: Monte Vista Water District

SAWCo: San Antonio Water Company

1. Not required to comply to the court order because their service area is mostly located outside of the Chino Basin boundary.
2. CVWD has communicated with Watermaster to inform them that they are in communication with the City of Rancho Cucamonga and their data collection is in process.
3. Riverside County provided a GIS database showing Riverside County's drainage facilities within the Chino Basin which include all the drainage facilities, not just MS4 facilities. The County informed Watermaster that they do not have specific data on MS4 projects and that Watermaster should request MS4 data from the cities within the County.
4. Riverside and San Bernardino Counties prepare an annual report that includes a database of all MS4 projects within their jurisdiction. These databases were reviewed and compared to the data submitted to Watermaster. A review of the databases suggests that Watermaster has received only a subset of MS4 projects for each of the land-use agencies. Watermaster cannot use these databases because these do not contain the information required to estimate stormwater recharge.
5. Infiltration features could include offsite recharge basin, infiltration basin, infiltration trench, infiltration pit, underground infiltration, drywell, gravel bedding infiltration, and bioretention with no underdrain.
6. For San Bernardino County and Riverside County, design capture volume (DCV) is the volume of storm water runoff resulting from the 85th percentile, 24-hr storm event that the designed infiltration feature is constructed to capture. For LA County, DCV is (1) the 0.75-inch, 24-hour storm event, or (2) the 85th percentile, 24-hour storm event, whichever one is greater.
7. Estimated based on assuming that all projects are similar to the Chino Fire Station No. 1 and Training Center MS4 project evaluated in Section 5 of the 2013 Amendment to the 2010 RMPU. Since the majority of MS4 projects submitted to the Watermaster are north of the Station, this estimate is conservatively low. Idealized conditions mean that the facility performs as it was designed and that maintenance is performed to ensure project performs as originally designed.



117°40'0"W



MS4 Compliance Through:

- Infiltration Features
Infiltration features could include offsite recharge basin, infiltration basin, infiltration trench, infiltration pit, underground infiltration, drywell, gravel bedding infiltration, and bioretention with no underdrain.
- Non-Infiltration Features
Non-infiltration features could include pervious pavement, vegetated swale, and retention basin, and biotreatment.
- × MS4 Project Outside of Chino Basin Boundary
- Chino Fire Station No. 1
See Footnote 9 in Table 1

- OBMP Management Zones
- Streams & Flood Control Channels
- Flood Control & Conservation Basins

Geology

- Quaternary Alluvium
- Undifferentiated Pre-Tertiary to Early Pleistocene Igneous, Metamorphic, and Sedimentary Rocks



33°59'59"N

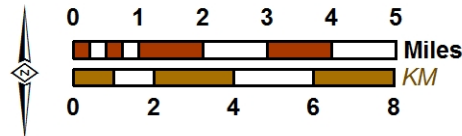
33°59'59"N

117°40'0"W

Produced by:



Author: SO
 Date: 9/14/2017
 Document Name: MS4_CB



**MS4 Projects Submitted to Watermaster
 FY 2011-2016**