



**POST 2014 STORMWATER RECHARGE PROGRAM  
PROJECT NOS. RW15003.00/.01/.02/.03/.04/.05/.06 & RW15004.00  
STATUS UPDATE: JULY 8, 2021**

“Post 2014 Stormwater Recharge Program” recommended for final design, bid and construction:

PID	Basin Projects	Post 2014 Stormwater Recharge Program <sup>(2)</sup>	Initial Yield		Updated Yield <sup>(1)</sup>	
			SW	RW	SW	RW
			acre-feet per year			
12	Lower Day Basin	Increase stormwater diversion and basin storage	789	-	993	-
11	Victoria Basin	Improve the infiltration rate and increase storage by removing settled deposits	43	120	75	120
2	Montclair Basins	Increase storage and recharge capacity by directing more channel flow	248	-	96	-
18a	CSI Basin <sup>(3)</sup>	New storage and recharge facility by deepening basin	81	-	-	-
23a	Wineville, Jurupa, RP3 & Force Main	Improve storage and recharge capacity with pumps/conveyance systems between basins and provide new diversion structures	3,166	2,905	2,921	2,905
<b>Total</b>			<b>4,327</b>	<b>3,025</b>	<b>4,085</b>	<b>3,025</b>

- (1) Updated to reflect new values as calculated after the completion of the PDR.
- (2) San Sevaine Basin Improvement project is a part of the “Post 2014 Stormwater Recharge Program” but it is not listed here for it has its own status update sheet.
- (3) 18a (CSI) removed from the list of ongoing RMPU projects. Yield value of 100 AFY is removed.

**Project Budget:**

Project Budget  
\$23,016,080

Actual Cost to Date  
\$8,088,552

	RMPU Projects	Total Project Cost	Actual Cost (to date)	
Ongoing Projects	Lower Day Basin (PID 12)	\$4,008,000	\$3,753,533	
	Victoria Basin (PID 11)	\$176,072	\$176,072	
	Montclair Basins (PID 2)	\$1,788,100	\$292,420	
	RP-3 Basin <sup>(7)</sup>	(23a)	\$1,819,300	\$1,084,224
	Wineville Basin <sup>(7)</sup>		\$20,220,952	\$2,221,295
	Jurupa Basin <sup>(7)</sup>			
	Wineville/Jurupa Force Main <sup>(7)</sup>			
Deferred Projects	East Declaz (Non RMPU Project)	\$114,000	\$114,000	
	Declaz Basin (PID 27)	\$105,000	\$105,000	
	Turner Basin (PID 14)	\$42,000	\$42,000	
	Ely Basin (PID 15a)	\$236,000	\$236,000	
	CSI Basin (PID 18a)	\$64,008	\$64,008	
<b>Total</b>		<b>\$28,573,432</b>	<b>\$8,088,552</b>	

### Cost Sharing Documents:

<b>Lower Day Basin – PID 12 (Task Order No. 2)</b>	
Watermaster's Share	\$2,883,000
IEUA's Share	\$0
Grant Funding	\$1,125,000
<b>Sub-Total</b>	<b>\$4,008,000</b>
<b>Victoria Basin – PID 11 (Task Order No. 10)<sup>(4)</sup></b>	
Watermaster's Share	\$88,036
IEUA's Share	\$88,036
<b>Sub-Total</b>	<b>\$176,072</b>
<b>Montclair Basin – PID 2 (Task Order No. 11)</b>	
Watermaster's Share	\$1,788,100
IEUA's Share	\$0
<b>Sub-Total</b>	<b>\$1,788,100</b>
<b>Wineville/Jurupa/RP3/Force Main – PID 23a (Task Order No. 9)<sup>(5)</sup></b>	
Watermaster's Share	\$10,846,828
IEUA's Share	\$360,043
Grants	\$10,833,381
<b>Sub-Total</b>	<b>\$22,040,252</b>
<b>East Declz/Declz – PID 27 /Turner – PID 27/Ely PID – 15a (Task Order No.1)</b>	
Watermaster's Share	\$497,000
IEUA's Share	\$0
<b>Sub-Total</b>	<b>\$497,000</b>
<b>CSI Basin (Task Order 12)</b>	
Watermaster's Share	\$64,008
IEUA's Share	\$0
<b>Sub-Total</b>	<b>\$64,008</b>
<b>Total</b>	<b>\$28,573,432</b>

(4) Amending TO 10 to reflect the total project cost from the projected cost of \$168,800 to the final cost of \$176,072.

(5) Includes RP-3, Wineville, Jurupa, and Wineville-Jurupa Force Main's total projected costs. Task Order amended in May/June 2021 to reflect current project cost and additional grants.

### Grant/Loan Update:

RMPU Projects	Total Project Cost	Funding Program	Grant Amount
Lower Day Basin (PID 12)	\$4,008,000	Grant Prop. 84 DWR/SAWPA	\$750,000
		USBR	\$375,000
Victoria Basin (PID 11)	\$168,800	-none-	
Montclair Basins (PID 2)	\$1,788,100	SRF Loan	
RP-3 Basin <sup>(7)</sup>	\$1,819,300	SWRCB – Stormwater	\$809,214
		USBR	\$290,000
Wineville/Jurupa /Force Main <sup>(7)</sup>	\$20,220,952	SWRCB – Stormwater	\$8,994,167
		2018 Water Smart Drought	\$740,000
<b>Total</b>	<b>\$28,005,153</b>		<b>\$11,958,381</b>

(6) Task Order No. 9 amended in May/June 2021 to reflect current project cost and additional grants.

## Project Update:

1) The following are updates to each of the on-going RMPU projects:

- a) **Victoria Basin** – Project completed.
- b) **Wineville/Jurupa Storm Water Distribution Pipeline** – April 8, 2021, six (6) bids were received where MNR Construction, Inc., was the lowest apparent bidder with a bid price of \$15,480,880. Bids ranged from the mentioned lowest to a high of \$24.9 million; and the three lowest were near to each other by 3-percent. These bids were above the engineer's estimate.

The higher bid prices are attributed to supply and demand issues caused by the current COVID-19 pandemic. The shortages of some supplies have resulted in record cost growth for materials such as steel and lumber. The pandemic has also affected the industry's health and safety, material delays and fluctuating material prices. In consideration of these conditions, IEUA and the engineering team found the bids to reasonable and fair.

On May 27, 2021, Watermaster's Board approved the first amendment to Task Order No. 9 to reflect changes to the project cost and additional grants. IEUA's Board finalized the amendment on June 16 and authorized the construction contract with MNR.

In addition to the construction effort, \$60,000 in mitigation efforts will be implemented as part of a permit condition to offset the project's impact within the Wineville Basin's wetland areas.

- c) **Montclair Basin** – Continuing to address the extended wait for a permit with US Army Corps. The Corps recently requested and received an additional permit application for the project to cover the Section 404 requirements. This additional permitting document will further delay the project construction bidding (see separate project schedule in the scheduling tables).
- d) **Lower Day Basin** – Construction is substantially complete. IEUA is coordinating with the contractor to finalize the following remaining tasks:
  - Provide the final components to have SCE provide utility power to the new improvements.
  - Address minor programming updates to the control gates to meet current programming requirements.
  - Replace a section of the gate lifting rod. Field conditions required 12-inches more to properly connect to the gate actuator.
  - Replace an incorrectly designed gate actuator. The control motor and signal wires were incorrectly specified. IEUA is ordering the required replacement parts.
- e) **RP-3 Basin Improvement** –
  - a) Demo work completed.
  - b) Excavation completed.
  - c) The remaining Basin Improvement at RP-3 was awarded in May 2021.

**Schedules:****Wineville/Jurupa/Force main (PID 23a):**

<u>Phases</u>	<u>Start</u>	<u>Finish</u>	<u>Status</u>
Project Development	07/01/14	12/17/14	Completed
Preliminary Design	12/18/14	06/21/17	Completed
Environmental	12/18/14	12/31/17	Completed
Permits	06/22/17	01/12/21	Completed
Design	12/18/14	02/28/20	Completed
Bid and Award	01/12/21	06/16/21	Completed
Construction	06/16/21	08/30/22	In Progress

**Montclair Basin (PID 2):**

<u>Phases</u>	<u>Start</u>	<u>Finish</u>	<u>Status</u>
Project Development	07/01/14	12/17/14	Completed
Preliminary Design	12/18/14	06/21/17	Completed
Environmental	12/18/14	12/31/17	Completed
Permits	06/22/17	07/28/21	In Progress
Design	12/18/14	02/28/20	Completed
Bid and Award	07/28/21	11/17/21	Not Started
Construction	11/17/21	11/31/22	Not Started

**Lower Day (PID 12):**

<u>Phases</u>	<u>Start</u>	<u>Finish</u>	<u>Status</u>
Project Development	07/01/14	12/17/14	Completed
Preliminary Design	12/18/14	06/21/17	Completed
Environmental	12/18/14	12/31/17	Completed
Permits	06/22/17	07/19/19	Completed
Design	12/18/14	07/19/19	Completed
Bid and Award	07/19/19	12/11/19	Completed
Construction	12/11/19	09/11/21	In Progress

**RP-3 Basin (PID 23a):**

<u>Phases</u>	<u>Start</u>	<u>Finish</u>	<u>Status</u>
Project Development	07/01/14	12/17/14	Completed
Preliminary Design	12/18/14	06/21/17	Completed
Environmental	12/18/14	12/31/17	Completed
Permits	06/22/17	01/09/18	Completed
Design	12/18/14	12/14/17	Completed
Bid and Award	01/10/18	06/20/18	Completed
Construction	06/21/18	12/31/21	In Progress

Photographs:

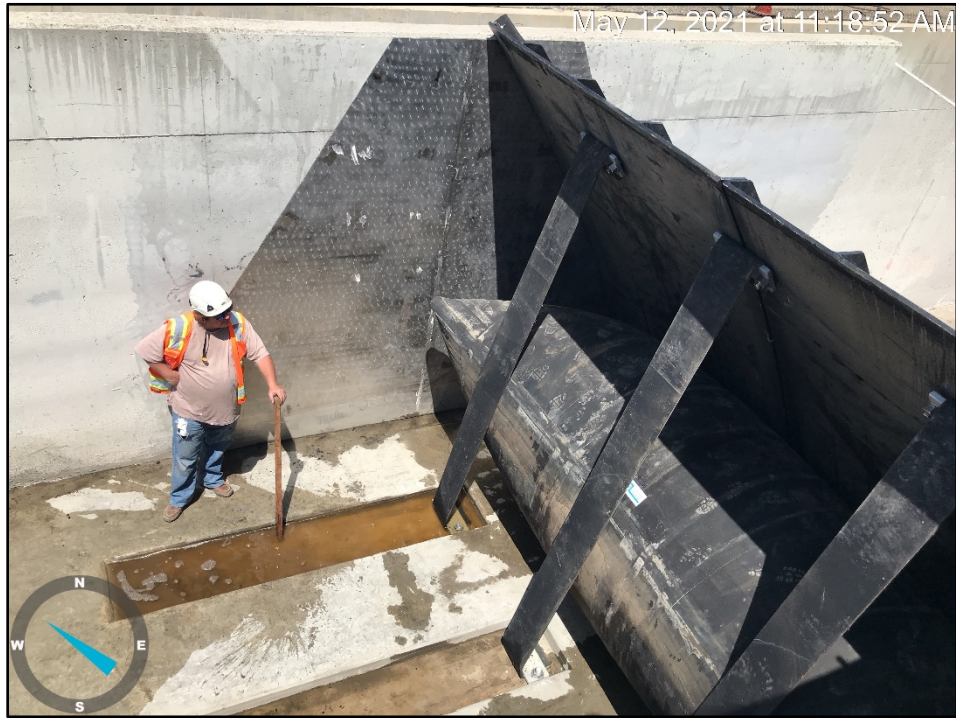


**Lower Day – New Catwalk for Cell 3**



**Lower Day – New Catwalk for Cell 3**





**Lower Day's Main Channel – New Stormwater Diversion Gate**



**Lower Day's Main Channel – New Stormwater Diversion Gate**