



**POST 2014 STORMWATER RECHARGE PROGRAM
PROJECT NOS. RW15003.00/.01/.02/.03/.04/.05/.06 & RW15004.00
STATUS UPDATE: OCTOBER 10, 2023**

“Post 2014 Stormwater Recharge Program” recommended for final design, bid and construction:

PID	Basin Projects	Post 2014 Stormwater Recharge Program ⁽²⁾	Initial Yield		Updated Yield ⁽¹⁾	
			SW	RW	SW	RW
			acre-feet per year			
12	Lower Day Basin	Increase stormwater diversion and basin storage	789	-	993	-
11	Victoria Basin	Improve the infiltration rate and increase storage by removing settled deposits	43	120	75	120
2	Montclair Basins	Increase storage and recharge capacity by directing more channel flow	248	-	96	-
18a	CSI Basin ⁽³⁾	New storage and recharge facility by deepening basin	81	-	-	-
23a	Wineville, Jurupa, RP3 & Force Main	Improve storage and recharge capacity with pumps/conveyance systems between basins and provide new diversion structures	3,166	2,905	2,921	2,905
Total			4,327	3,025	4,085	3,025

- (1) Updated to reflect new values as calculated after the completion of the PDR.
- (2) San Sevaine Basin Improvement project is a part of the “Post 2014 Stormwater Recharge Program” but it is not listed here for it has its own status update sheet.
- (3) 18a (CSI) removed from the list of ongoing RMPU projects. Yield value of 100 AFY is removed.

Project Budget:

Project Budget
\$31,829,520

Actual Cost to Date
\$23,677,237

	RMPU Projects	Total Project Cost	Actual Cost (to date)	
Ongoing Projects	Lower Day Basin (PID 12)	\$4,008,000	\$4,003,407	
	Victoria Basin (PID 11)	\$176,072	\$176,072	
	Montclair Basins (PID 2)	\$1,788,100	\$460,651	
	RP-3 Basin ⁽⁴⁾	\$23,477,040	\$1,819,300	\$2,307,031
	Wineville Basin ⁽⁴⁾		\$19,433,271	
	Jurupa Basin ⁽⁴⁾			
	Wineville/Jurupa Force Main ⁽⁴⁾			
Deferred Projects	East Decléz (Non RMPU Project)	\$114,000	\$114,000	
	Decléz Basin (PID 27)	\$105,000	\$105,000	
	Turner Basin (PID 14)	\$42,000	\$42,000	
	Ely Basin (PID 15a)	\$236,000	\$236,000	
	CSI Basin (PID 18a)	\$64,008	\$64,008	
Total		\$31,829,520	\$26,941,440	

Cost Sharing Documents:

Lower Day Basin – PID 12 (Task Order No. 2)	
Watermaster’s Share	\$2,883,000
IEUA’s Share	\$0
Grant Funding	\$1,125,000
Sub-Total	\$4,008,000
Victoria Basin – PID 11 (Task Order No. 10)⁽⁵⁾	
Watermaster’s Share	\$88,036
IEUA’s Share	\$88,036
Sub-Total	\$176,072
Montclair Basin – PID 2 (Task Order No. 11)	
Watermaster’s Share	\$1,788,100
IEUA’s Share	\$0
Sub-Total	\$1,788,100
Wineville/Jurupa/RP3/Force Main – PID 23a (Task Order No. 9)⁽⁶⁾	
Watermaster’s Share	\$14,102,916
IEUA’s Share	\$360,043
Grants	\$10,833,381
Sub-Total	\$25,296,340
East Declz/Declz – PID 27 /Turner – PID 27/Ely PID – 15a (Task Order No.1)	
Watermaster’s Share	\$497,000
IEUA’s Share	\$0
Sub-Total	\$497,000
CSI Basin (Task Order 12)	
Watermaster’s Share	\$64,008
IEUA’s Share	\$0
Sub-Total	\$64,008
Total	\$31,829,520

(4) Task Order No. 9 amended in May/June 2021 to reflect current project cost.

(5) Amending TO 10 to reflect the total project cost from the projected cost of \$168,800 to the final cost of \$176,072.

(6) Includes RP-3, Wineville, Jurupa, and Wineville-Jurupa Force Main’s total projected costs. Task Order Amendment 2 in Aug/Sep 2022 to reflect revised total project budget due to additional construction cost.

Grant/Loan Update:

RMPU Projects	Total Project Cost	Funding Program	Grant Amount
Lower Day Basin (PID 12)	\$4,008,000	Grant Prop. 84 DWR/SAWPA	\$750,000
		USBR	\$375,000
Victoria Basin (PID 11)	\$168,800	-none-	
Montclair Basins (PID 2)	\$1,788,100	SRF Loan	
RP-3 Basin ⁽⁷⁾	\$1,819,300	SWRCB – Stormwater	\$809,214
		USBR	\$290,000
Wineville/Jurupa /Force Main ⁽⁷⁾	\$20,220,952	SWRCB – Stormwater	\$8,994,167
		2018 Water Smart Drought	\$740,000
Total	\$28,005,153		\$11,958,381

(7) Task Order No. 9 amended in May/June 2021 to reflect added grants.

Project Update:

The following are updates to each of the on-going RMPU projects:

- a) **Victoria Basin** – Project completed.

- b) **Wineville/Jurupa Storm Water Distribution Pipeline** – In late June, the General Contractor completed the installation of the new 30-inch stormwater piping along the Jurupa Road/Street in Ontario and Fontana. Between July and August, the Contractor completed the remaining work for the pipeline by restoring the asphalt road along the east bound lanes of Jurupa Road/Street. They are currently making the final piping connection to Jurupa Basin by placing the last pipes under the San Sevaine Channel. As noted in previous updates, the construction activities within the Wineville Basin area were delayed due rain and wet conditions from the January through March with heavy rain on August 20 and 21. MNR has been actively working in Wineville since late March to add walls and roofing for the new pump station and rubber dam control rooms. Also, electrical upgrades in Jurupa started on September 5. A temporary electrical generator was added to help maintain minimal power onsite for the existing facility’s controls and communication systems. Southern California Edison (SCE) plans to upgrade the power system at Jurupa as part the Project by October or November. Unfortunately, the electrical work with SCE at Wineville Basin continues to be excessively delayed because of limited resources within SCE. SCE has not provided final approved plans to install the new electrical source at Wineville. This is expected to delay the contract work concerning electrical and final testing. IEUA staff is coordinating with SCE to request they expedite their response. Also, MNR is delayed in providing approved pumps for the new improvement. IEUA is working with MNR and its supplier to finalize the submittal for the new pumps to ensure they meet design conditions and to minimize a later construction completion date. The delays with the pumps will extend final project completion. These two delays are expected to extend the construction end date to possibly October 2024.

During this period, the “value engineering” proposal to claim potential cost savings on the construction of the new diversion structure at Jurupa Basin started construction on September 18, 2023. This “value engineering” proposed a smaller construction activity at the channel by maintaining a similar flow diversion rate than the initial construction plans. Evaluations by IEUA do confirm MNR’s claim by verifying the plans through a computer flow model. On August 17th the Advisory Committee gave conditional approval to proceed with the cost savings if the project did not lose more than half of the expected diversion flow and held a cost savings of \$100K. On September 2, IEUA confirmed this with Watermaster. The construction of the new Diversion is substantially completed as of this reporting and the final pipeline connection at Jurupa is in progress by the cost saving effort of jack and bore under the San Sevaine Channel.

The major construction of the Wineville/Jurupa/Distribution System is approximately 80% complete. However, with the ongoing delays with SCE and the Pumps, the project continues to hold at 75% of the construction schedule.

- c) **Montclair Basin** – As previously reported, IEUA was considering using 3-Dimensional Computational Fluid Dynamics to determine if a smaller diversion construction would be more beneficial in terms of cost savings and minimizing the impact to the channel. This consideration is still being discussed with the project stakeholders; however, the project was put on hold due to recent flow activities to the channel and basin areas. This year’s rains have given opportunities to take available water from Metropolitan Water District (MWD) for groundwater storage. So, the proposed recharge improvement is on hold for this year to allow IEUA and Chino Basin Watermaster to convey and capture available water from MWD for groundwater recharge. The nearby San Antonia Creek channel and the Montclair Basin are actively a part of the program to move available water through a channel and stored within a basin. The program is expected to run to this year only. When nearing completion, IEUA plans to start bid and construction as noted schedule below.
- d) **Lower Day Basin** – As previously reported, the major delay in finalizing the improvement was due to Southern California Edison not providing the required power source to operate the new improvements and ongoing communication issues with the site network system. With power now available on site and IEUA’s recent completion of the maintenance repair to the site’s communication system, IEUA is now finalizing the system integration at the new improvements. This will allow Ground Water Recharge to fully operate the new improvements remotely and locally.
- e) **RP-3 Basin Improvement** –
- a) Demo work completed/Excavation completed. Construction of the Diversion Structure is completed. However, IEUA is addressing a potential delay claim of \$260,000 due to extended project scheduled when addressing the unforeseen field conditions with the contract work. IEUA is currently reviewing the Contractor’s time impact analysis.

Wineville/Jurupa/Force main (PID 23a):

<u>Phases</u>	<u>Start</u>	<u>Finish</u>	<u>Status</u>
Project Development	07/01/14	12/17/14	Completed
Preliminary Design	12/18/14	06/21/17	Completed
Environmental	12/18/14	12/31/17	Completed
Permits	06/22/17	01/12/21	Completed
Design	12/18/14	02/28/20	Completed
Bid and Award	01/12/21	06/16/21	Completed
Construction	06/16/21	03/30/24	In Progress

Montclair Basin (PID 2):

<u>Phases</u>	<u>Start</u>	<u>Finish</u>	<u>Status</u>
Project Development	07/01/14	12/17/14	Completed
Preliminary Design	12/18/14	06/21/17	Completed

Environmental	12/18/14	12/31/17	Completed
Permits	06/22/17	01/30/23	In Progress
Design	12/18/14	02/28/20	Completed
Bid and Award	11/01/23	01/17/24	Not Started
Construction	01/18/24	12/31/25	Not Started

Lower Day (PID 12):

<u>Phases</u>	<u>Start</u>	<u>Finish</u>	<u>Status</u>
Project Development	07/01/14	12/17/14	Completed
Preliminary Design	12/18/14	06/21/17	Completed
Environmental	12/18/14	12/31/17	Completed
Permits	06/22/17	07/19/19	Completed
Design	12/18/14	07/19/19	Completed
Bid and Award	07/19/19	12/11/19	Completed
Construction/Close Out	12/11/19	12/31/23	In Progress

RP-3 Basin (PID 23a):

<u>Phases</u>	<u>Start</u>	<u>Finish</u>	<u>Status</u>
Project Development	07/01/14	12/17/14	Completed
Preliminary Design	12/18/14	06/21/17	Completed
Environmental	12/18/14	12/31/17	Completed
Permits	06/22/17	01/09/18	Completed
Design	12/18/14	12/14/17	Completed
Bid and Award	01/10/18	06/20/18	Completed
Construction	06/21/18	11/31/23	In Progress



Wineville Basin – Pump Station Building North Side
(Completed Wall – Joist Beam Installation)



Wineville Basin – Pump Station Building South Side
(Joist Beam Installation)



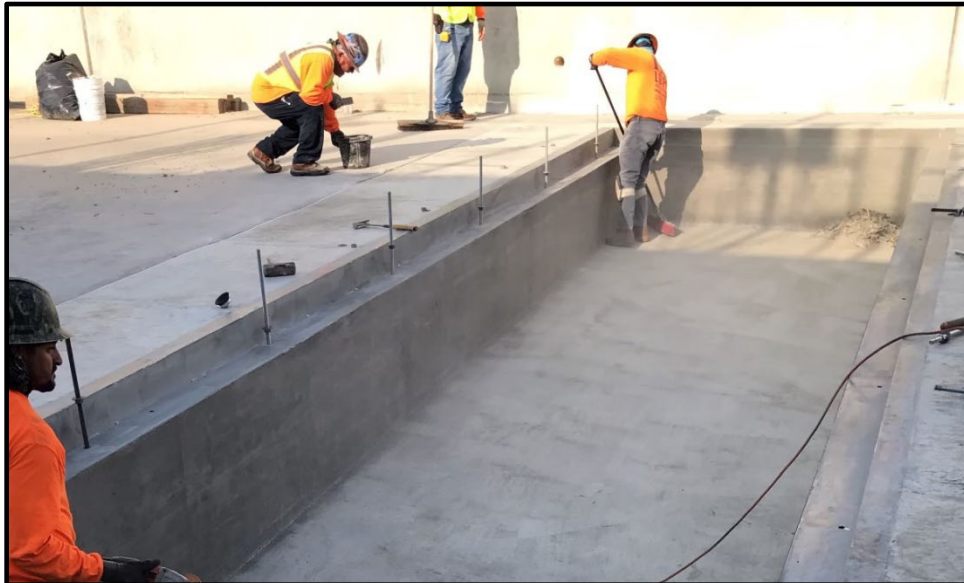
Wineville Basin – Rubber Dam Control Building
(Completed CMU Wall – Pending Roofing Materials)



Wineville Basin – Pump Station
(Joist Beams)



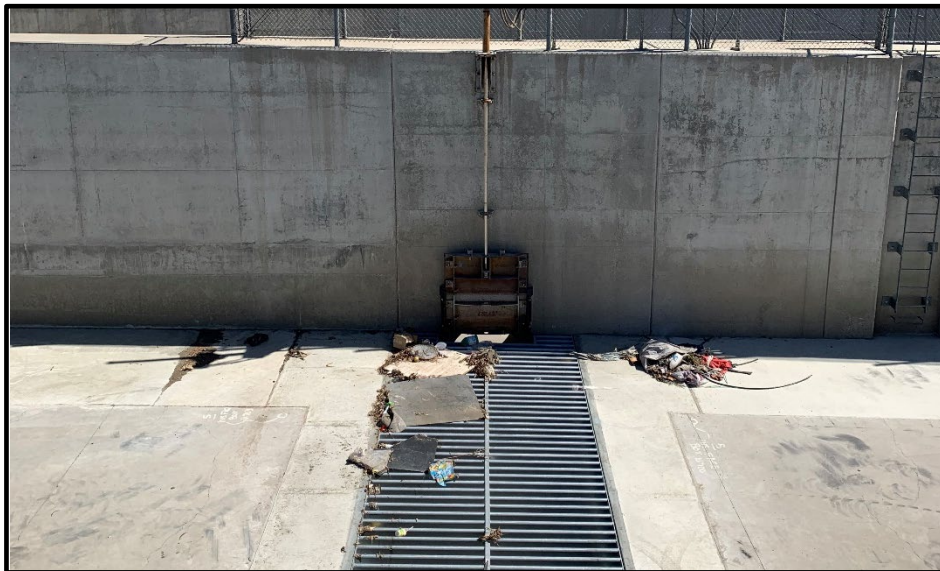
Jurupa Basin Improvement – Channel Diversion
(Concrete work)



Jurupa Basin Improvement – Channel Diversion
(Concrete Work Continues)



Jurupa Basin Improvement - Channel Diversion
(Completed Concrete Work)



Jurupa Basin Improvement - Channel Diversion
(Completion of New Diversion Structure)



Lower Day Basin Improvement – Day Creek Diversion
(Test Operation of the Gate Dam System – Main Channel)



Lower Day Basin Improvement – Day Creek Diversion
(Test Operation of Gate Dam System – Onto Diversion Channel)