



**POST 2014 STORMWATER RECHARGE PROGRAM
PROJECT NOS. RW15003.00/.01/.02/.03/.04/.05/.06 & RW15004.00
STATUS UPDATE: APRIL 10, 2024**

“Post 2014 Stormwater Recharge Program” recommended for final design, bid and construction:

PID	Basin Projects	Post 2014 Stormwater Recharge Program ⁽²⁾	Initial Yield		Updated Yield ⁽¹⁾	
			SW	RW	SW	RW
			acre-feet per year			
12	Lower Day Basin	Increase stormwater diversion and basin storage	789	-	993	-
11	Victoria Basin	Improve the infiltration rate and increase storage by removing settled deposits	43	120	75	120
2	Montclair Basins	Increase storage and recharge capacity by directing more channel flow	248	-	96	-
18a	CSI Basin ⁽³⁾	New storage and recharge facility by deepening basin	81	-	-	-
23a	Wineville, Jurupa, RP3 & Force Main	Improve storage and recharge capacity with pumps/conveyance systems between basins and provide new diversion structures	3,166	2,905	2,921	2,905
Total			4,327	3,025	4,085	3,025

- (1) Updated to reflect new values as calculated after the completion of the PDR.
- (2) San Sevaine Basin Improvement project is a part of the “Post 2014 Stormwater Recharge Program” but it is not listed here for it has its own status update sheet.
- (3) 18a (CSI) removed from the list of ongoing RMPU projects. Yield value of 100 AFY is removed.

Project Budget:

Project Budget
\$31,829,520

Actual Cost to Date
\$28,683,468

	RMPU Projects	Total Project Cost	Actual Cost (to date)	
Ongoing Projects	Lower Day Basin (PID 12)	\$4,008,000	\$4,014,957	
	Victoria Basin (PID 11)	\$176,072	\$176,072	
	Montclair Basins (PID 2)	\$1,788,100	\$473,052	
	RP-3 Basin ⁽⁴⁾	\$22,683,844	\$2,612,496	\$2,385,723
	Wineville Basin ⁽⁴⁾		\$21,072,656	
	Jurupa Basin ⁽⁴⁾			
	Wineville/Jurupa Force Main ⁽⁴⁾			
Deferred Projects	East Decléz (Non RMPU Project)	\$114,000	\$114,000	
	Decléz Basin (PID 27)	\$105,000	\$105,000	
	Turner Basin (PID 14)	\$42,000	\$42,000	
	Ely Basin (PID 15a)	\$236,000	\$236,000	
	CSI Basin (PID 18a)	\$64,008	\$64,008	
Total		\$31,829,520	\$28,683,468	

Cost Sharing Documents:

Lower Day Basin – PID 12 (Task Order No. 2)	
Watermaster’s Share	\$2,883,000
IEUA’s Share	\$0
Grant Funding	\$1,125,000
Sub-Total	\$4,008,000
Victoria Basin – PID 11 (Task Order No. 10)⁽⁵⁾	
Watermaster’s Share	\$88,036
IEUA’s Share	\$88,036
Sub-Total	\$176,072
Montclair Basin – PID 2 (Task Order No. 11)	
Watermaster’s Share	\$1,788,100
IEUA’s Share	\$0
Sub-Total	\$1,788,100
Wineville/Jurupa/RP3/Force Main – PID 23a (Task Order No. 9)⁽⁶⁾	
Watermaster’s Share	\$14,102,916
IEUA’s Share	\$360,043
Grants	\$10,833,381
Sub-Total	\$25,296,340
East Declaz/Declaz – PID 27 /Turner – PID 27/Ely PID – 15a (Task Order No.1)	
Watermaster’s Share	\$497,000
IEUA’s Share	\$0
Sub-Total	\$497,000
CSI Basin (Task Order 12)	
Watermaster’s Share	\$64,008
IEUA’s Share	\$0
Sub-Total	\$64,008
Total	\$31,829,520

(4) Task Order No. 9 was amended in May/June 2021 to reflect current project cost.

(5) Amending TO 10 to reflect the total project cost from the projected cost of \$168,800 to the final cost of \$176,072.

(6) Includes RP-3, Wineville, Jurupa, and Wineville-Jurupa Force Main’s total projected costs. Task Order Amendment 2 in Aug/Sep 2022 to reflect revised total project budget due to additional construction cost.

Grant/Loan Update:

RMPU Projects	Total Project Cost	Funding Program	Grant Amount
Lower Day Basin (PID 12)	\$4,008,000	Grant Prop. 84 DWR/SAWPA	\$750,000
		USBR	\$375,000
Victoria Basin (PID 11)	\$168,800	-none-	
Montclair Basins (PID 2)	\$1,788,100	SRF Loan	
RP-3 Basin ⁽⁷⁾	\$1,819,300	SWRCB – Stormwater	\$809,214
		USBR	\$290,000
Wineville/Jurupa /Force Main ⁽⁷⁾	\$20,220,952	SWRCB – Stormwater	\$8,994,167
		2018 Water Smart Drought	\$740,000
Total	\$28,005,153		\$11,958,381

(7) Task Order No. 9 was amended in May/June 2021 to reflect added grants.

Project Update:

The following are updates to each of the on-going RMPU projects:

- a) **Victoria Basin** – Project completed.
- b) **Wineville/Jurupa Storm Water Distribution Pipeline** –

Noted construction issues:

- Permit delay with Fish and Wildlife – Aug. 2021
- Utility conflicts along Jurupa Road/Street, conflicts required pipeline adjustments and changes to means and methods – Jan. 2022
- Conflict with existing Storm drain discharge found within the forebay, needed grading plan changes – Jan. 2022
- RP3 Basin Delays due to utility conflicts – Jan. 2022
- Changes to rubber dam “auto deflate” control mechanism, required designing new system and programming – Nov. 2022
- The project has experienced delays due to adverse weather conditions, particularly an unusually high amount of rain events. Construction activities within the Wineville Basin area had to be put on hold due to the rain and wet condition – Mar. 2023
- Pump Submittals delayed by Contractor, submittal not meeting project requirements – Aug. 2023
- Delays with Southern California Edison, late responses in providing electrical connections – Oct. 2023

Impacts to Project:

- Delayed project completion to Jul. 2025 to Dec. 2025
- Rebidding of the Pumps to others (three to four months for bidding)
- Increased project costs (projected below):

INCREASED COSTS	ADDITIONAL COST	REVISED BUDGET
<i>RP3 Basin Improvements</i>	\$833,196	\$2,652,496
<i>Wineville Basin Improvements PID23a (7690.36) (Task No. 9)</i>		\$ 6,203,320
<i>Jurupa Basin Improvements PID23a (7690.36) (Task No. 9)</i>	\$2,450,000	\$ 2,461,965
<i>Wineville/Jurupa Force Main PID 23a (7690.36) (Task No. 9)</i>		\$17,262,757
TOTAL	\$3,283,196	\$28,579,538

The major construction of the Wineville/Jurupa/Distribution System is approximately 80% complete. However, with the ongoing delays with SCE and the Pumps, the project continues to hold at 75% of the construction schedule.

- c) **Montclair Basin** –Last year’s rains have given opportunities to take available water from Metropolitan Water District (MWD) for groundwater storage. So, the proposed recharge

improvement was on hold for that year to allow IEUA and Chino Basin Watermaster to convey and capture available water from MWD for groundwater recharge. The nearby San Antonia Creek channel and the Montclair Basin are actively a part of the program to move available water through a channel and stored within a basin. IEUA plans to start bid and construction as noted schedule below.

- d) **Lower Day Basin** – Project is completed. Due to communication conflicts with existing controls, the system integration was delayed final completion. IEUA is finalizing the system integration with the Contractor. This will allow Ground Water Recharge to fully operate the new improvements remotely and locally.

- e) **RP-3 Basin Improvement** – Demo work completed/Excavation completed. Construction of the Diversion Structure is completed. IEUA is addressed a potential delay claim of \$260,000 due to extended project scheduled by negotiation the cost to \$176,501. The Contractor is requesting compensation with extended overhead costs due to the added construction period. After a careful review of the TIA by IEUA staff and CAPO (project scheduler), the analysis is found to be acceptable, and the negotiated compensation of \$176,501 is fair and reasonable.

Wineville/Jurupa/Force main (PID 23a):

<u>Phases</u>	<u>Start</u>	<u>Finish</u>	<u>Status</u>
Project Development	07/01/14	12/17/14	Completed
Preliminary Design	12/18/14	06/21/17	Completed
Environmental	12/18/14	12/31/17	Completed
Permits	06/22/17	01/12/21	Completed
Design	12/18/14	02/28/20	Completed
Bid and Award	01/12/21	06/16/21	Completed
Construction	06/16/21	12/31/25	In Progress

Montclair Basin (PID 2):

<u>Phases</u>	<u>Start</u>	<u>Finish</u>	<u>Status</u>
Project Development	07/01/14	12/17/14	Completed
Preliminary Design	12/18/14	06/21/17	Completed
Environmental	12/18/14	12/31/17	Completed
Permits	06/22/17	01/30/23	Completed
Design	12/18/14	02/28/20	Completed
Bid and Award	05/31/24	08/21/24	Not Started
Construction	08/31/24	10/31/25	Not Started

Lower Day (PID 12):

<u>Phases</u>	<u>Start</u>	<u>Finish</u>	<u>Status</u>
Project Development	07/01/14	12/17/14	Completed
Preliminary Design	12/18/14	06/21/17	Completed
Environmental	12/18/14	12/31/17	Completed
Permits	06/22/17	07/19/19	Completed
Design	12/18/14	07/19/19	Completed
Bid and Award	07/19/19	12/11/19	Completed
Construction/Close Out	12/11/19	12/31/23	Completed

RP-3 Basin (PID 23a):

<u>Phases</u>	<u>Start</u>	<u>Finish</u>	<u>Status</u>
Project Development	07/01/14	12/17/14	Completed
Preliminary Design	12/18/14	06/21/17	Completed
Environmental	12/18/14	12/31/17	Completed
Permits	06/22/17	01/09/18	Completed
Design	12/18/14	12/14/17	Completed
Bid and Award	01/10/18	06/20/18	Completed
Construction	06/21/18	11/31/23	Completed



Wineville Basin – Rubber Dam Building
(Completed Building Structure)



Wineville Basin – New Gate holding water before the Forebay Area
(Completed Gate)



Wineville Basin – New Concrete to Forebay
(Completed Spillway with New Gate)



Jan 9, 2024 at 12:29:59 PM
5101-5141 E Francis St
Ontario CA 91761
United States

Wineville Basin – Pump Station
(Completed Building)



Network: Dec 1, 2023 at 10:42:15 AM PST
Local: Dec 1, 2023 at 10:42:15 AM PST
N 34° 2' 31.889", W 117° 32' 47.224"
25° NF

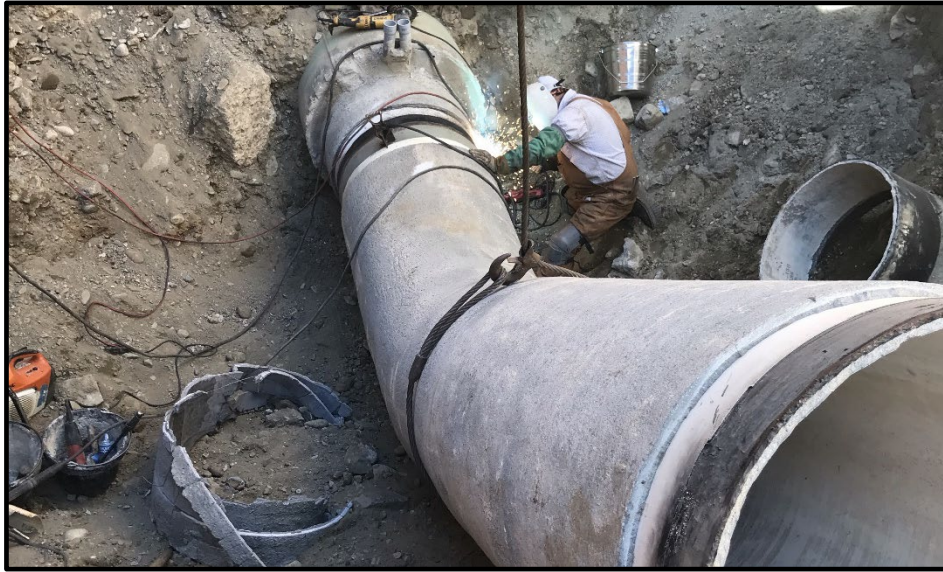
Wineville Basin Improvement – Outlet Diversion Structure
(Installation of new Gate)



Wineville Basin Improvement – New Gate before the Forebay
(Completed gate installation)



Wineville Basin Improvement – Basin
(Completed Concrete Work in Basin)



Jurupa Basin Improvement - Channel Diversion
(Welding of New Piping into Jurupa)



Lower Day Basin Improvement – Day Creek Diversion
(Test Operation of the Gate Dam System – Main Channel)



Lower Day Basin Improvement – Day Creek Diversion
(Test Operation of Gate Dam System – Onto Diversion Channel)