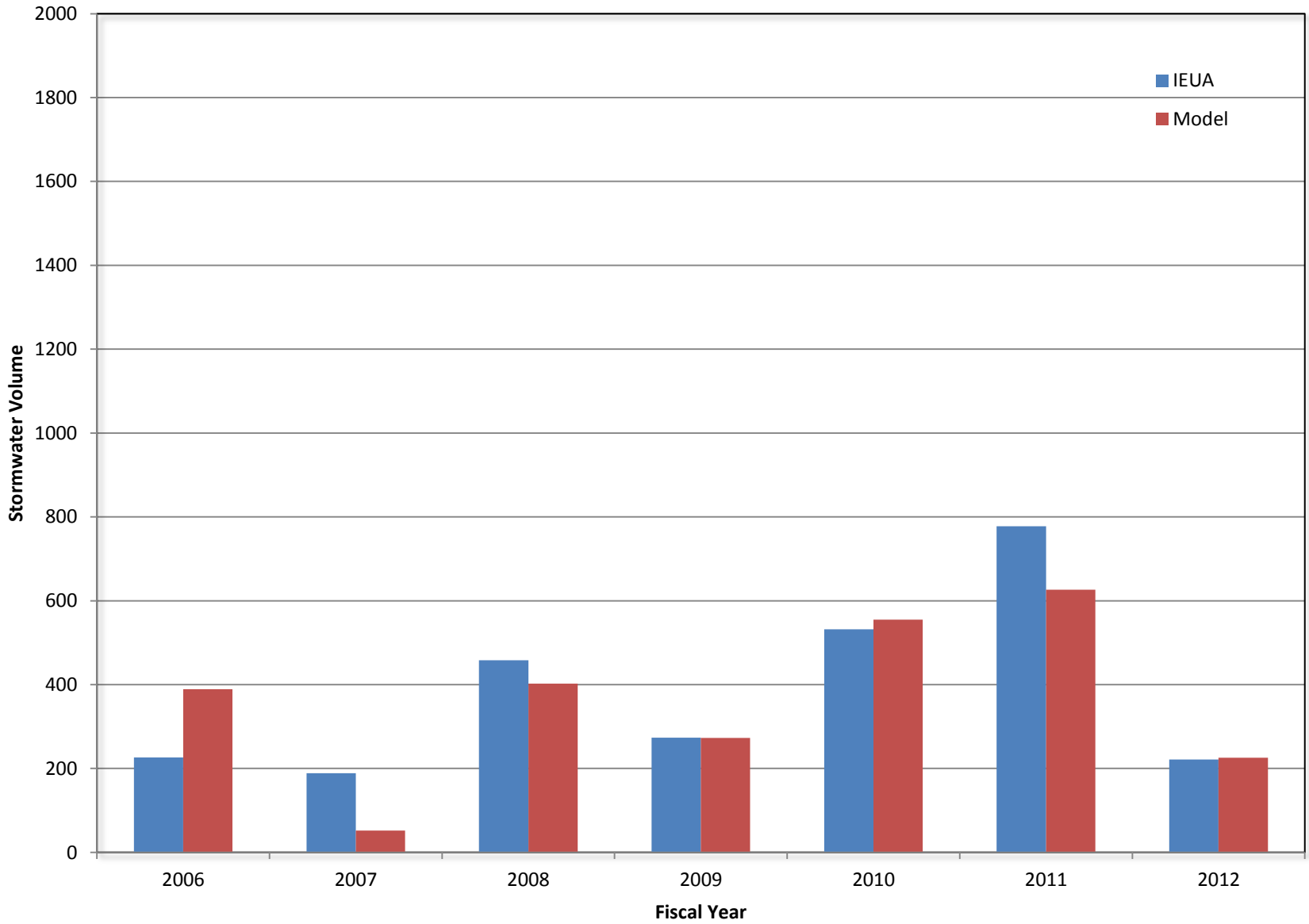


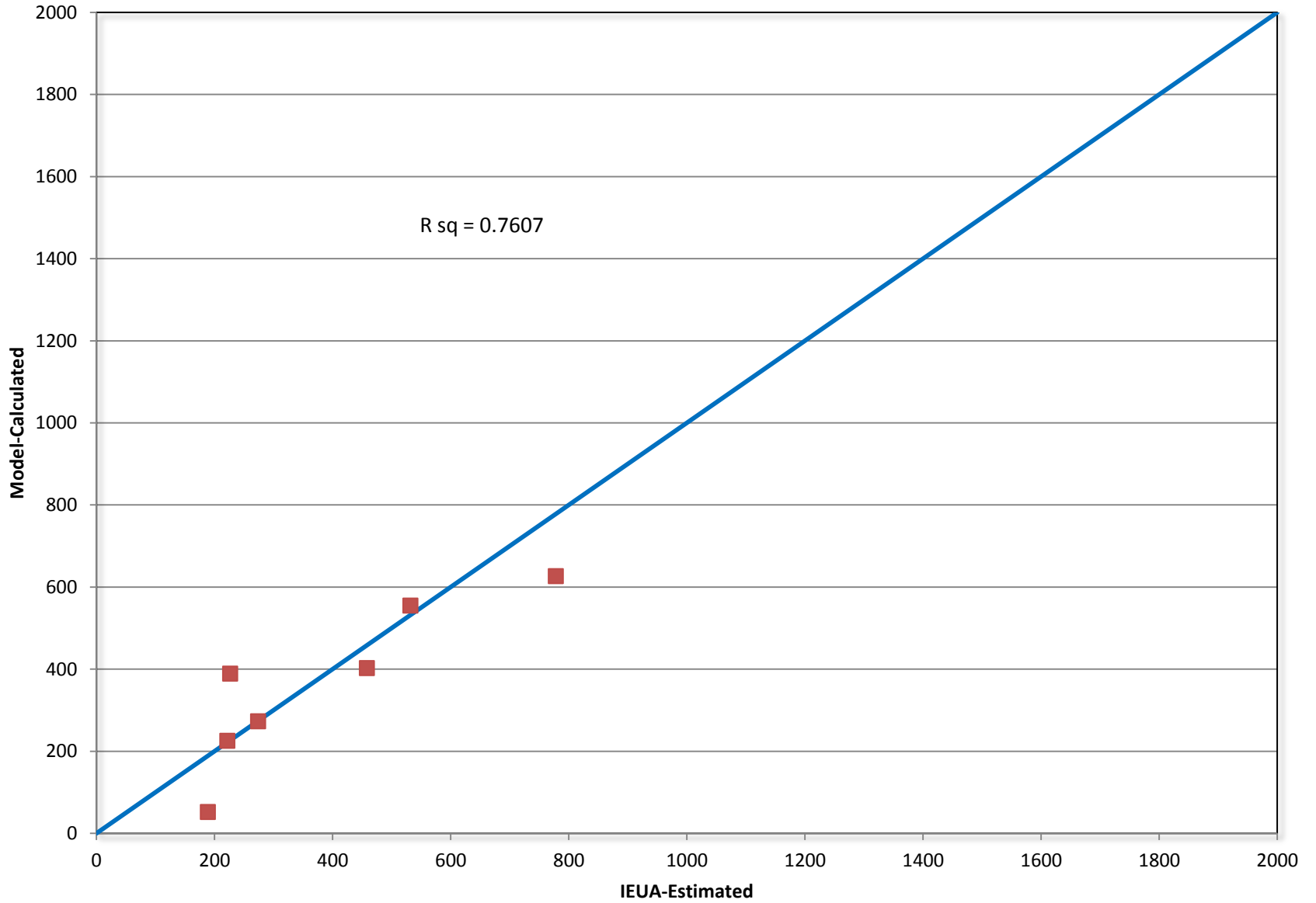
# Comparison Of Model-Calculated Recharge Volume Versus IEUA's Capture Volume

Upland Basin



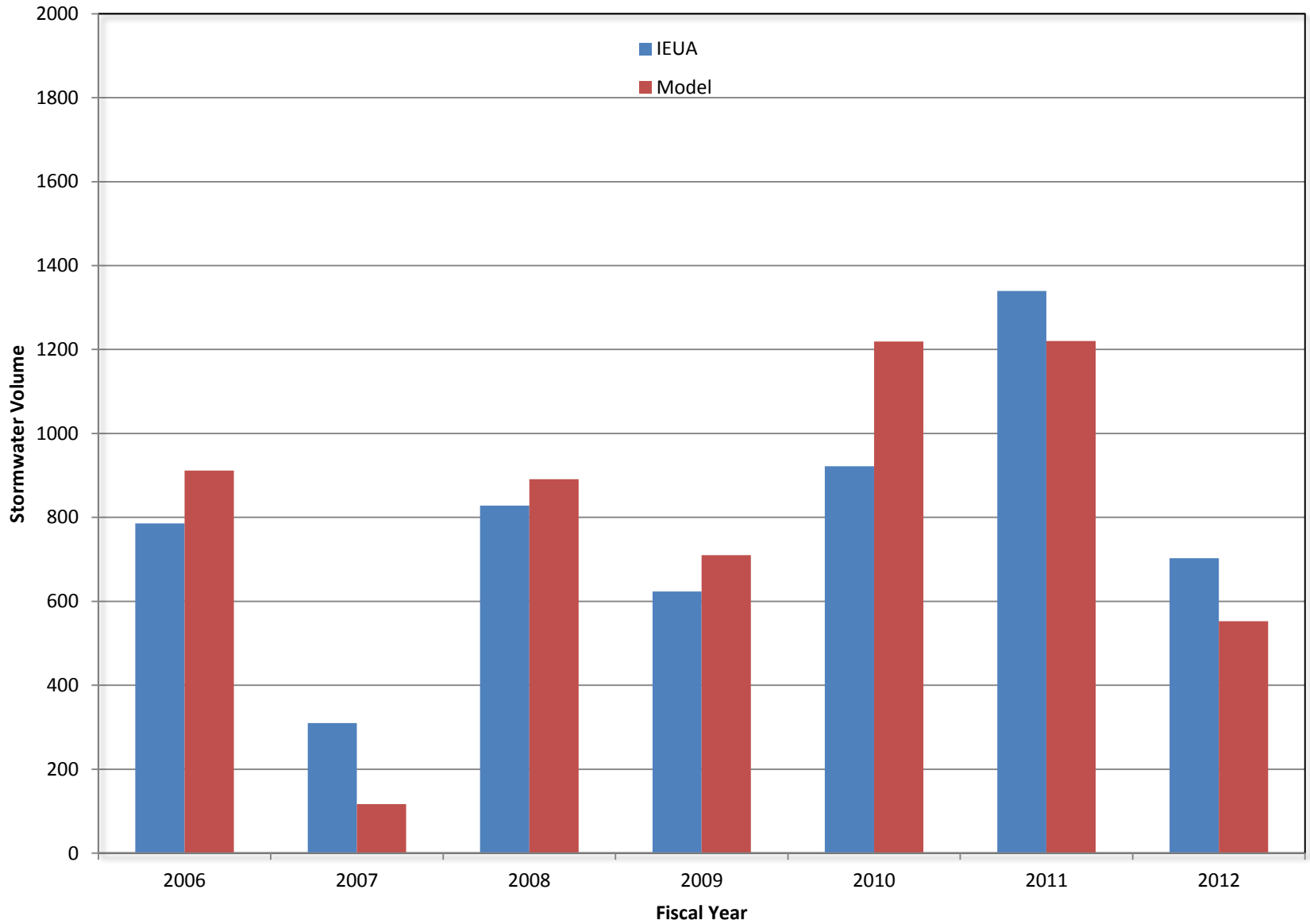
# Comparison Of Model-Calculated Recharge Volume Versus IEUA's Capture Volume

Upland Basin



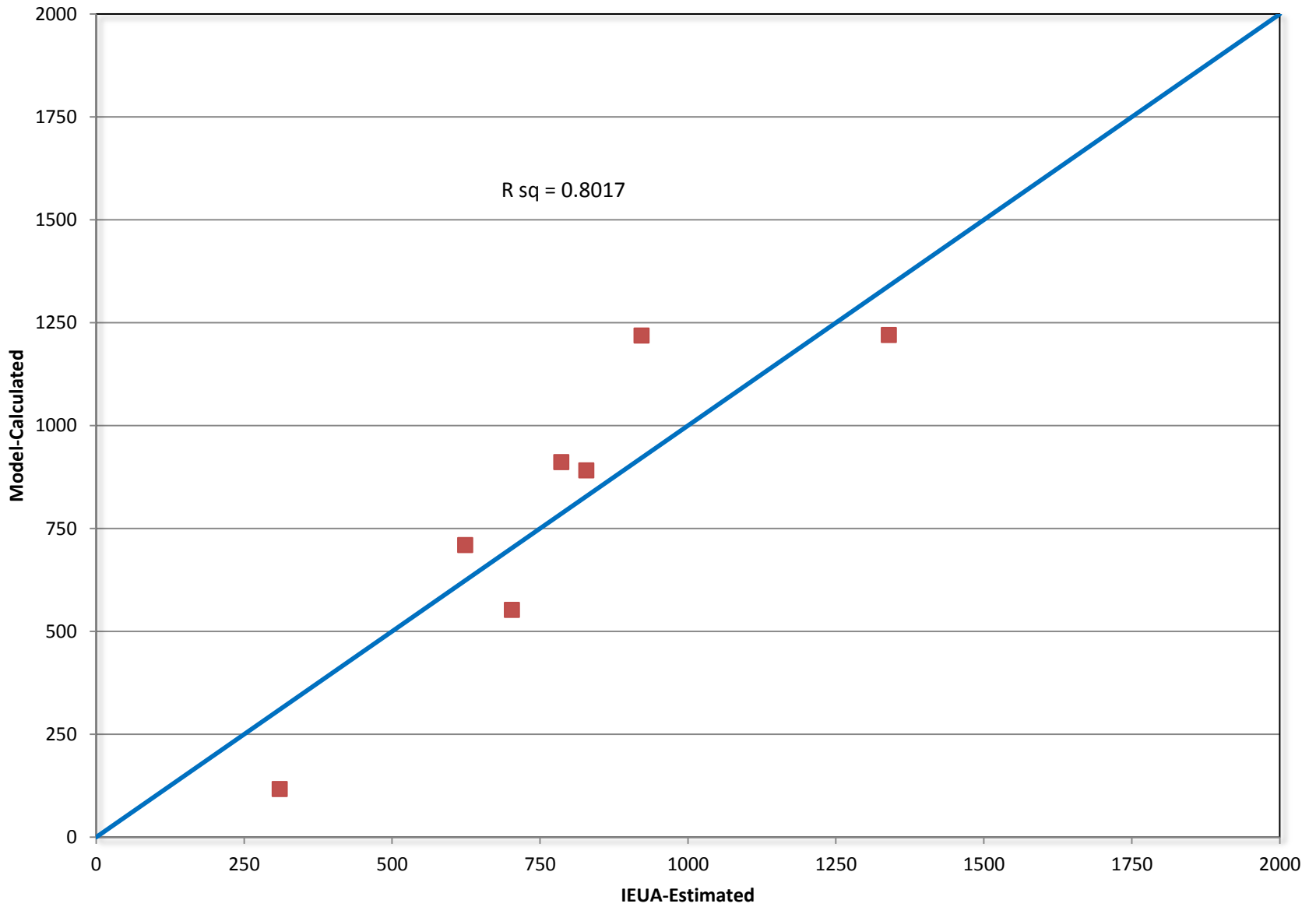
# Comparison Of Model-Calculated Recharge Volume Versus IEUA's Capture Volume

Montclair Basins



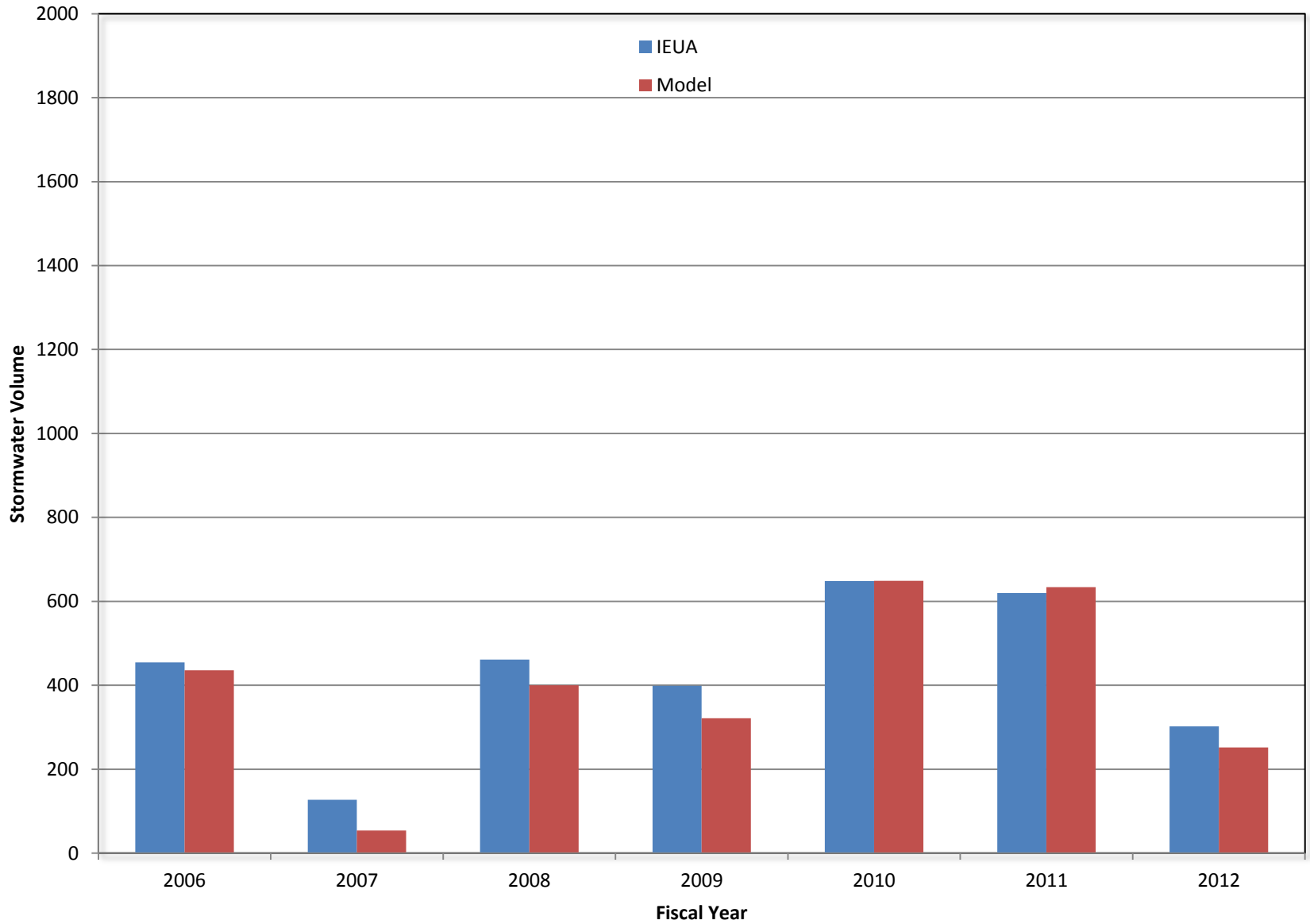
# Comparison Of Model-Calculated Recharge Volume Versus IEUA's Capture Volume

Montclair Basins



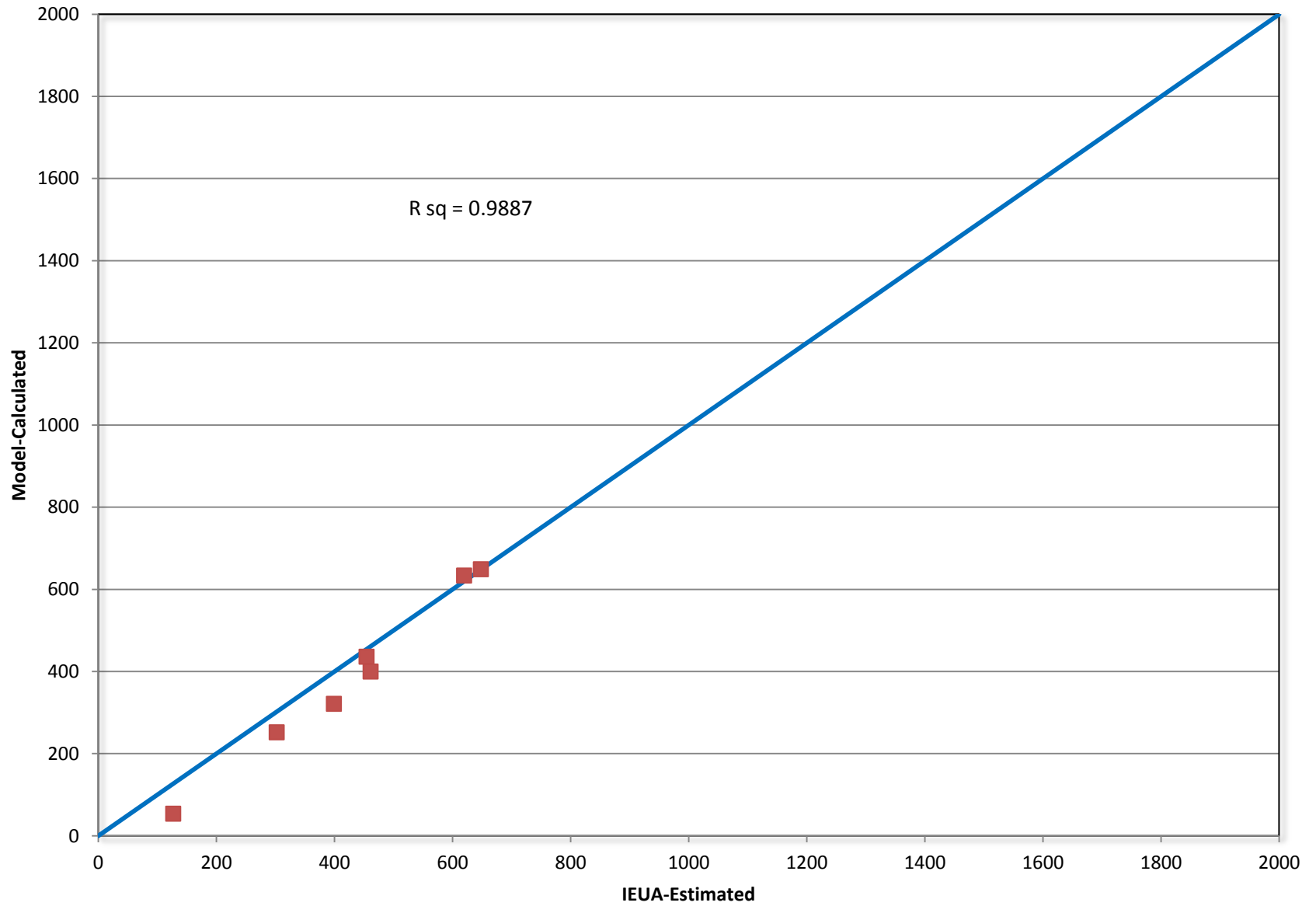
# Comparison Of Model-Calculated Recharge Volume Versus IEUA's Capture Volume

Brooks Basin



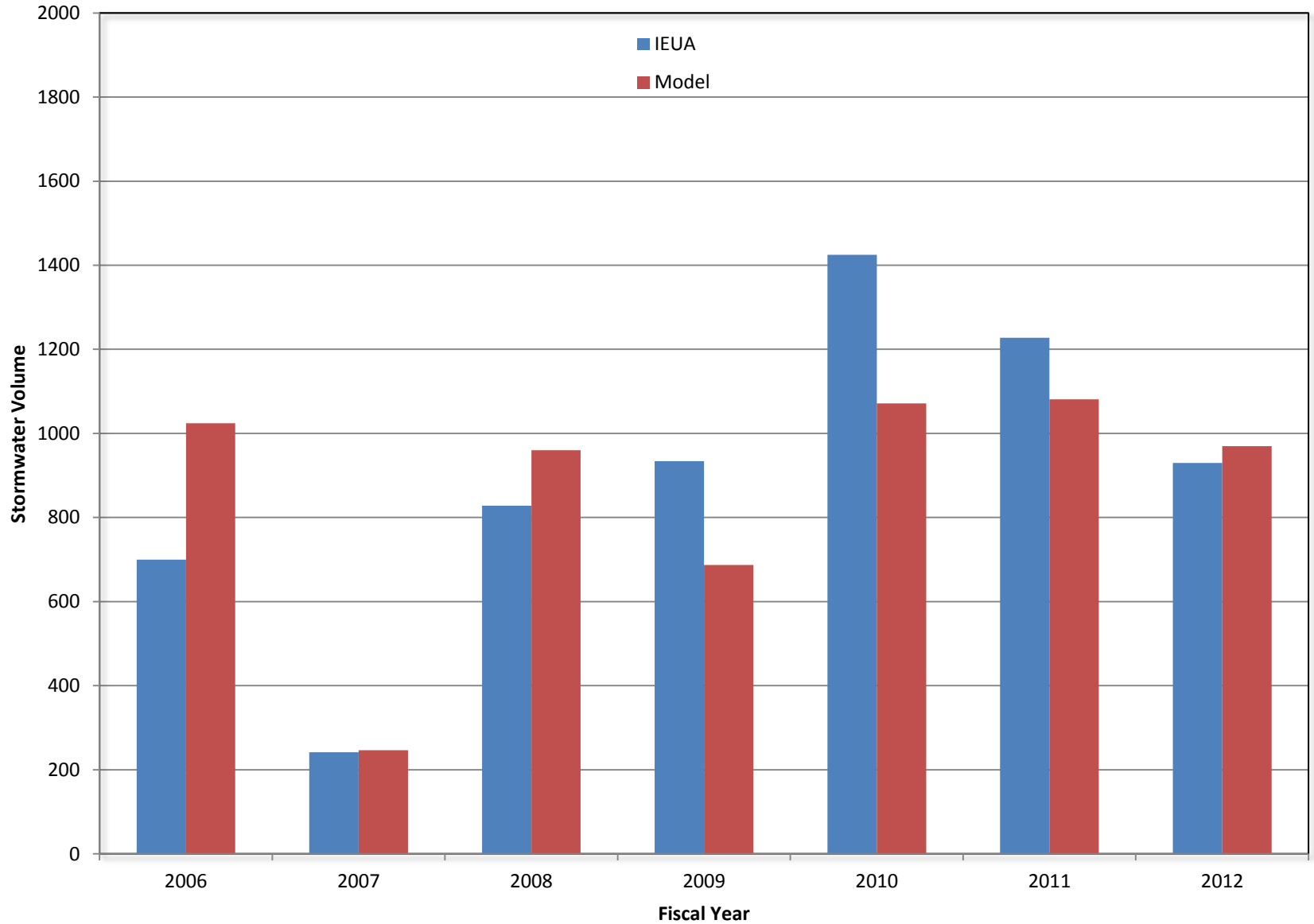
# Comparison Of Model-Calculated Recharge Volume Versus IEUA's Capture Volume

Brooks Basin



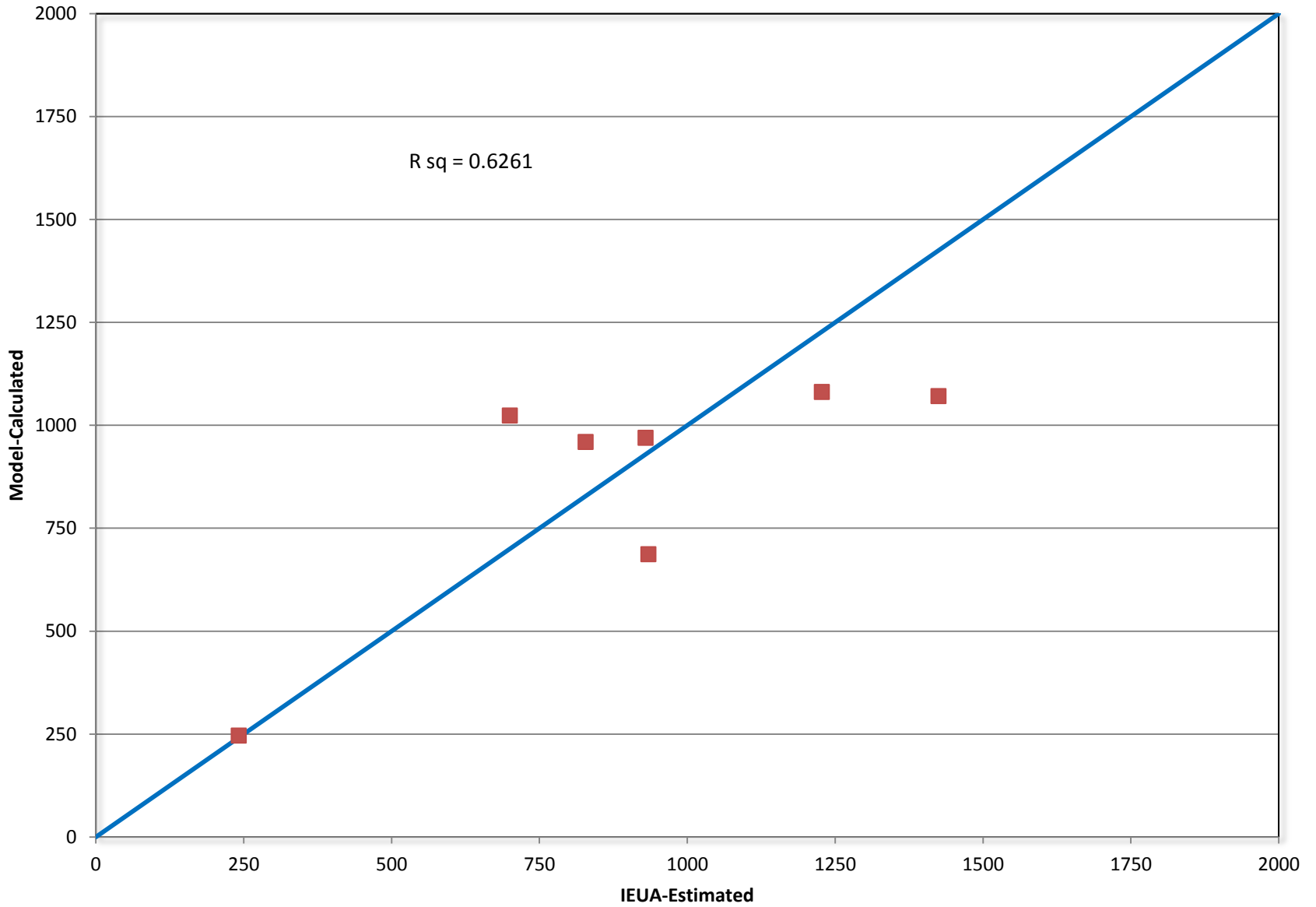
# Comparison Of Model-Calculated Recharge Volume Versus IEUA's Capture Volume

8th and 7th Street Basins



# Comparison Of Model-Calculated Recharge Volume Versus IEUA's Capture Volume

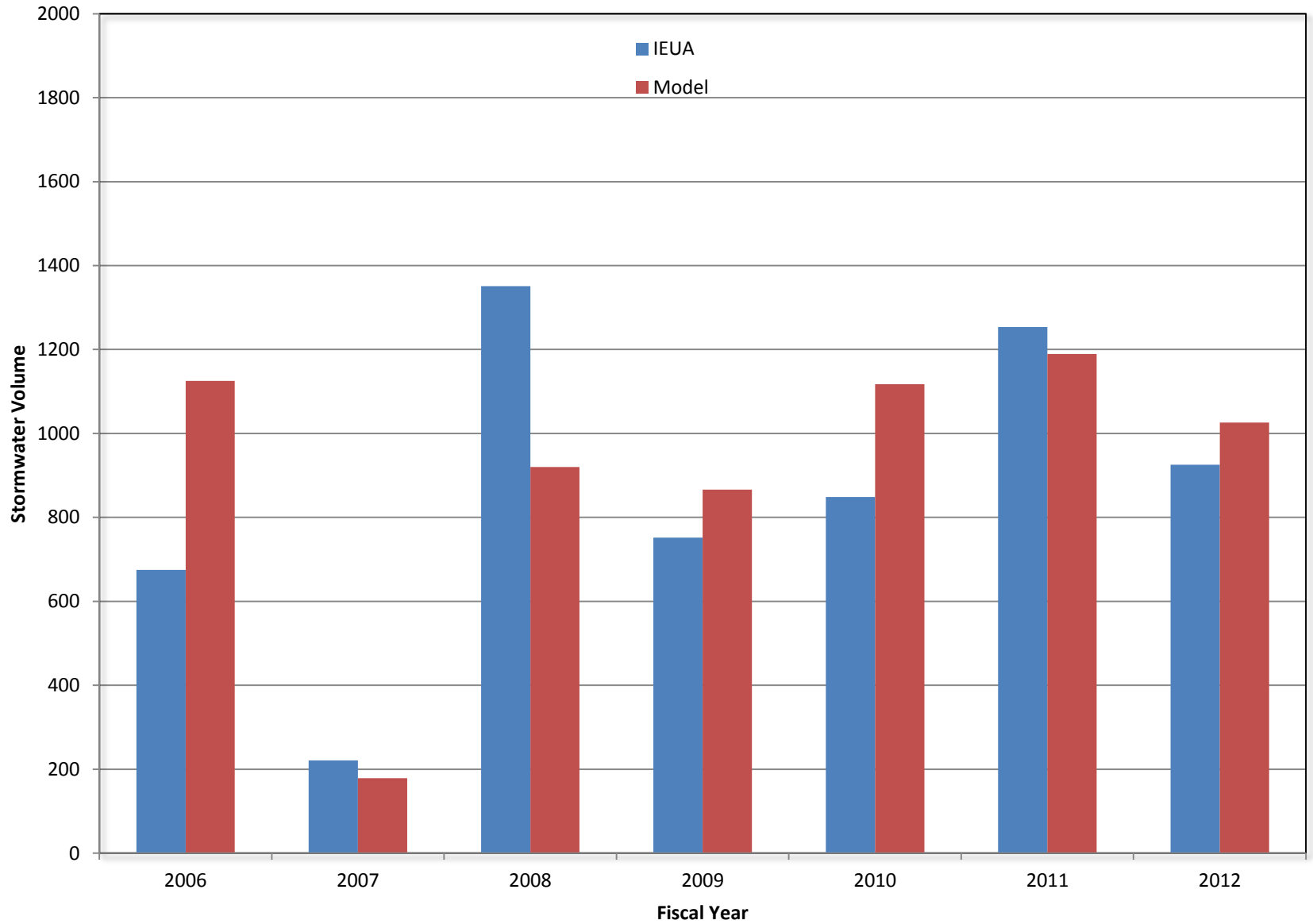
8th and 7th Street Basins





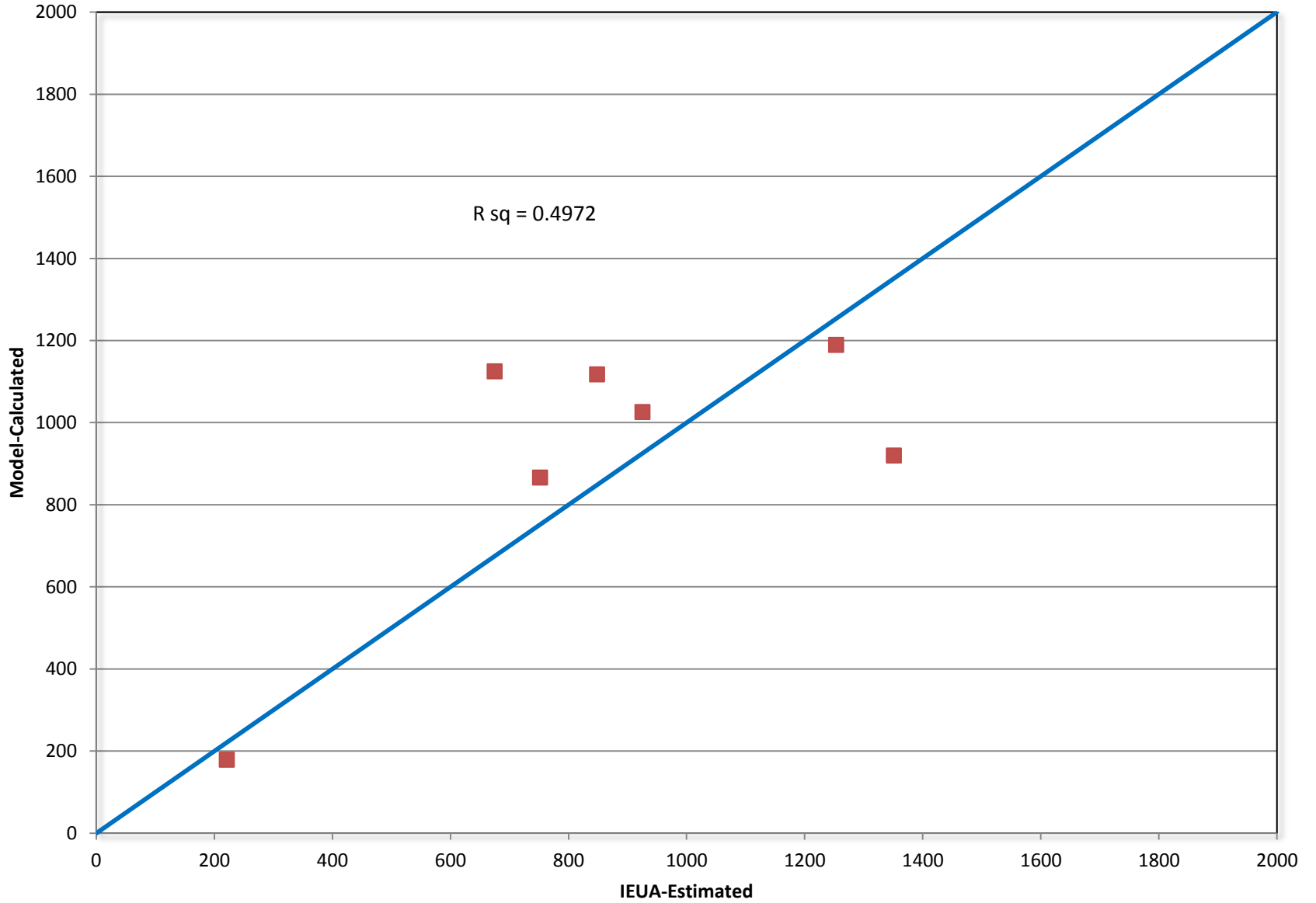
# Comparison Of Model-Calculated Recharge Volume Versus IEUA's Capture Volume

Ely Basins



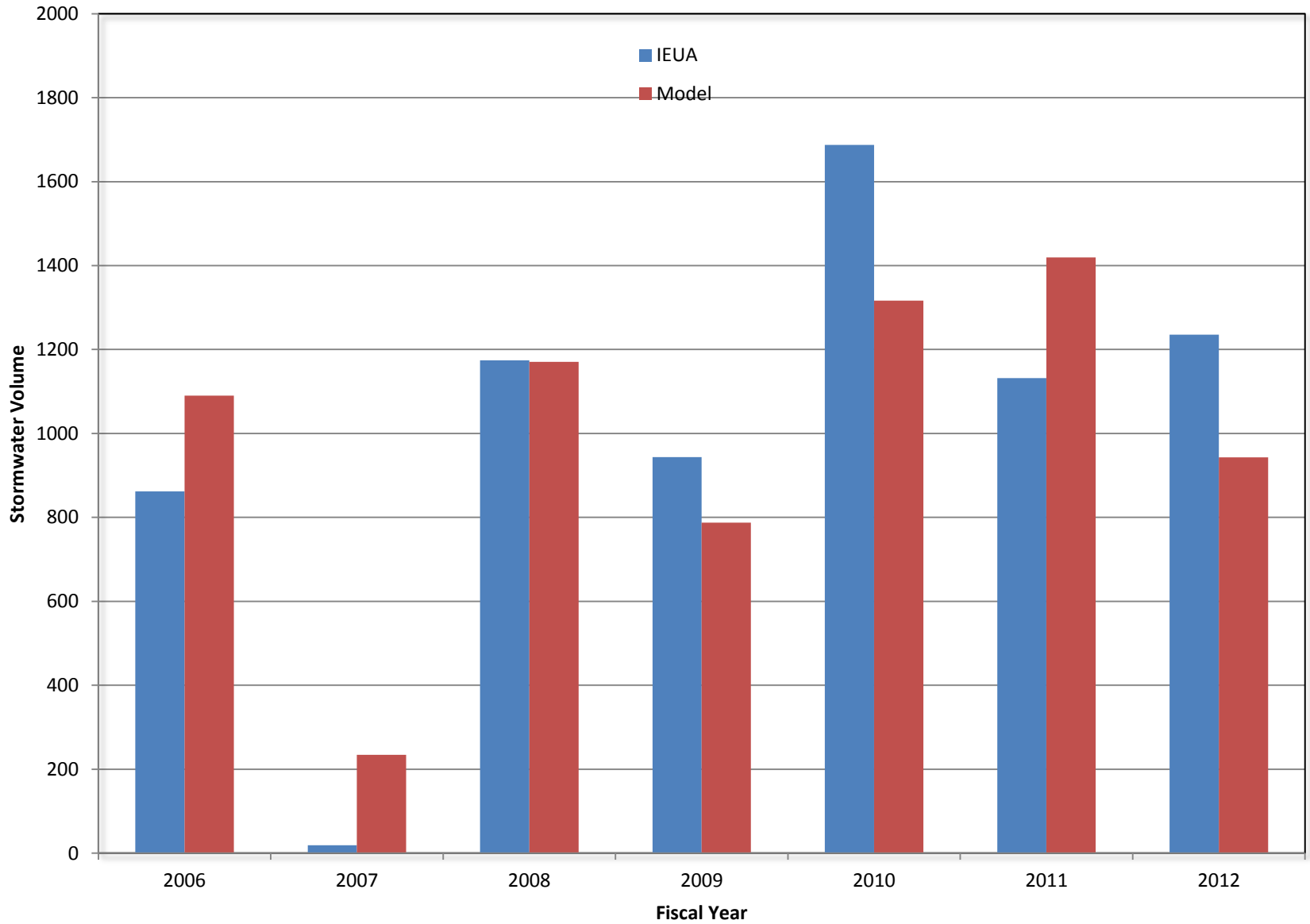
# Comparison Of Model-Calculated Recharge Volume Versus IEUA's Capture Volume

Ely Basins



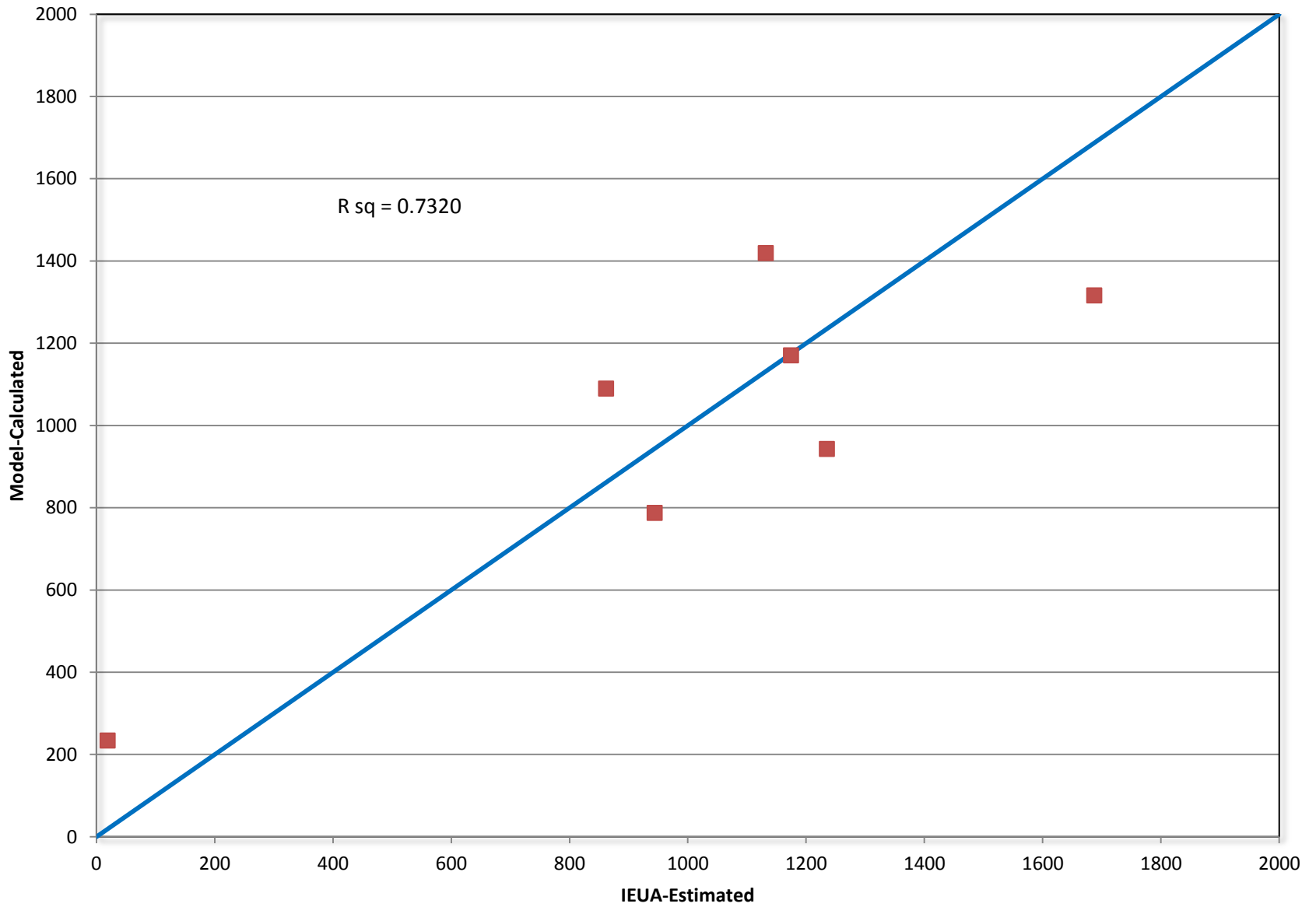
# Comparison Of Model-Calculated Recharge Volume Versus IEUA's Capture Volume

Turner Basins



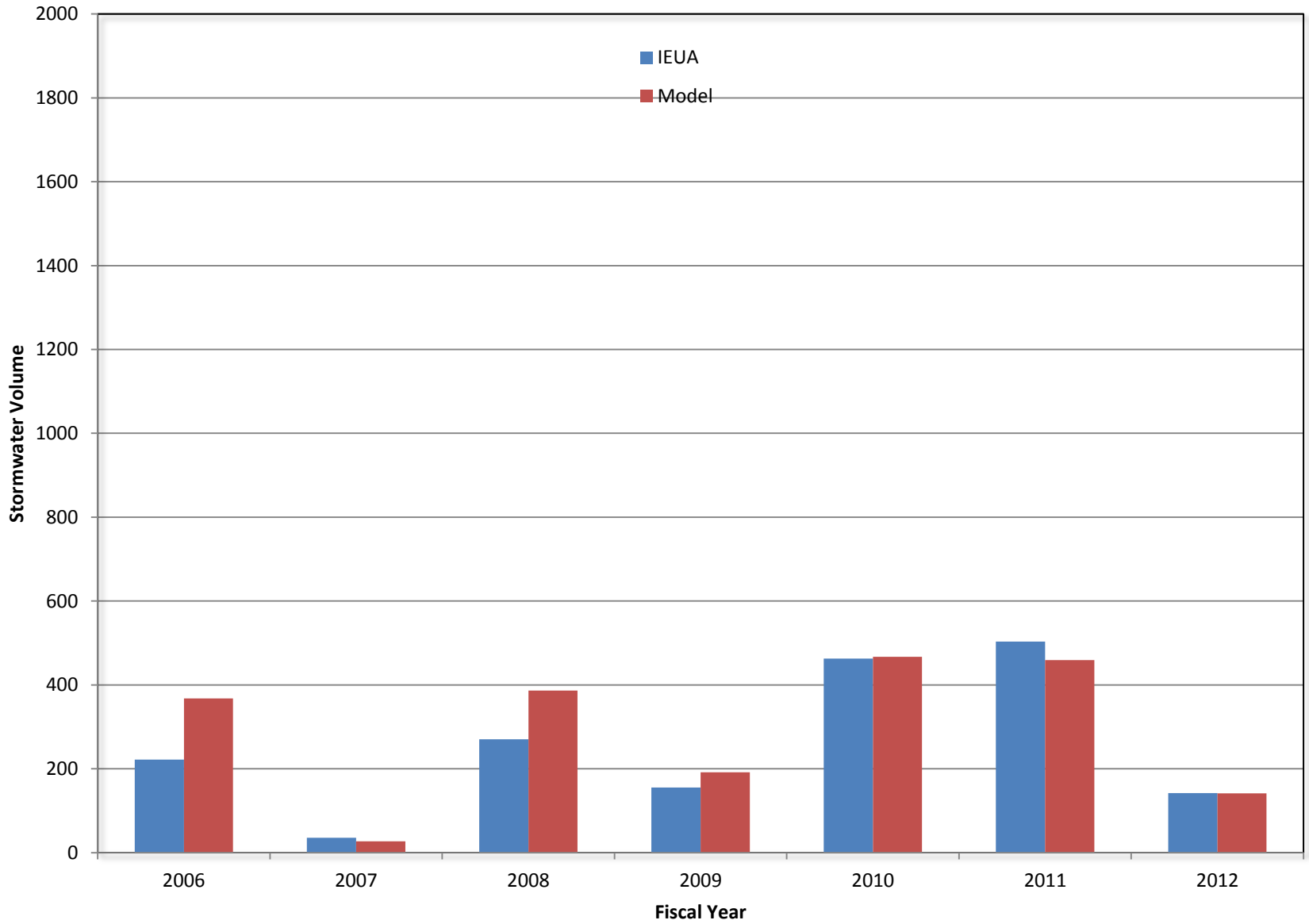
# Comparison Of Model-Calculated Recharge Volume Versus IEUA's Capture Volume

Turner Basins



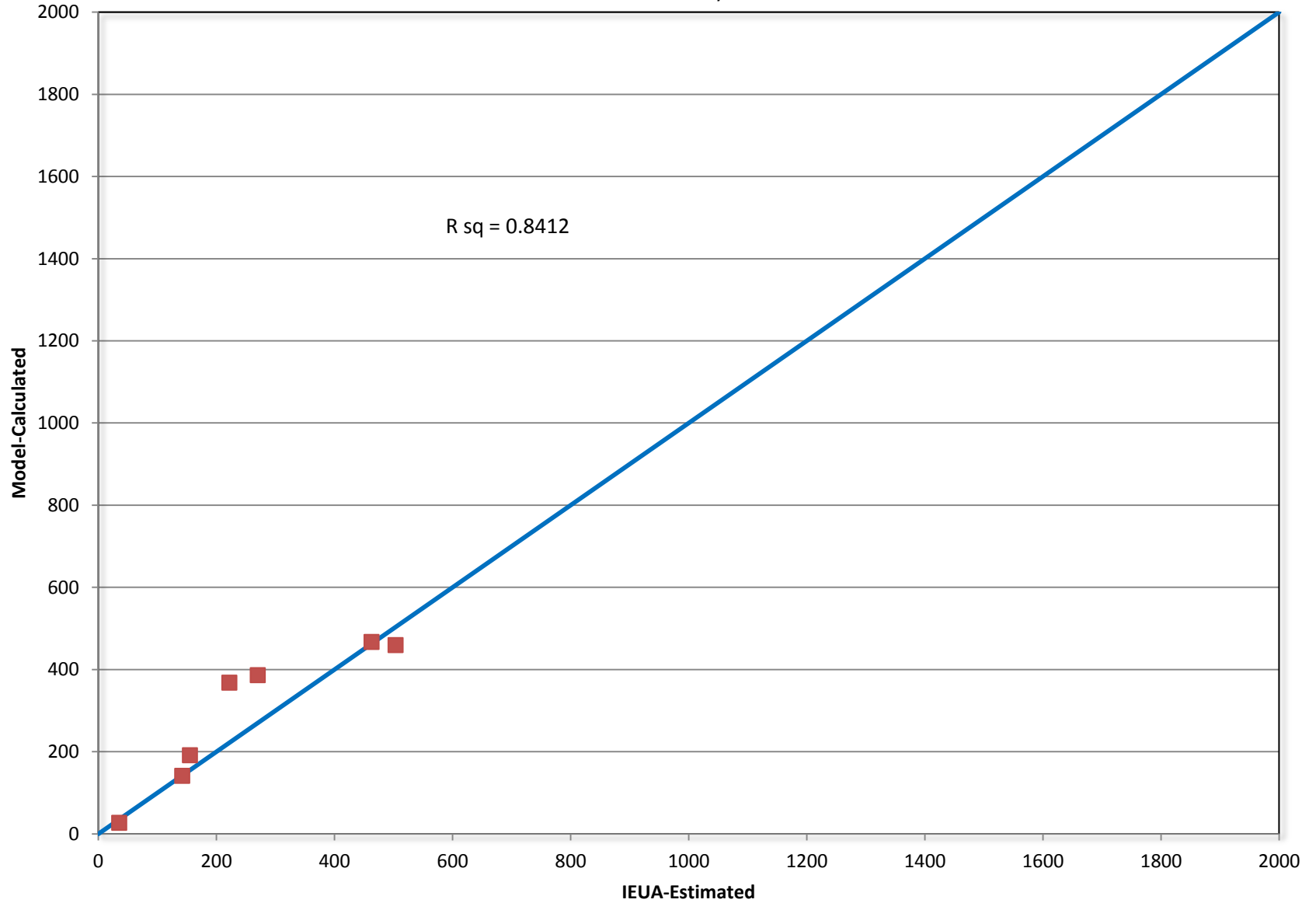
# Comparison Of Model-Calculated Recharge Volume Versus IEUA's Capture Volume

Lower Day Basin



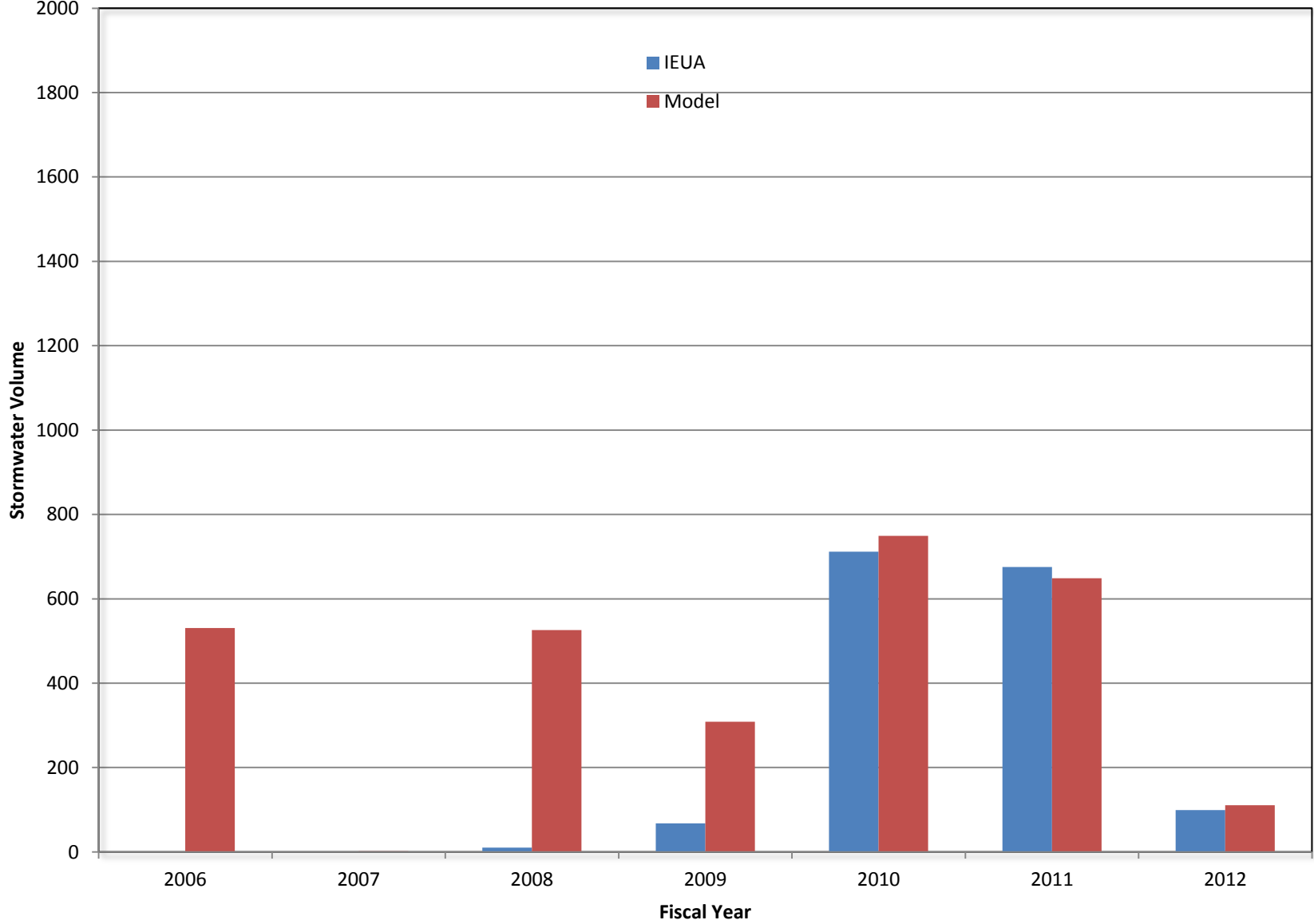
# Comparison Of Model-Calculated Recharge Volume Versus IEUA's Capture Volume

Lower Day Basin



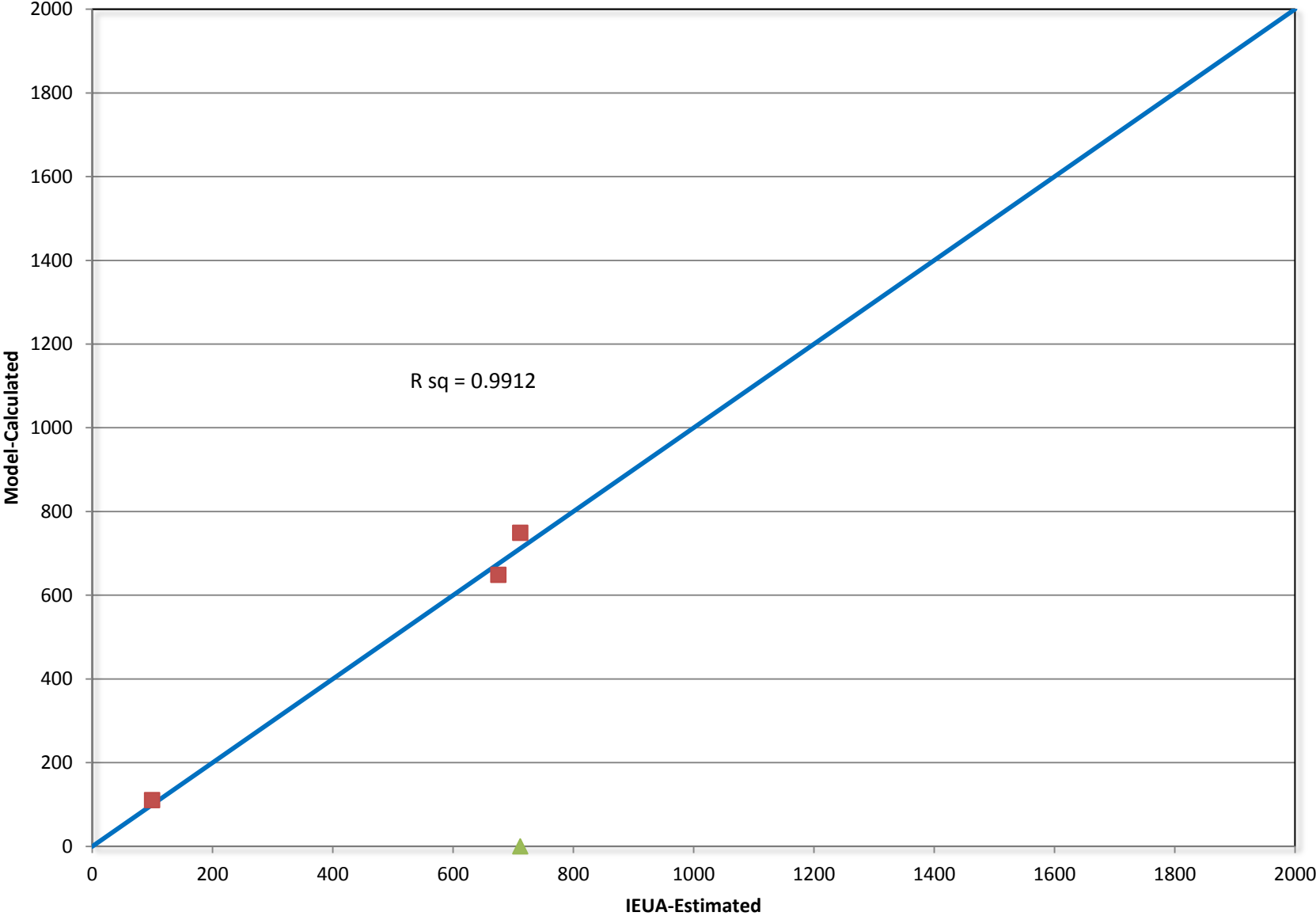
# Comparison Of Model-Calculated Recharge Volume Versus IEUA's Capture Volume

Etiwanda Debis Basin



# Comparison Of Model-Calculated Recharge Volume Versus IEUA's Capture Volume

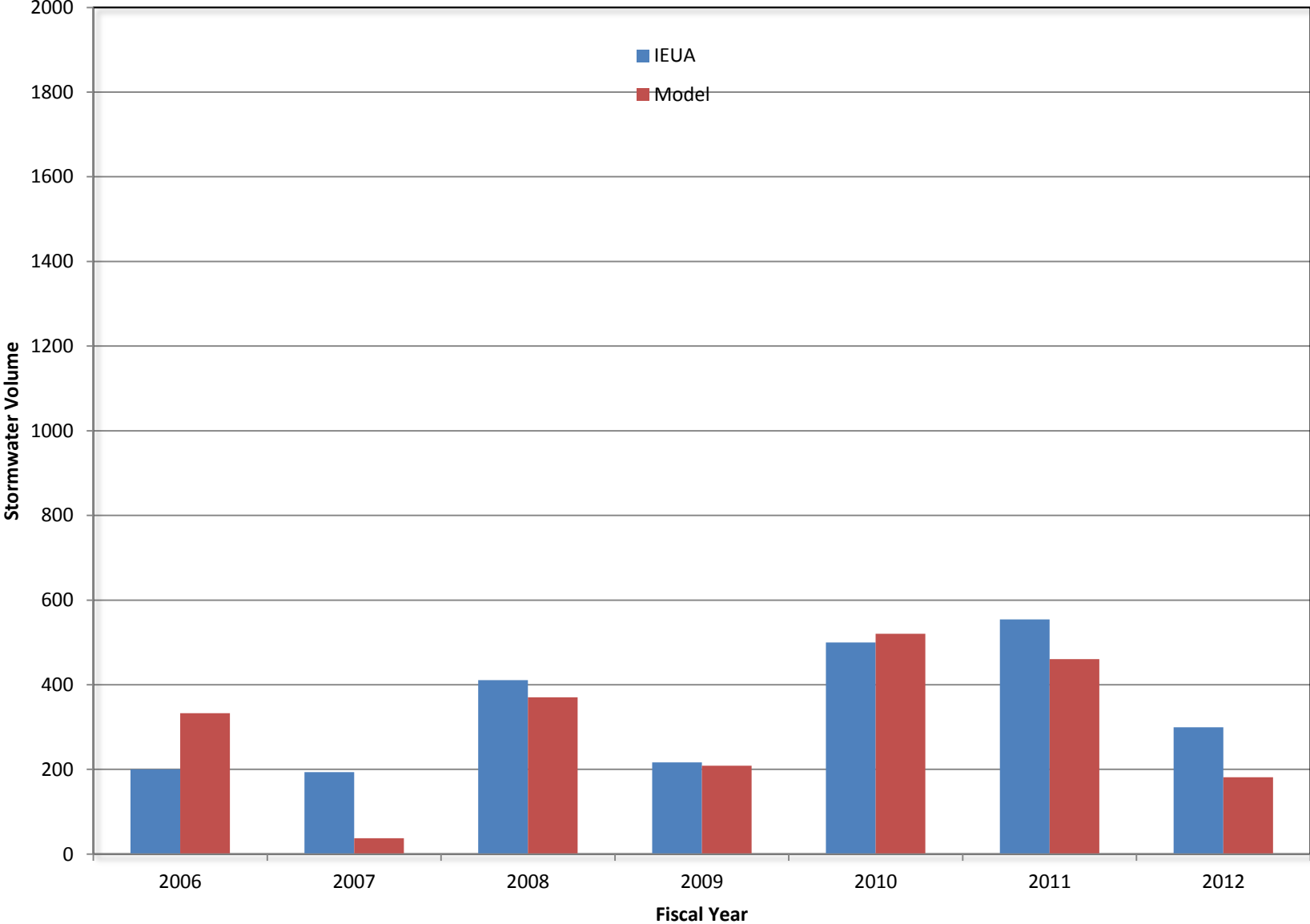
Etiwanda Debis Basin





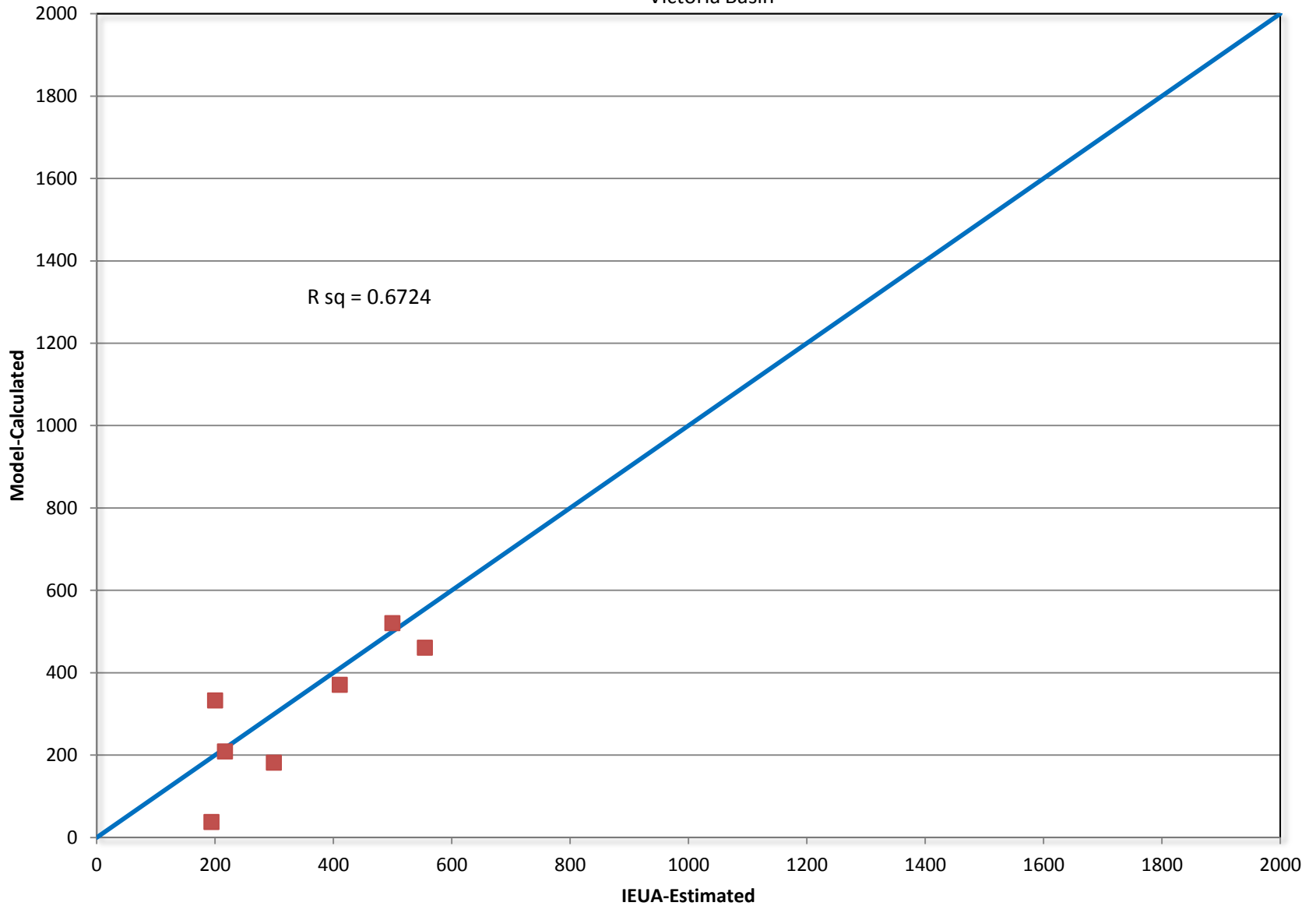
# Comparison Of Model-Calculated Recharge Volume Versus IEUA's Capture Volume

Victoria Basin



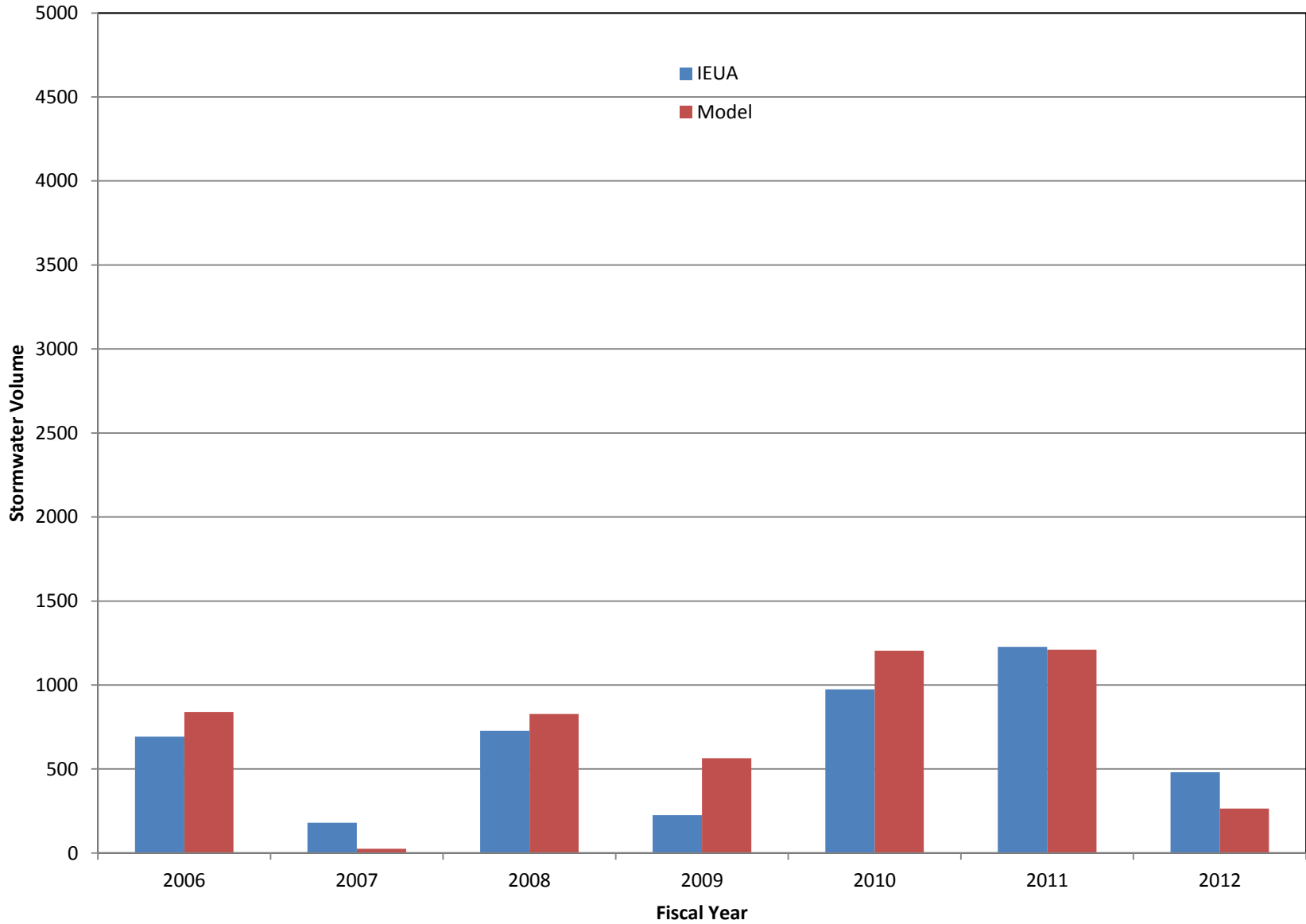
# Comparison Of Model-Calculated Recharge Volume Versus IEUA's Capture Volume

Victoria Basin



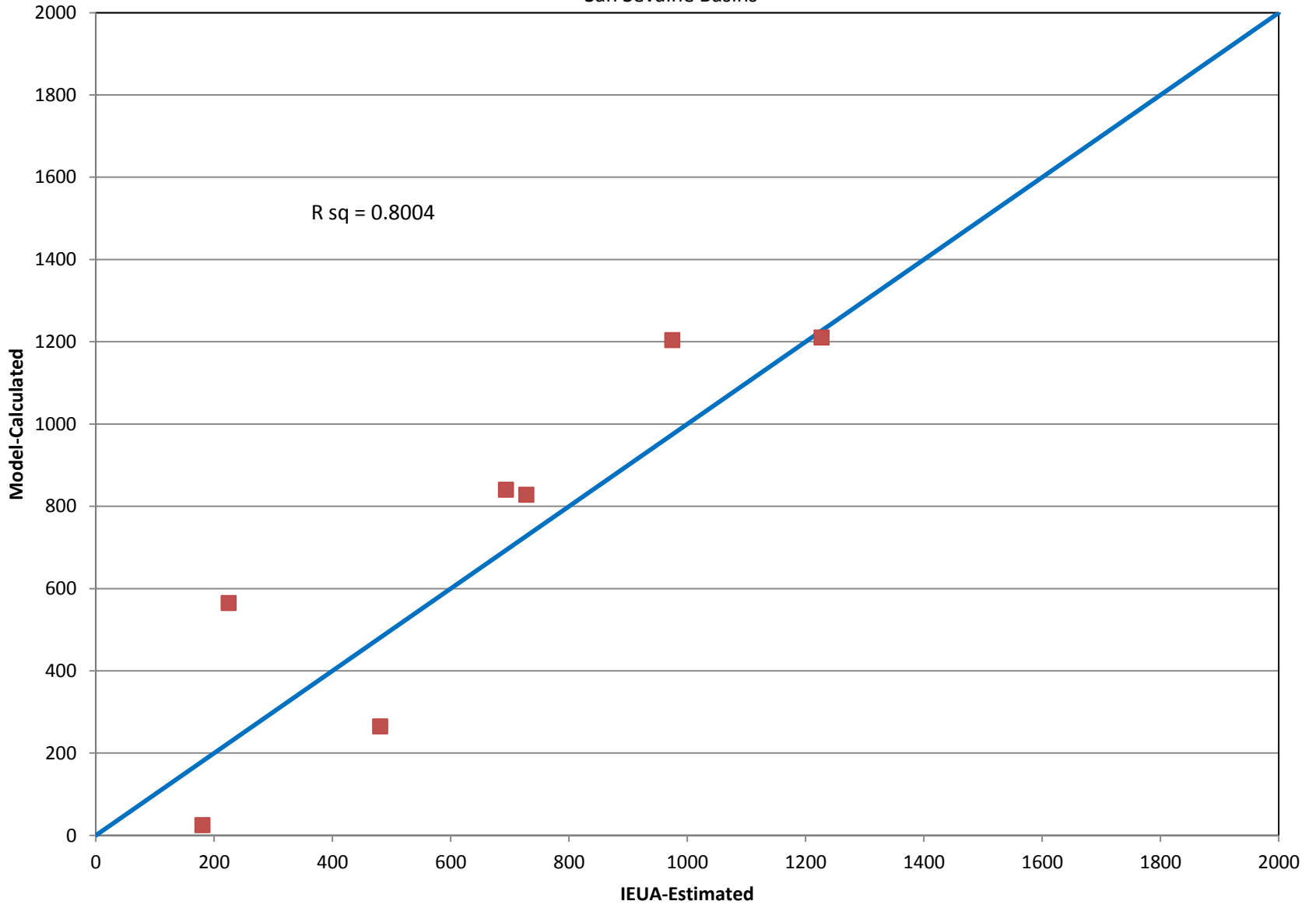
# Comparison Of Model-Calculated Recharge Volume Versus IEUA's Capture Volume

San Sevaine Basins



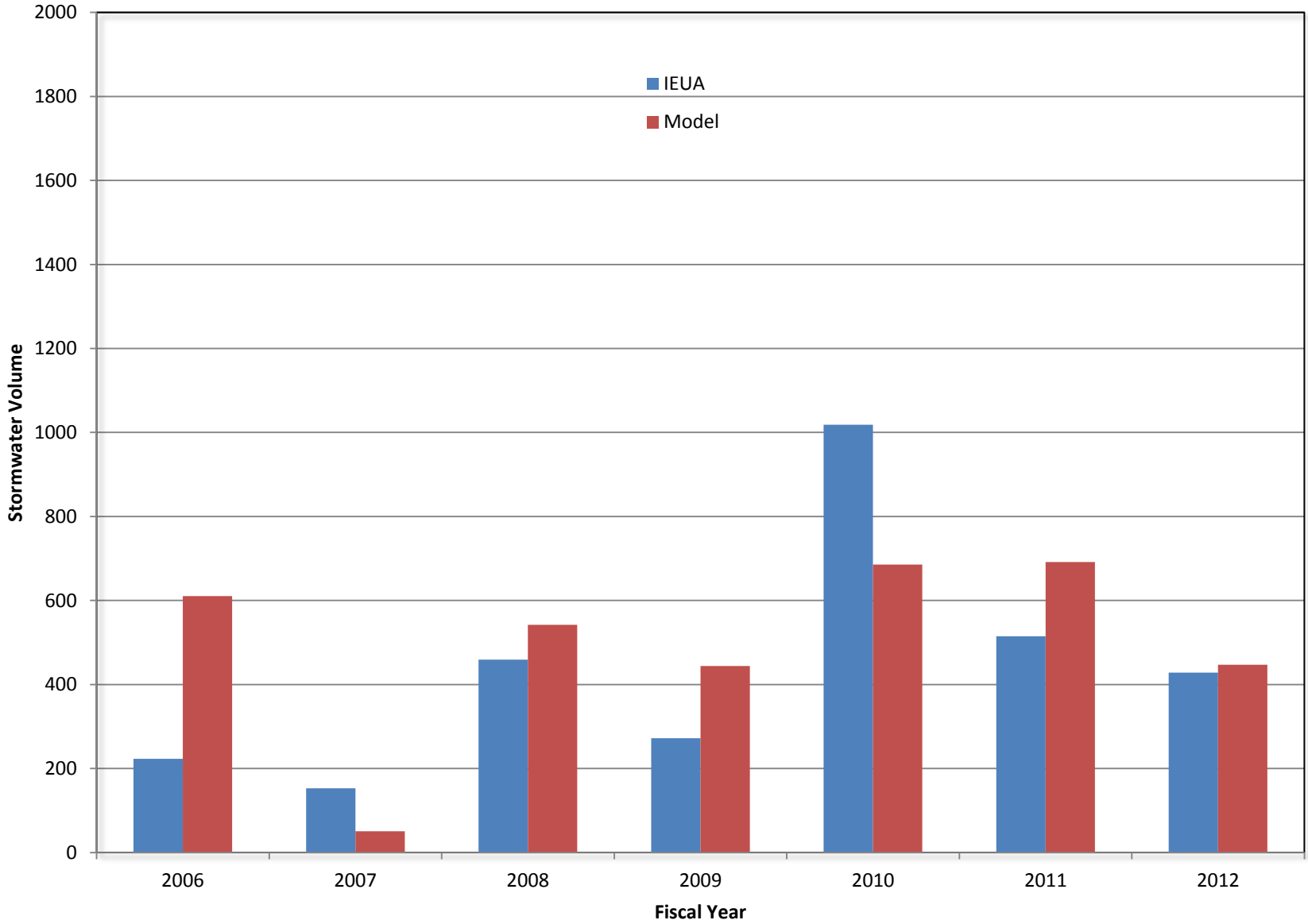
# Comparison Of Model-Calculated Recharge Volume Versus IEUA's Capture Volume

San Sevaine Basins



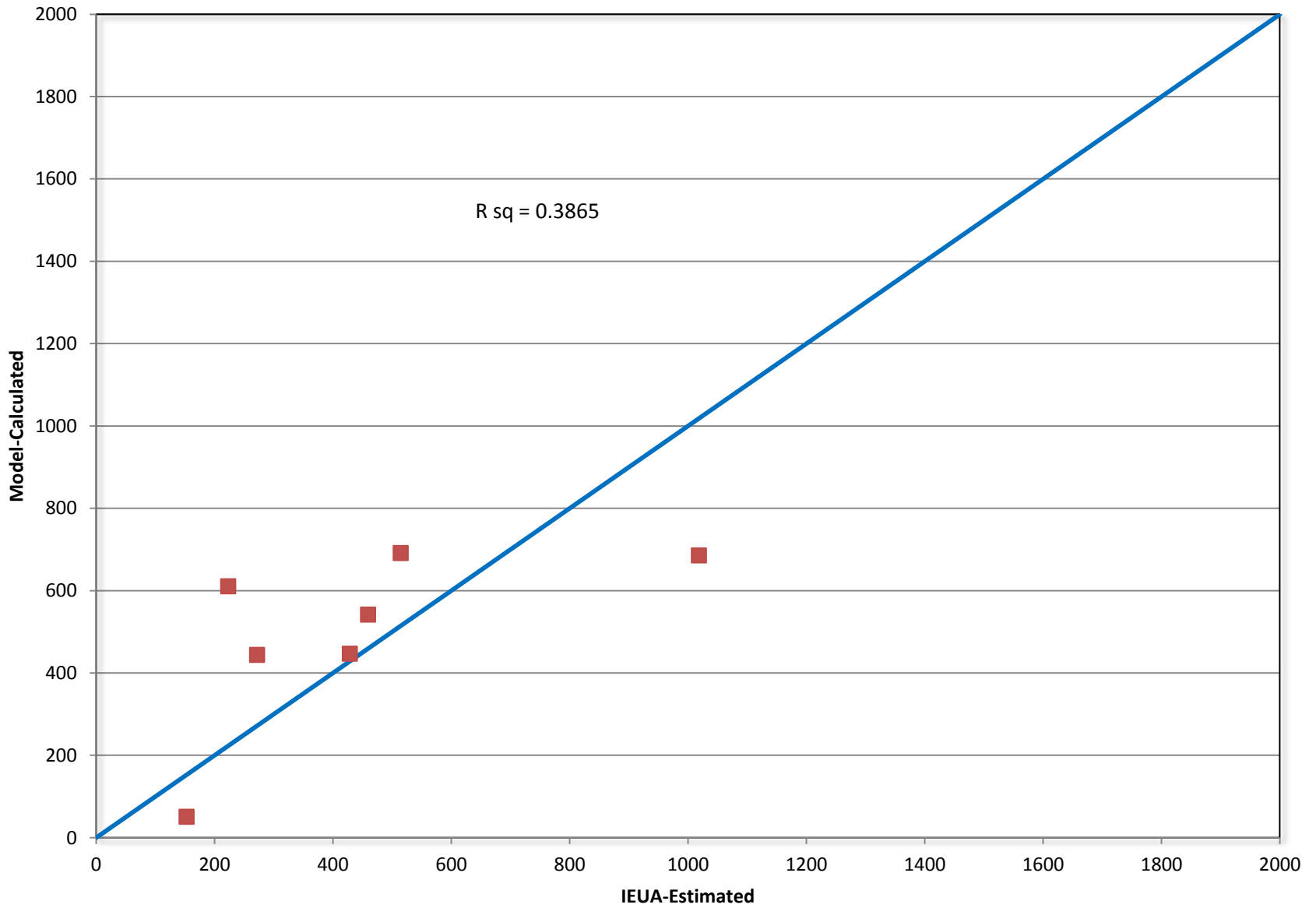
# Comparison Of Model-Calculated Recharge Volume Versus IEUA's Capture Volume

Banana and Hickory Basins



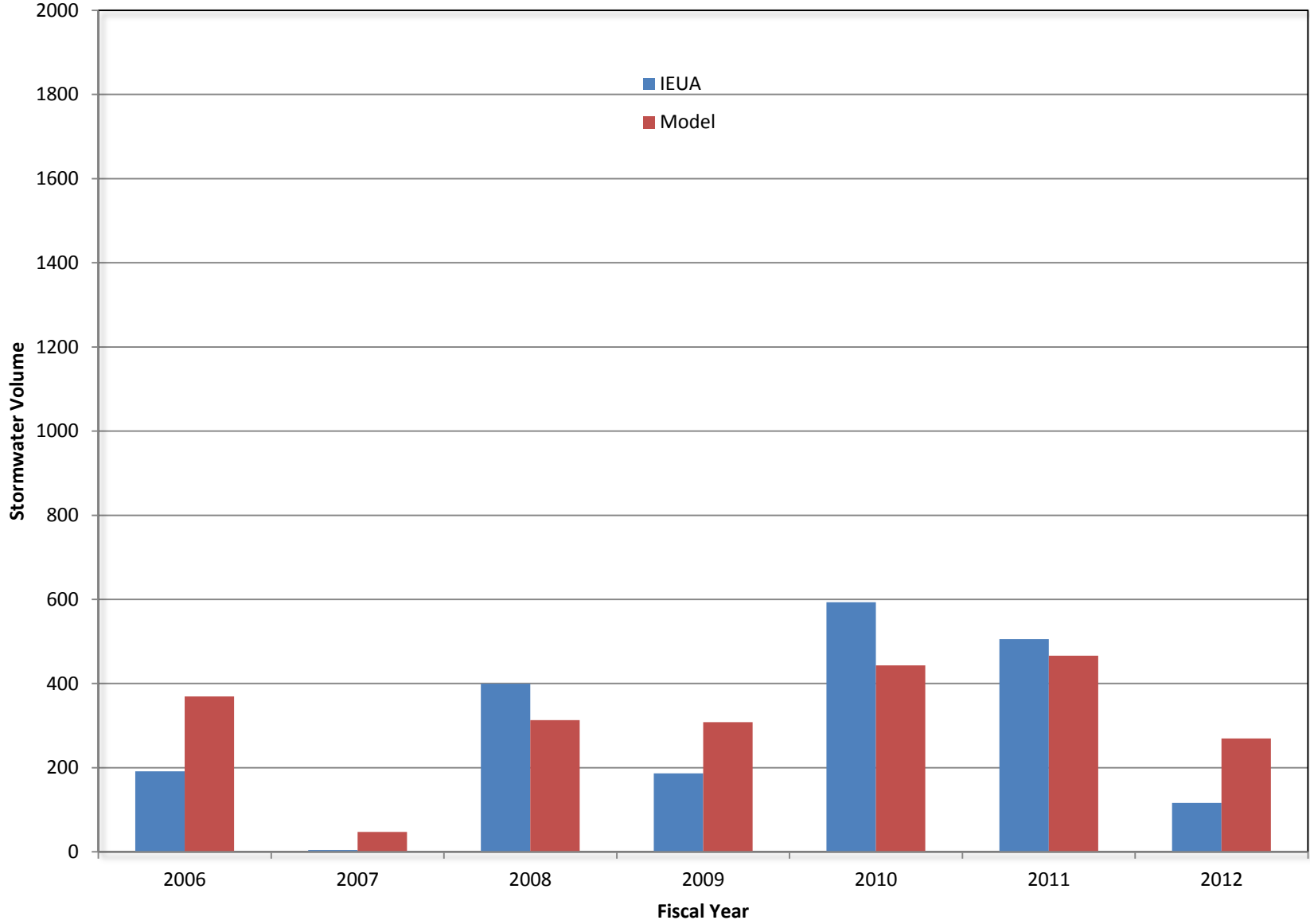
# Comparison Of Model-Calculated Recharge Volume Versus IEUA's Capture Volume

Banana and Hickory Basins



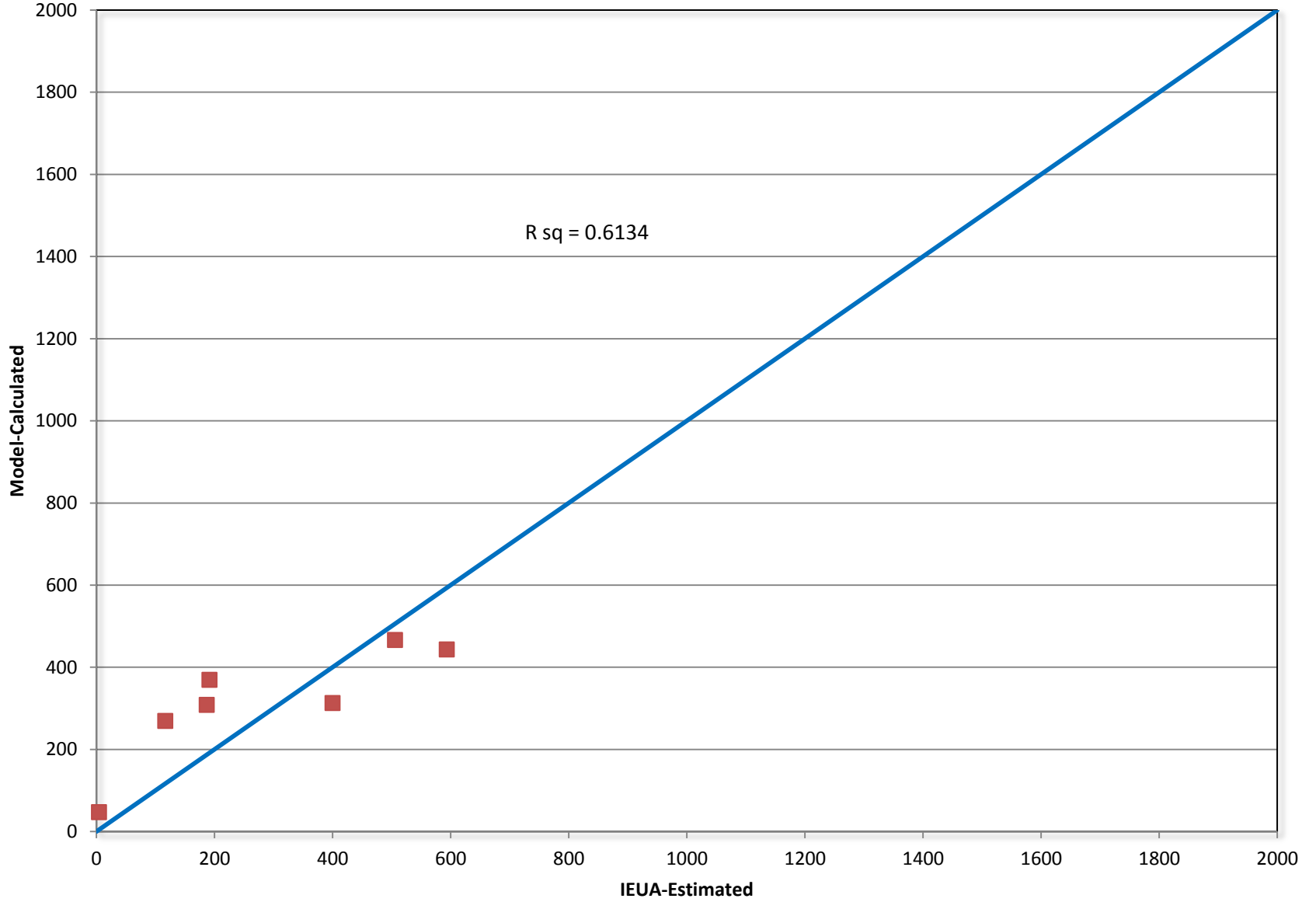
# Comparison Of Model-Calculated Recharge Volume Versus IEUA's Capture Volume

RP3 Basins (3a,3b,4a,4b)



# Comparison Of Model-Calculated Recharge Volume Versus IEUA's Capture Volume

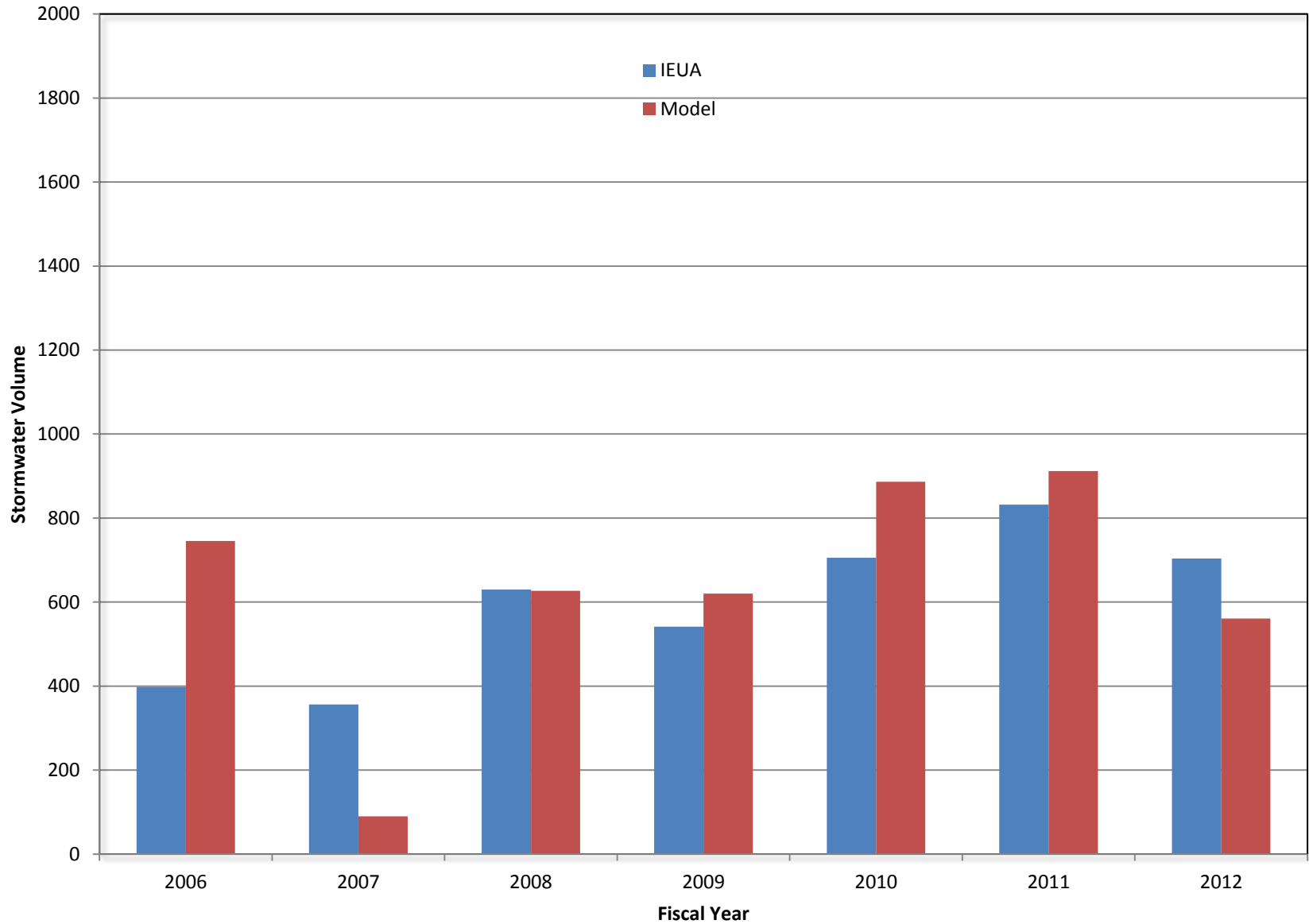
RP3 Basins (3a,3b,4a,4b)





# Comparison Of Model-Calculated Recharge Volume Versus IEUA's Capture Volume

Declez Basin



# Comparison Of Model-Calculated Recharge Volume Versus IEUA's Capture Volume

Declez Basin

